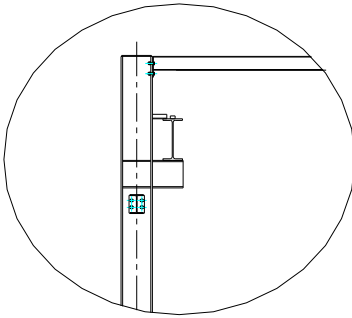


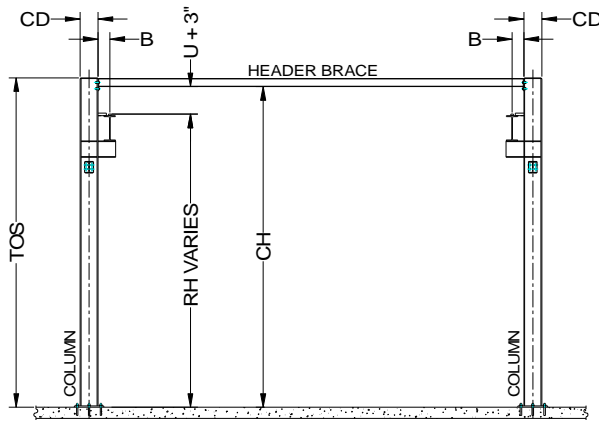


42827 Irwin Drive
 Harrison Twp. MI 48045 USA
 P/ 586-468-0909 F/ 586-468-2711
 E/ info@mccrane.com W/ mccrane.com

DIMENSIONS & WEIGHTS - TYPE FSTM-20000
10-TON CAPACITY FREE STANDING RUNWAY
STRUCTURE FOR MOTORIZED CRANE - 20FT TOS



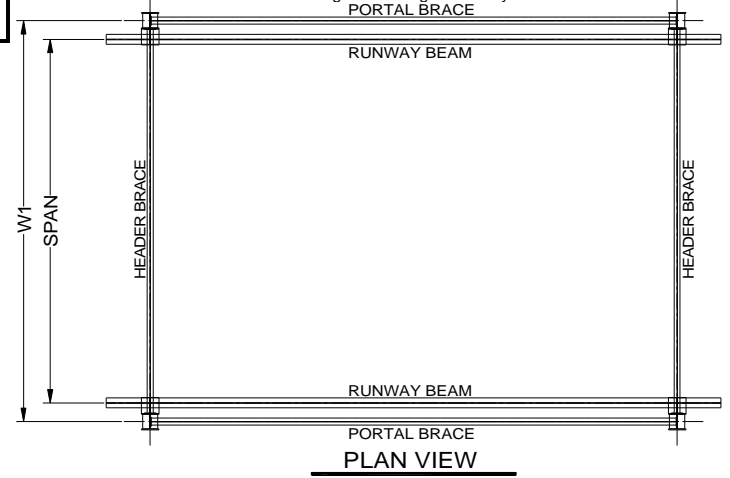
BEAM/COL. DETAIL



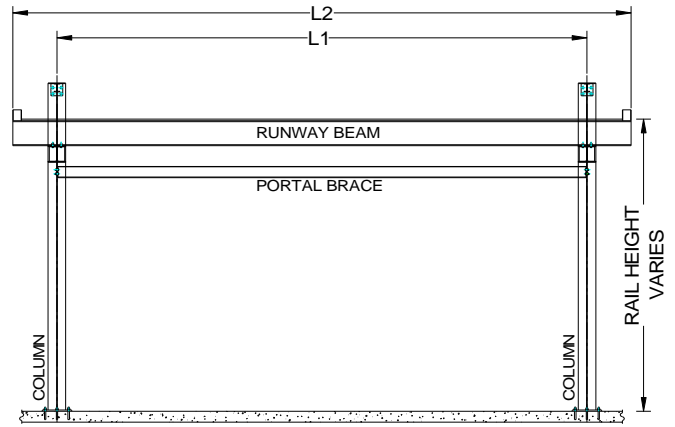
END VIEW

GENERAL NOTES:

- Runway rail is rectangular square bar welded to runway beam. Additional field welding is required at splice joints that overlap beam splices.
- Capacities shown are for One (1) Crane at rated capacity.
- Runway designed for MCC standard crane types: TRSGCH, TRSGWR, TRSGWD, or TRSGWS. Special or customer supplied cranes require review of structure for specific crane design
- For non-standard lengths, widths, or heights; use next larger structure and order with exact dimensions required.
- Structure kit includes: ACAD system installation drawing specific for order, all structural steel work per attached concept drawing, bolting hardware, anchoring hardware for 6" minimum floor thickness, and gray primer paint finish.
- Structure deflection is approximately 1/2" maximum in all directions. Please contact MCC if additional deflection control is required.
- Runway rail height "RH" is calculated for each structure for specific crane to be used. Formula: Rail Height RH = Clear Height (CH) - Crane Height (U)-3" clearance
- Minimum 6" reinforced concrete (min.4000psi) floor required for all structures.
- Base runway cell is a braced cell. Additional cells can be unbraced cell. Every other cell must be a braced cell. See "Cell Configuration Diagram" for layout scenarios.



PLAN VIEW



LONGITUDINAL VIEW

10-TON CAPACITY / 20 FT (TOS) SYSTEM HEIGHT

| ITEM # | SYSTEM I.D. NUMBER | LENGTH L1 (FT) | WIDTH W1 (FT) | HEIGHT TOS (FT) | HEIGHT CH (FT) | SPAN (FT) | LENGTH L2 (FT) | HEIGHT RH (FT) | WIDTH CD (IN) | WIDTH B (IN) | SYSTEM WT. (LBS) | # COL'S. TOTAL |
|--------|---------------------|----------------|---------------|-----------------|----------------|-----------|----------------|----------------|---------------|--------------|------------------|----------------|
| 1 | FSTM-20000-20-20-20 | 20.00 | 20.00 | 20.00 | 19.50 | 18.00 | 25.00 | CH-U-3" | 12.00 | 6.00 | 11,492 | 4 |
| 2 | FSTM-20000-25-20-20 | 25.00 | 20.00 | 20.00 | 19.50 | 18.00 | 30.00 | CH-U-3" | 12.00 | 6.00 | 13,215 | 4 |
| 3 | FSTM-20000-30-20-20 | 30.00 | 20.00 | 20.00 | 19.50 | 18.00 | 35.00 | CH-U-3" | 12.00 | 6.00 | 15,610 | 4 |
| 4 | FSTM-20000-20-25-20 | 20.00 | 25.00 | 20.00 | 19.33 | 23.00 | 25.00 | CH-U-3" | 12.00 | 6.00 | 11,807 | 4 |
| 5 | FSTM-20000-25-25-20 | 25.00 | 25.00 | 20.00 | 19.33 | 23.00 | 30.00 | CH-U-3" | 12.00 | 6.00 | 13,908 | 4 |
| 6 | FSTM-20000-30-25-20 | 30.00 | 25.00 | 20.00 | 19.33 | 23.00 | 35.00 | CH-U-3" | 12.00 | 6.00 | 15,925 | 4 |
| 7 | FSTM-20000-20-30-20 | 20.00 | 30.00 | 20.00 | 19.33 | 28.00 | 25.00 | CH-U-3" | 12.00 | 6.00 | 13,261 | 4 |
| 8 | FSTM-20000-25-30-20 | 25.00 | 30.00 | 20.00 | 19.33 | 28.00 | 30.00 | CH-U-3" | 12.00 | 6.00 | 15,100 | 4 |
| 9 | FSTM-20000-30-30-20 | 30.00 | 30.00 | 20.00 | 19.33 | 28.00 | 35.00 | CH-U-3" | 12.00 | 6.00 | 17,117 | 4 |
| 10 | FSTM-20000-20-35-20 | 20.00 | 35.00 | 20.00 | 19.17 | 33.00 | 25.00 | CH-U-3" | 12.00 | 6.00 | 13,660 | 4 |
| 11 | FSTM-20000-25-35-20 | 25.00 | 35.00 | 20.00 | 19.17 | 33.00 | 30.00 | CH-U-3" | 12.00 | 6.00 | 15,499 | 4 |
| 12 | FSTM-20000-30-35-20 | 30.00 | 35.00 | 20.00 | 19.17 | 33.00 | 35.00 | CH-U-3" | 12.00 | 6.00 | 17,589 | 4 |
| 13 | FSTM-20000-20-40-20 | 20.00 | 40.00 | 20.00 | 19.00 | 38.00 | 25.00 | CH-U-3" | 12.00 | 6.00 | 14,269 | 4 |
| 14 | FSTM-20000-25-40-20 | 25.00 | 40.00 | 20.00 | 19.00 | 38.00 | 30.00 | CH-U-3" | 12.00 | 6.00 | 16,108 | 4 |
| 15 | FSTM-20000-30-40-20 | 30.00 | 40.00 | 20.00 | 19.00 | 38.00 | 35.00 | CH-U-3" | 12.00 | 6.00 | 18,860 | 4 |
| 16 | FSTM-20000-20-45-20 | 20.00 | 45.00 | 20.00 | 18.83 | 42.83 | 25.00 | CH-U-3" | 12.00 | 7.00 | 14,962 | 4 |
| 17 | FSTM-20000-25-45-20 | 25.00 | 45.00 | 20.00 | 18.83 | 42.83 | 30.00 | CH-U-3" | 12.00 | 7.00 | 16,801 | 4 |
| 18 | FSTM-20000-30-45-20 | 30.00 | 45.00 | 20.00 | 18.83 | 42.83 | 35.00 | CH-U-3" | 12.00 | 7.00 | 19,553 | 4 |
| 19 | FSTM-20000-20-50-20 | 20.00 | 50.00 | 20.00 | 18.67 | 47.83 | 25.00 | CH-U-3" | 12.00 | 7.00 | 15,949 | 4 |
| 20 | FSTM-20000-25-50-20 | 25.00 | 50.00 | 20.00 | 18.67 | 47.83 | 30.00 | CH-U-3" | 12.00 | 7.00 | 17,788 | 4 |
| 21 | FSTM-20000-30-50-20 | 30.00 | 50.00 | 20.00 | 18.67 | 47.83 | 35.00 | CH-U-3" | 12.00 | 7.00 | 20,540 | 4 |

ADDTL. CELL LENGTH

| ADDTL. LGTH (FT) | ADDTL. WT. (LBS) | ADDTL. COL'S. (EA) |
|------------------|------------------|--------------------|
| 20.00 | 5,647 | 2 |
| 25.00 | 6,919 | 2 |
| 30.00 | 8,589 | 2 |
| 20.00 | 5,805 | 2 |
| 25.00 | 7,391 | 2 |
| 30.00 | 8,747 | 2 |
| 20.00 | 6,298 | 2 |
| 25.00 | 7,675 | 2 |
| 30.00 | 9,030 | 2 |
| 20.00 | 6,498 | 2 |
| 25.00 | 7,874 | 2 |
| 30.00 | 9,293 | 2 |
| 20.00 | 6,802 | 2 |
| 25.00 | 8,179 | 2 |
| 30.00 | 10,164 | 2 |
| 20.00 | 7,149 | 2 |
| 25.00 | 8,525 | 2 |
| 30.00 | 10,511 | 2 |
| 20.00 | 7,642 | 2 |
| 25.00 | 9,019 | 2 |
| 30.00 | 11,004 | 2 |