

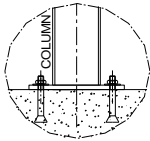
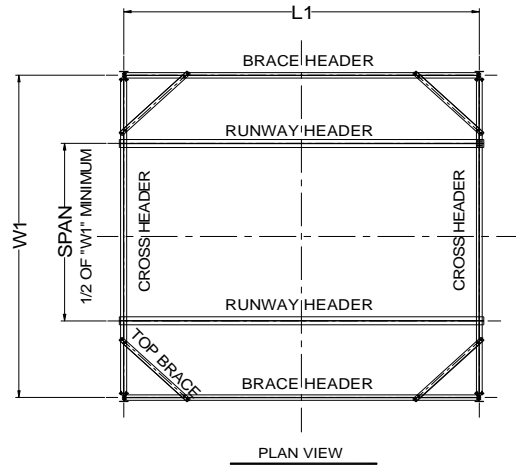


42827 Irwin Drive
 Harrison Twp. MI 48045 USA
 P/ 586-468-0909 F/ 586-468-2711
 E/ info@mccrane.com W/ mccrane.com

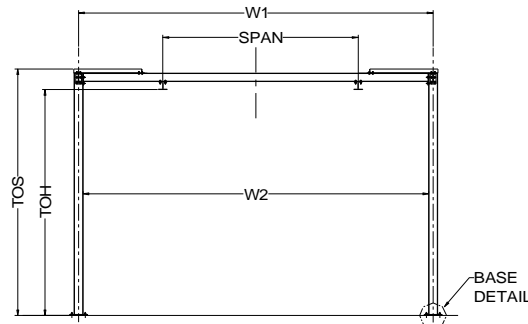
DIMENSIONS & WEIGHTS - TYPE FSET
2,000# CAPACITY FREE STANDING RUNWAY
STRUCTURE FOR HAND OPERATED CRANE

GENERAL NOTES:

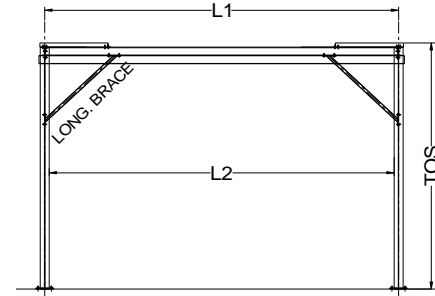
- System capacity shown is for the sum of live loads and dead loads suspended from bridge. Structures listed are for hand operated enclosed track crane or monorail systems only.
- Capacities shown are for One-(2) runway rail or One (1) monorail system only.
- Crane spans for runway systems must equal 1/2 the system width or greater (within limits of structure width). Loads must be kept within footprint of structure.
- For non-standard lengths, widths, or heights; use next larger structure and order with exact dimensions required.
- Structure kit include: ACAD system installation drawing specific for order, all structural steel work per attached concept drawing, bolting hardware, anchoring hardware for 8" minimum floor thickness, and gray primer paint finish.



BASE DETAIL



END VIEW



LONGITUDINAL VIEW

2,000# CAPACITY / 15 FT (TOS) SYSTEM HEIGHT										2,000# CAPACITY / 20 FT (TOS) SYSTEM HEIGHT									
ITEM #	SYSTEM I.D. NUMBER	LENGTH L1 (FT)	WIDTH W1 (FT)	HEIGHT TOS (FT)	HEIGHT TOH (FT)	SYSTEM WT. (LBS)	LENGTH L2 (FT)	WIDTH W2 (FT)	# COL'S. TOTAL	ITEM #	SYSTEM I.D. NUMBER	LENGTH L1 (FT)	WIDTH W1 (FT)	HEIGHT TOS (FT)	HEIGHT TOH (FT)	SYSTEM WT. (LBS)	LENGTH L2 (FT)	WIDTH W2 (FT)	# COL'S. TOTAL
1	FSET-2000-09-10-15	9.00	10.00	15.00	13.75	2023	8.50	9.50	4	31	FSET-2000-09-10-20	9.00	10.00	20.00	18.75	3096	8.33	9.33	4
2	FSET-2000-19-10-15	19.00	10.00	15.00	13.75	2623	18.50	9.50	4	32	FSET-2000-19-10-20	19.00	10.00	20.00	18.75	3696	18.33	9.33	4
3	FSET-2000-29-10-15	29.00	10.00	15.00	13.58	3571	28.50	9.50	4	33	FSET-2000-29-10-20	29.00	10.00	20.00	18.58	4644	28.33	9.33	4
4	FSET-2000-39-10-15	39.00	10.00	15.00	13.75	4655	38.50	9.50	6	34	FSET-2000-39-10-20	39.00	10.00	20.00	18.75	6255	38.33	9.33	6
5	FSET-2000-49-10-15	49.00	10.00	15.00	13.58	5843	48.50	9.50	6	35	FSET-2000-49-10-20	49.00	10.00	20.00	18.58	7443	48.33	9.33	6
6	FSET-2000-59-10-15	59.00	10.00	15.00	13.58	6563	58.50	9.50	6	36	FSET-2000-59-10-20	59.00	10.00	20.00	18.58	8163	58.33	9.33	6
7	FSET-2000-69-10-15	69.00	10.00	15.00	13.58	8115	68.50	9.50	8	37	FSET-2000-69-10-20	69.00	10.00	20.00	18.58	10242	68.33	9.33	8
8	FSET-2000-79-10-15	79.00	10.00	15.00	13.58	8835	78.50	9.50	8	38	FSET-2000-79-10-20	79.00	10.00	20.00	18.58	10962	78.33	9.33	8
9	FSET-2000-89-10-15	89.00	10.00	15.00	13.58	9555	88.50	9.50	8	39	FSET-2000-89-10-20	89.00	10.00	20.00	18.58	11682	88.33	9.33	8
10	FSET-2000-99-10-15	99.00	10.00	15.00	13.58	11107	98.50	9.50	10	40	FSET-2000-99-10-20	99.00	10.00	20.00	18.58	13761	98.33	9.33	10
11	FSET-2000-09-20-15	9.00	20.00	15.00	13.75	2443	8.50	19.50	4	41	FSET-2000-09-20-20	9.00	20.00	20.00	18.75	3463	8.33	19.33	4
12	FSET-2000-19-20-15	19.00	20.00	15.00	13.75	3043	18.50	19.50	4	42	FSET-2000-19-20-20	19.00	20.00	20.00	18.75	4063	18.33	19.33	4
13	FSET-2000-29-20-15	29.00	20.00	15.00	13.58	3991	28.50	19.50	4	43	FSET-2000-29-20-20	29.00	20.00	20.00	18.58	5011	28.33	19.33	4
14	FSET-2000-39-20-15	39.00	20.00	15.00	13.75	5285	38.50	19.50	6	44	FSET-2000-39-20-20	39.00	20.00	20.00	18.75	6815	38.33	19.33	6
15	FSET-2000-49-20-15	49.00	20.00	15.00	13.58	6473	48.50	19.50	6	45	FSET-2000-49-20-20	49.00	20.00	20.00	18.58	8003	48.33	19.33	6
16	FSET-2000-59-20-15	59.00	20.00	15.00	13.58	7193	58.50	19.50	6	46	FSET-2000-59-20-20	59.00	20.00	20.00	18.58	8723	58.33	19.33	6
17	FSET-2000-69-20-15	69.00	20.00	15.00	13.58	8955	68.50	19.50	8	47	FSET-2000-69-20-20	69.00	20.00	20.00	18.58	10995	68.33	19.33	8
18	FSET-2000-79-20-15	79.00	20.00	15.00	13.58	9675	78.50	19.50	8	48	FSET-2000-79-20-20	79.00	20.00	20.00	18.58	11715	78.33	19.33	8
19	FSET-2000-89-20-15	89.00	20.00	15.00	13.58	10395	88.50	19.50	8	49	FSET-2000-89-20-20	89.00	20.00	20.00	18.58	12435	88.33	19.33	8
20	FSET-2000-99-20-15	99.00	20.00	15.00	13.58	12157	98.50	19.50	10	50	FSET-2000-99-20-20	99.00	20.00	20.00	18.58	14707	98.33	19.33	10
21	FSET-2000-09-25-15	9.00	25.00	15.00	13.58	2893	8.50	24.50	4	51	FSET-2000-09-25-20	9.00	25.00	20.00	18.58	3913	8.33	24.33	4
22	FSET-2000-19-25-15	19.00	25.00	15.00	13.58	3493	18.50	24.50	4	52	FSET-2000-19-25-20	19.00	25.00	20.00	18.58	4513	18.33	24.33	4
23	FSET-2000-29-25-15	29.00	25.00	15.00	13.42	4441	28.50	24.50	4	53	FSET-2000-29-25-20	29.00	25.00	20.00	18.42	5461	28.33	24.33	4
24	FSET-2000-39-25-15	39.00	25.00	15.00	13.58	5960	38.50	24.50	6	54	FSET-2000-39-25-20	39.00	25.00	20.00	18.58	7490	38.33	24.33	6
25	FSET-2000-49-25-15	49.00	25.00	15.00	13.42	7148	48.50	24.50	6	55	FSET-2000-49-25-20	49.00	25.00	20.00	18.42	8678	48.33	24.33	6
26	FSET-2000-59-25-15	59.00	25.00	15.00	13.42	7868	58.50	24.50	6	56	FSET-2000-59-25-20	59.00	25.00	20.00	18.42	9398	58.33	24.33	6
27	FSET-2000-69-25-15	69.00	25.00	15.00	13.42	9855	68.50	24.50	8	57	FSET-2000-69-25-20	69.00	25.00	20.00	18.42	11895	68.33	24.33	8
28	FSET-2000-79-25-15	79.00	25.00	15.00	13.42	10575	78.50	24.50	8	58	FSET-2000-79-25-20	79.00	25.00	20.00	18.42	12615	78.33	24.33	8
29	FSET-2000-89-25-15	89.00	25.00	15.00	13.42	11295	88.50	24.50	8	59	FSET-2000-89-25-20	89.00	25.00	20.00	18.42	13335	88.33	24.33	8
30	FSET-2000-99-25-15	99.00	25.00	15.00	13.42	13282	98.50	24.50	10	60	FSET-2000-99-25-20	99.00	25.00	20.00	18.42	15832	98.33	24.33	10