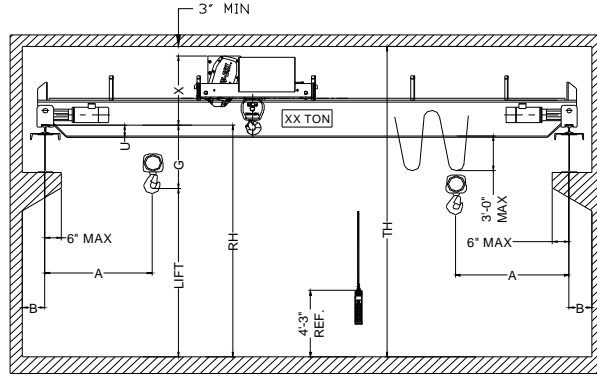
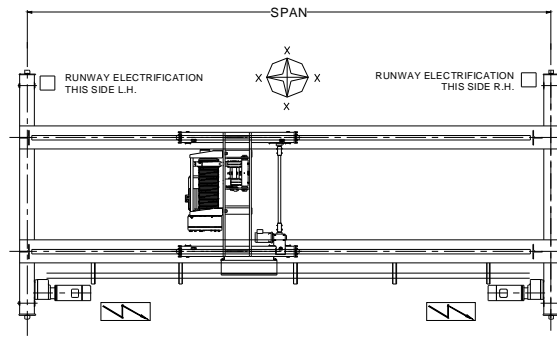
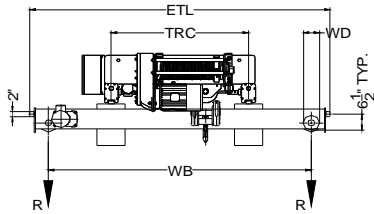




42827 Irwin Drive  
Harrison Twp. MI 48045 USA  
P/ 586-468-0909 F/ 586-468-2711  
E/ info@mccrane.com W/ mccrane.com

**DIMENSIONS & WEIGHTS - TYPE TRDGWS**  
**20-TON TOP RUNNING DOUBLE**  
**GIRDER CRANE WITH WIRE ROPE HOIST**  
**CRANE DATA FOR CLASS-C SERVICE ONLY**



HOIST MFG: SHAW BOX OR YALE TROLLEY MFG: SHAW BOX OR YALE ENDTRUCK MFG.: SHAW BOX OR YALE

CRANE DATA TABLE PART-A

CRANE MODEL #	CRANE CAP. U.S. TONS	SPAN FEET	DIMENSIONS							REEVING	LIFT (FT)	BRIDGE WT. LBS.	TROLLEY WT. LBS.	SHIP WT. LBS.	MAX. W/L R (LBS)
			A (IN)	B (IN)	G (IN)	U (IN)	X (IN)	WB (IN)	ETL (IN)						
TRDGWS-20-20	20	20	56	8	-3	0	54	120	139	6PS-15mm	26.6	6,664	3,800	10,464	18,456
TRDGWS-20-24	20	24	56	8	-3	0	54	120	139	6PS-15mm	26.6	7,612	3,800	11,412	19,545
TRDGWS-20-28	20	28	56	8	-3	0	54	120	139	6PS-15mm	26.6	8,560	3,800	12,360	20,390
TRDGWS-20-32	20	32	56	8	-3	0	54	120	139	6PS-15mm	26.6	10,148	3,800	13,948	21,243
TRDGWS-20-36	20	36	56	8	-3	0	54	120	139	6PS-15mm	26.6	11,968	3,800	15,768	22,053
TRDGWS-20-40	20	40	56	8	-3	3	54	120	139	6PS-15mm	26.6	13,804	3,800	17,604	22,796
TRDGWS-20-44	20	44	56	8	-3	3	54	120	139	6PS-15mm	26.6	16,312	3,800	20,112	23,655
TRDGWS-20-48	20	48	56	8	-3	6	54	120	139	6PS-15mm	26.6	19,060	3,800	22,860	24,536
TRDGWS-20-52	20	52	56	8	-3	9	54	120	139	6PS-15mm	26.6	21,736	3,800	25,536	25,369
TRDGWS-20-56	20	56	56	8	-3	9	54	120	139	6PS-15mm	26.6	25,276	3,800	29,076	26,394
TRDGWS-20-60	20	60	56	8	-3	17	54	120	139	6PS-15mm	26.6	20,584	3,800	24,384	25,343
TRDGWS-20-64	20	64	56	8	-3	17	54	120	139	6PS-15mm	26.6	22,852	3,800	26,652	26,016
TRDGWS-20-68	20	68	56	8	-3	17	54	120	139	6PS-15mm	26.6	25,248	3,800	29,048	26,709
TRDGWS-20-72	20	72	56	8	-3	23	54	144	168	6PS-15mm	26.6	28,051	3,850	31,901	27,517
TRDGWS-20-76	20	76	56	8	-3	25	54	144	168	6PS-15mm	26.6	29,887	3,850	33,737	28,050
TRDGWS-20-80	20	80	56	8	-3	27	54	144	168	6PS-15mm	26.6	31,931	3,850	35,781	28,629
TRDGWS-20-84	20	84	56	8	-3	27	54	144	168	6PS-15mm	26.6	34,711	3,850	38,561	29,385
TRDGWS-20-88	20	88	56	9	-8	22	59	174	200	6PS-15mm	26.6	40,383	3,950	44,333	30,905
TRDGWS-20-92	20	92	56	9	-8	24	59	174	200	6PS-15mm	26.6	43,843	3,950	47,793	31,821
TRDGWS-20-96	20	96	56	9	-8	26	59	174	200	6PS-15mm	26.6	46,311	3,950	50,261	32,485
TRDGWS-20-100	20	100	56	9	-8	27	59	174	200	6PS-15mm	26.6	49,443	3,950	53,393	33,310

DASHED RED LINE INDICATES SINGLE WEB BEAM TO DOUBLE WEB TORSIONAL BOX TRANSITION LINE

CRANE DATA TABLE PART-B

CRANE MODEL #	TROLLEY-HOIST MODEL #	ENDTRUCK MODEL #	TRC (IN)	HOIST SPD FPM	HOIST HP	TROLLEY SPD FPM	TROLLEY HP	BRIDGE SPD FPM	BRIDGE HP	TROLLEY WD (IN)	BRIDGE WD (IN)	STD. POWER (V)	FULL LOAD AMPS 460V	ASCE RAIL
TRDGWS-20-20	WD3T20-026S12-2-78	260TD105TJ*20	78	12/3 TS	20/5	75 VFC	2 X 1.0	100 VFC	2 X 2.0	8	10	460	46	60/80
TRDGWS-20-24	WD3T20-026S12-2-78	260TD105TJ*20	78	12/3 TS	20/5	75 VFC	2 X 1.0	100 VFC	2 X 2.0	8	10	460	46	60/80
TRDGWS-20-28	WD3T20-026S12-2-78	260TD105TJ*20	78	12/3 TS	20/5	75 VFC	2 X 1.0	100 VFC	2 X 2.0	8	10	460	46	60/80
TRDGWS-20-32	WD3T20-026S12-2-78	260TD105TJ*20	78	12/3 TS	20/5	75 VFC	2 X 1.0	100 VFC	2 X 2.0	8	10	460	46	60/80
TRDGWS-20-36	WD3T20-026S12-2-78	260TD105TJ*20	78	12/3 TS	20/5	75 VFC	2 X 1.0	100 VFC	2 X 2.0	8	10	460	46	60/80
TRDGWS-20-40	WD3T20-026S12-2-78	260TD105TJ*20	78	12/3 TS	20/5	75 VFC	2 X 1.0	100 VFC	2 X 2.0	8	10	460	46	60/80
TRDGWS-20-44	WD3T20-026S12-2-78	260TD105TJ*20	78	12/3 TS	20/5	75 VFC	2 X 1.0	100 VFC	2 X 2.0	8	10	460	46	60/80
TRDGWS-20-48	WD3T20-026S12-2-78	260TD105TJ*20	78	12/3 TS	20/5	75 VFC	2 X 1.0	100 VFC	2 X 2.0	8	10	460	46	60/80
TRDGWS-20-52	WD3T20-026S12-2-78	260TD105TJ*20	78	12/3 TS	20/5	75 VFC	2 X 1.0	100 VFC	2 X 2.0	8	10	460	46	60/80
TRDGWS-20-56	WD3T20-026S12-2-78	260TD105TJ*20	78	12/3 TS	20/5	75 VFC	2 X 1.0	100 VFC	2 X 2.0	8	10	460	46	60/80
TRDGWS-20-60	WD3T20-026S12-2-78	260TD105TJ*20	78	12/3 TS	20/5	75 VFC	2 X 1.0	100 VFC	2 X 2.0	8	10	460	46	60/80
TRDGWS-20-64	WD3T20-026S12-2-78	260TD105TJ*20	78	12/3 TS	20/5	75 VFC	2 X 1.0	100 VFC	2 X 2.0	8	10	460	46	60/80
TRDGWS-20-68	WD3T20-026S12-2-78	260TD105TJ*20	78	12/3 TS	20/5	75 VFC	2 X 1.0	100 VFC	2 X 2.0	8	10	460	46	60/80
TRDGWS-20-72	WD3T20-026S12-2-84	12R12.0/3.0-VNC-100	84	12/3 TS	20/5	75 VFC	2 X 1.0	100 VFC	2 X 3.0	8	12	460	50	60/80
TRDGWS-20-76	WD3T20-026S12-2-84	12R12.0/3.0-VNC-100	84	12/3 TS	20/5	75 VFC	2 X 1.0	100 VFC	2 X 3.0	8	12	460	50	60/80
TRDGWS-20-80	WD3T20-026S12-2-84	12R12.0/3.0-VNC-100	84	12/3 TS	20/5	75 VFC	2 X 1.0	100 VFC	2 X 3.0	8	12	460	50	60/80
TRDGWS-20-84	WD3T20-026S12-2-84	12R12.0/3.0-VNC-100	84	12/3 TS	20/5	75 VFC	2 X 1.0	100 VFC	2 X 3.0	8	12	460	50	60/80
TRDGWS-20-88	WD3T20-026S12-2-96	15R14.5/3.0-VNC-100	96	12/3 TS	20/5	75 VFC	2 X 1.0	100 VFC	2 X 3.0	8	15	460	50	60/80
TRDGWS-20-92	WD3T20-026S12-2-96	15R14.5/3.0-VNC-100	96	12/3 TS	20/5	75 VFC	2 X 1.0	100 VFC	2 X 3.0	8	15	460	50	60/80
TRDGWS-20-96	WD3T20-026S12-2-96	15R14.5/3.0-VNC-100	96	12/3 TS	20/5	75 VFC	2 X 1.0	100 VFC	2 X 3.0	8	15	460	50	60/80
TRDGWS-20-100	WD3T20-026S12-2-96	15R14.5/3.0-VNC-100	96	12/3 TS	20/5	75 VFC	2 X 1.0	100 VFC	2 X 3.0	8	15	460	50	60/80

(-G) DIMENSION INDICATES HIGH HOOK ELEVATION HIGHER THAN RAIL HEIGHT (RH)

GENERAL NOTES:

DIMENSIONS "RH" AND "TH" ARE SPECIFIED BY CUSTOMER  
DIMENSION "A" IS APPROX. AND DOES NOT CONSIDER MAINLINE  
WHEEL LOAD "R" DOES NOT INCLUDE IMPACT  
CRANE ALSO AVAILABLE AT 230/3/60 AND 575/3/60 POWER