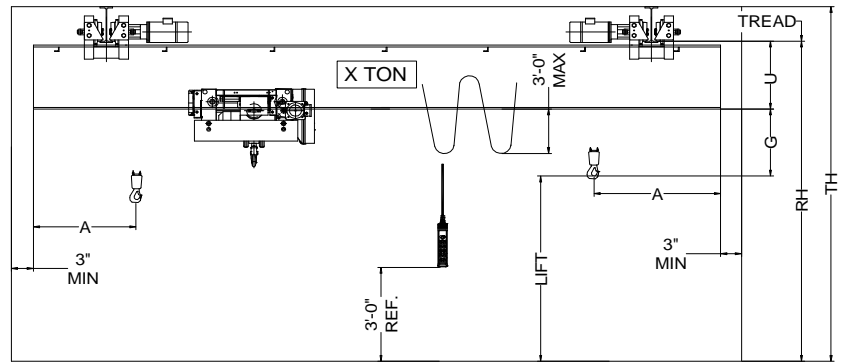
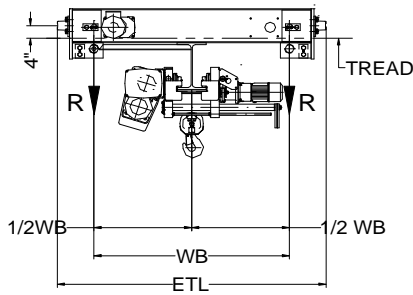
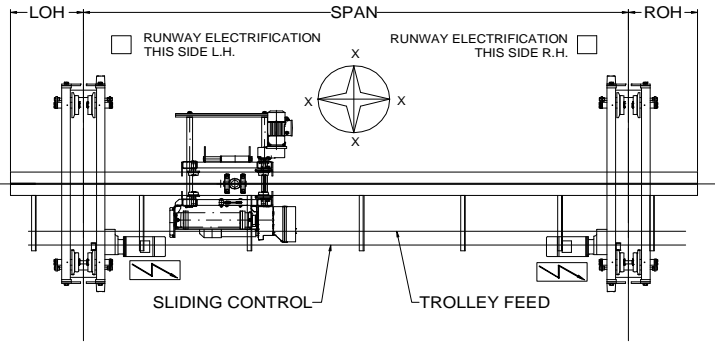




42827 Irwin Drive
 Harrison Twp. MI 48045 USA
 P/ 586-468-0909 F/ 586-468-2711
 E/ info@mccrane.com W/ mccrane.com

**DIMENSIONS & WEIGHTS - TYPE URSGWR
 10-TON UNDER RUNNING SINGLE
 GIRDER CRANE WITH WIRE ROPE HOIST**



HOIST MFG: STAHL TROLLEY MFG: STAHL ENDTRUCK MFG.: CRANESOURCE

CRANE DATA TABLE PART-A

CRANE MODEL #	CRANE CAP. U.S. TONS	SPAN FEET	DIMENSIONS								BRIDGE WT. LBS.	TROLLEY WT. LBS.	SHIP WT. LBS.	MAX. W/L R (LBS)
			A (IN)	OH (IN)	G (IN)	U (IN)	WB (IN)	REEVING	ETL (IN)	LIFT (FT)				
URSGWR-10-18	10	18	36	12	24	21	72	4PS-12mm	96	20	3,971	1,800	5,771	10,682
URSGWR-10-22	10	22	36	12	24	21	72	4PS-12mm	96	20	4,635	1,800	6,435	11,068
URSGWR-10-26	10	26	36	12	24	24	72	4PS-12mm	96	20	5,259	1,800	7,059	11,376
URSGWR-10-30	10	30	36	12	24	24	72	4PS-12mm	96	20	6,115	1,800	7,915	11,702
URSGWR-10-34	10	34	36	12	24	24	72	4PS-12mm	96	20	6,663	1,800	8,463	11,925
URSGWR-10-38	10	38	36	12	24	27	72	4PS-12mm	96	20	7,571	1,800	9,371	12,219
URSGWR-10-42	10	42	36	12	24	27	72	4PS-12mm	96	20	8,815	1,800	10,615	12,585
URSGWR-10-46	10	46	36	12	24	30	72	4PS-12mm	96	20	10,179	1,800	11,979	12,971
URSGWR-10-50	10	50	36	12	24	33	90	4PS-12mm	112	20	11,669	1,800	13,469	13,381
URSGWR-10-54	10	54	36	12	24	33	90	4PS-12mm	112	20	12,421	1,800	14,221	13,602
URSGWR-10-58	10	58	36	12	24	36	90	4PS-12mm	112	20	14,853	1,800	16,653	14,237

(R OR L)

CRANE DATA TABLE PART-B

CRANE MODEL #	ENDTRUCK MODEL #	TROLLEY-HOIST MODEL #	HOIST SPD FPM	HOIST HP	TROLLEY SPD FPM	TROLLEY HP	BRIDGE SPD FPM	BRIDGE HP.	TROLLEY WD (IN)	BRIDGE WD (IN)	STD. POWER	FULL LOAD AMPS 460V	R.WAY FLG (IN)
URSGWR-10-18	10/48UD195	KESH5025-20-4/1L2	20/3.3 TS	15.5/2.4	80/20 TS	0.9/0.2	95 VFC	2 X 1.0	5.51	8.00	460	33	5.5-12.0
URSGWR-10-22	10/48UD195	KESH5025-20-4/1L2	20/3.3 TS	15.5/2.4	80/20 TS	0.9/0.2	95 VFC	2 X 1.0	5.51	8.00	460	33	5.5-12.0
URSGWR-10-26	10/48UD195	KESH5025-20-4/1L2	20/3.3 TS	15.5/2.4	80/20 TS	0.9/0.2	95 VFC	2 X 1.0	5.51	8.00	460	33	5.5-12.0
URSGWR-10-30	10/48UD195	KESH5025-20-4/1L2	20/3.3 TS	15.5/2.4	80/20 TS	0.9/0.2	95 VFC	2 X 1.0	5.51	8.00	460	33	5.5-12.0
URSGWR-10-34	10/48UD195	KESH5025-20-4/1L2	20/3.3 TS	15.5/2.4	80/20 TS	0.9/0.2	95 VFC	2 X 1.0	5.51	8.00	460	33	5.5-12.0
URSGWR-10-38	10/48UD195	KESH5025-20-4/1L2	20/3.3 TS	15.5/2.4	80/20 TS	0.9/0.2	95 VFC	2 X 1.0	5.51	8.00	460	33	5.5-12.0
URSGWR-10-42	10/48UD195	KESH5025-20-4/1L2	20/3.3 TS	15.5/2.4	80/20 TS	0.9/0.2	95 VFC	2 X 1.0	5.51	8.00	460	33	5.5-12.0
URSGWR-10-46	10/48UD195	KESH5025-20-4/1L2	20/3.3 TS	15.5/2.4	80/20 TS	0.9/0.2	95 VFC	2 X 1.0	5.51	8.00	460	33	5.5-12.0
URSGWR-10-50	10/60UD195	KESH5025-20-4/1L2	20/3.3 TS	15.5/2.4	80/20 TS	0.9/0.2	95 VFC	2 X 1.0	5.51	8.00	460	33	5.5-12.0
URSGWR-10-54	10/60UD195	KESH5025-20-4/1L2	20/3.3 TS	15.5/2.4	80/20 TS	0.9/0.2	95 VFC	2 X 1.0	5.51	8.00	460	33	5.5-12.0
URSGWR-10-58	10/60UD195	KESH5025-20-4/1L2	20/3.3 TS	15.5/2.4	80/20 TS	0.9/0.2	95 VFC	2 X 1.0	5.51	8.00	460	33	5.5-12.0

SPEED CODES:	SS	SINGLE SPEED OPERATION WITH SOFT START
	TS	TWO SPEED OPERATION WITH SOFT START
	VFC	VARIABLE SPEED CONTROL 2-STEP INFINITELY VARIABLE

* TROLLEY OPTION AVAILABLE AT 40/10 FPM T/S OR 80FPM VFC
 ** BRIDGE OPTION AVAILABLE AT 65, 115, or 135 FPM VFC

GENERAL NOTES:

DIMENSIONS "RH" AND "TH" ARE SPECIFIED BY CUSTOMER
 DIMENSION "A" IS APPROX. AND DOES NOT CONSIDER MAINLINE
 WHEEL LOAD "R" DOES NOT INCLUDE IMPACT
 CRANE ALSO AVAILABLE AT 230/3/60 AND 575/3/60 POWER
 ENDTRUCKS FOR RUNWAY FLANGE WIDTH 5.5"-12"