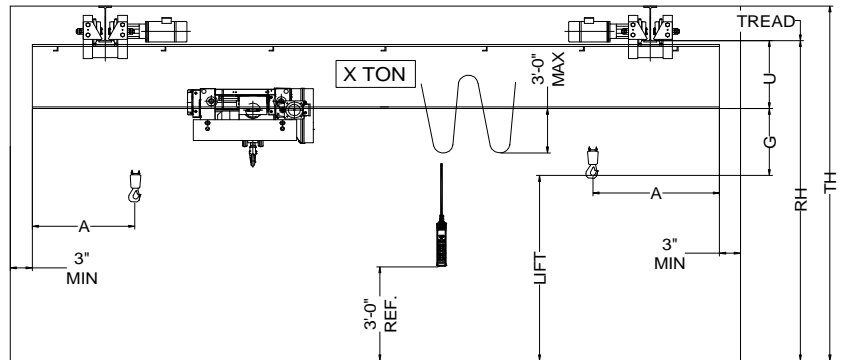
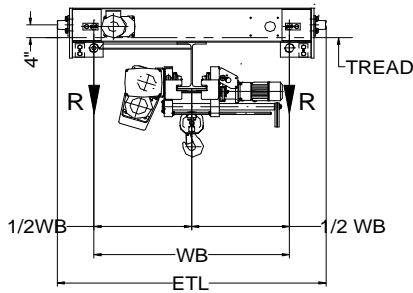
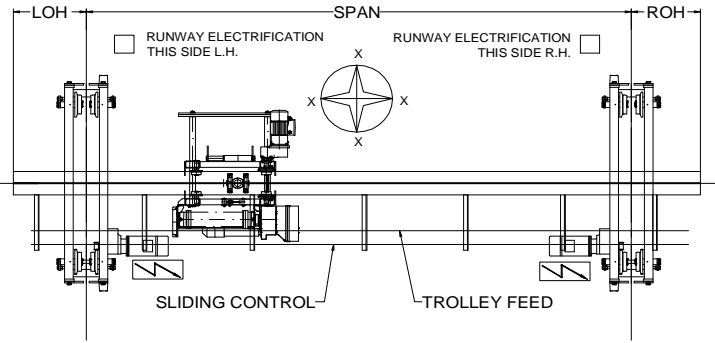




42827 Irwin Drive
 Harrison Twp. MI 48045 USA
 P/ 586-468-0909 F/ 586-468-2711
 E/ info@mccrane.com W/ mccrane.com

**DIMENSIONS & WEIGHTS - TYPE URSGWR
 7.5-TON UNDER RUNNING SINGLE
 GIRDER CRANE WITH WIRE ROPE HOIST**



HOIST MFG: STAHL TROLLEY MFG: STAHL ENDTRUCK MFG.: CRANESOURCE

CRANE DATA TABLE PART-A

CRANE MODEL #	CRANE CAP. U.S. TONS	SPAN FEET	DIMENSIONS								BRIDGE WT. LBS.	TROLLEY WT. LBS.	SHIP WT. LBS.	MAX. W/L R (LBS)
			A (IN)	OH (IN)	G (IN)	U (IN)	WB (IN)	REEVING	ETL (IN)	LIFT (FT)				
URSGWR-07-18	7.5	18	32	12	20	21	72	4PS-8.5mm	96	20	3,451	815	4,266	8,038
URSGWR-07-22	7.5	22	32	12	20	21	72	4PS-8.5mm	96	20	4,155	815	4,970	8,347
URSGWR-07-26	7.5	26	32	12	20	21	72	4PS-8.5mm	96	20	4,559	815	5,374	8,540
URSGWR-07-30	7.5	30	32	12	20	21	72	4PS-8.5mm	96	20	5,315	815	6,130	8,797
URSGWR-07-34	7.5	34	32	12	20	21	72	4PS-8.5mm	96	20	5,763	815	6,578	8,961
URSGWR-07-38	7.5	38	32	12	20	21	72	4PS-8.5mm	96	20	6,571	815	7,386	9,203
URSGWR-07-42	7.5	42	32	12	20	27	72	4PS-8.5mm	96	20	7,539	815	8,354	9,478
URSGWR-07-46	7.5	46	32	12	22	27	72	4PS-8.5mm	96	20	8,739	815	9,554	9,806
URSGWR-07-50	7.5	50	32	12	22	27	90	4PS-8.5mm	112	20	10,265	815	11,080	10,210
URSGWR-07-54	7.5	54	32	12	22	30	90	4PS-8.5mm	112	20	11,749	815	12,564	10,601
URSGWR-07-58	7.5	58	32	12	22	33	90	4PS-8.5mm	112	20	13,173	815	13,988	10,974

(R OR L)

CRANE DATA TABLE PART-B

CRANE MODEL #	ENDTRUCK MODEL #	TROLLEY-HOIST MODEL #	HOIST SPD FPM	HOIST HP	TROLLEY SPD FPM	TROLLEY HP	BRIDGE SPD FPM	BRIDGE HP.	TROLLEY WD (IN)	BRIDGE WD (IN)	STD. POWER	FULL LOAD AMPS 460V	R.WAY FLG (IN)
URSGWR-07-18	10/48UD195	KESH4016-16-4/1L2	16/2.6 TS	7.8/1.3	80/20 TS	0.9/0.2	95 VFC	2 X 1.0	4.00	8.00	460	21	5.5-12.0
URSGWR-07-22	10/48UD195	KESH4016-16-4/1L2	16/2.6 TS	7.8/1.3	80/20 TS	0.9/0.2	95 VFC	2 X 1.0	4.00	8.00	460	21	5.5-12.0
URSGWR-07-26	10/48UD195	KESH4016-16-4/1L2	16/2.6 TS	7.8/1.3	80/20 TS	0.9/0.2	95 VFC	2 X 1.0	4.00	8.00	460	21	5.5-12.0
URSGWR-07-30	10/48UD195	KESH4016-16-4/1L2	16/2.6 TS	7.8/1.3	80/20 TS	0.9/0.2	95 VFC	2 X 1.0	4.00	8.00	460	21	5.5-12.0
URSGWR-07-34	10/48UD195	KESH4016-16-4/1L2	16/2.6 TS	7.8/1.3	80/20 TS	0.9/0.2	95 VFC	2 X 1.0	4.00	8.00	460	21	5.5-12.0
URSGWR-07-38	10/48UD195	KESH4016-16-4/1L2	16/2.6 TS	7.8/1.3	80/20 TS	0.9/0.2	95 VFC	2 X 1.0	4.00	8.00	460	21	5.5-12.0
URSGWR-07-42	10/48UD195	KESH4016-16-4/1L2	16/2.6 TS	7.8/1.3	80/20 TS	0.9/0.2	95 VFC	2 X 1.0	4.00	8.00	460	21	5.5-12.0
URSGWR-07-46	10/48UD195	KESH4016-16-4/1L2	16/2.6 TS	7.8/1.3	80/20 TS	0.9/0.2	95 VFC	2 X 1.0	4.00	8.00	460	21	5.5-12.0
URSGWR-07-50	10/60UD195	KESH4016-16-4/1L2	16/2.6 TS	7.8/1.3	80/20 TS	0.9/0.2	95 VFC	2 X 1.0	4.00	8.00	460	21	5.5-12.0
URSGWR-07-54	10/60UD195	KESH4016-16-4/1L2	16/2.6 TS	7.8/1.3	80/20 TS	0.9/0.2	95 VFC	2 X 1.0	4.00	8.00	460	21	5.5-12.0
URSGWR-07-58	10/60UD195	KESH4016-16-4/1L2	16/2.6 TS	7.8/1.3	80/20 TS	0.9/0.2	95 VFC	2 X 1.0	4.00	8.00	460	21	5.5-12.0

SPEED CODES:	SS	SINGLE SPEED OPERATION WITH SOFT START
	TS	TWO SPEED OPERATION WITH SOFT START
	VFC	VARIABLE SPEED CONTROL 2-STEP INFINITELY VARIABLE

* TROLLEY OPTION AVAILABLE AT 40/10 FPM T/S OR 80FPM VFC
 ** BRIDGE OPTION AVAILABLE AT 65, 115, or 135 FPM VFC

GENERAL NOTES:

DIMENSIONS "RH" AND "TH" ARE SPECIFIED BY CUSTOMER
 DIMENSION "A" IS APPROX. AND DOES NOT CONSIDER MAINLINE
 WHEEL LOAD "R" DOES NOT INCLUDE IMPACT
 CRANE ALSO AVAILABLE AT 230/3/60 AND 575/3/60 POWER
 ENDTRUCKS FOR RUNWAY FLANGE WIDTH 5.5"-12"