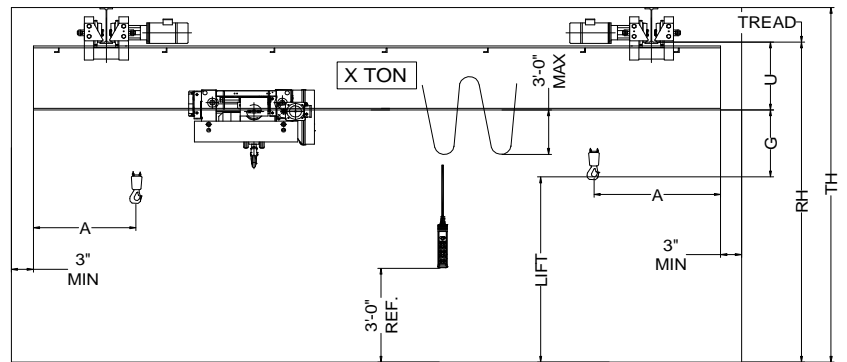
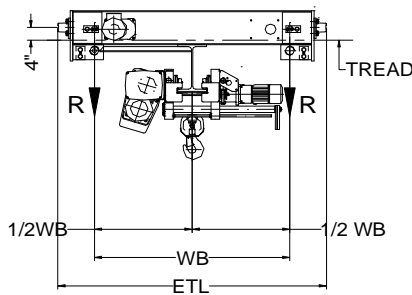
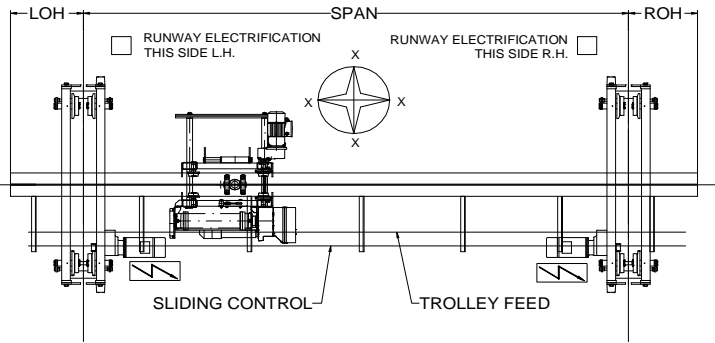




42827 Irwin Drive  
 Harrison Twp. MI 48045 USA  
 P/ 586-468-0909 F/ 586-468-2711  
 E/ info@mccrane.com W/ mccrane.com

**DIMENSIONS & WEIGHTS - TYPE URSGWR  
 5-TON UNDER RUNNING SINGLE  
 GIRDER CRANE WITH WIRE ROPE HOIST**



HOIST MFG: STAHL      TROLLEY MFG: STAHL      ENDTRUCK MFG.: CRANESOURCE

CRANE DATA TABLE PART-A

CRANE MODEL #	CRANE CAP. U.S. TONS	SPAN FEET	DIMENSIONS								BRIDGE WT. LBS.	TROLLEY WT. LBS.	SHIP WT. LBS.	MAX. W/L R (LBS)
			A (IN)	OH (IN)	G (IN)	U (IN)	WB (IN)	REEVING	ETL (IN)	LIFT (FT)				
URSGWR-05-18	5	18	32	12	20	17	72	4PS-8.5mm	96	20	2,675	815	3,490	5,576
URSGWR-05-22	5	22	32	12	20	19	72	4PS-8.5mm	96	20	3,043	815	3,858	5,759
URSGWR-05-26	5	26	32	12	20	19	72	4PS-8.5mm	96	20	3,611	815	4,426	5,964
URSGWR-05-30	5	30	32	12	20	19	72	4PS-8.5mm	96	20	3,939	815	4,754	6,092
URSGWR-05-34	5	34	32	12	20	21	72	4PS-8.5mm	96	20	4,591	815	5,406	6,290
URSGWR-05-38	5	38	32	12	20	21	72	4PS-8.5mm	96	20	5,355	815	6,170	6,509
URSGWR-05-42	5	42	32	12	20	21	72	4PS-8.5mm	96	20	6,243	815	7,058	6,754
URSGWR-05-46	5	46	32	12	22	24	72	4PS-8.5mm	96	20	6,883	815	7,698	6,932
URSGWR-05-50	5	50	32	12	22	27	90	4PS-8.5mm	112	20	8,309	815	9,124	7,305
URSGWR-05-54	5	54	32	12	22	27	90	4PS-8.5mm	112	20	9,621	815	10,436	7,646
URSGWR-05-58	5	58	32	12	22	30	90	4PS-8.5mm	112	20	11,105	815	11,920	8,028

(R OR L)

CRANE DATA TABLE PART-B

CRANE MODEL #	ENDTRUCK MODEL #	TROLLEY-HOIST MODEL #	HOIST SPD FPM	HOIST HP	TROLLEY SPD FPM	TROLLEY HP	BRIDGE SPD FPM	BRIDGE HP	TROLLEY WD (IN)	BRIDGE WD (IN)	STD. POWER	FULL LOAD AMPS 460V	R.WAY FLG (IN)
URSGWR-05-18	05/48UD195	KESH4012-20-4/1L2	20/3.3 TS	7.8/1.3	80/20 TS	0.60/0.15	95 VFC	2 X 0.50	4.00	6.50	460	17	4.7-12.0
URSGWR-05-22	05/48UD195	KESH4012-20-4/1L2	20/3.3 TS	7.8/1.3	80/20 TS	0.60/0.15	95 VFC	2 X 0.50	4.00	6.50	460	17	4.7-12.0
URSGWR-05-26	05/48UD195	KESH4012-20-4/1L2	20/3.3 TS	7.8/1.3	80/20 TS	0.60/0.15	95 VFC	2 X 0.50	4.00	6.50	460	17	4.7-12.0
URSGWR-05-30	05/48UD195	KESH4012-20-4/1L2	20/3.3 TS	7.8/1.3	80/20 TS	0.60/0.15	95 VFC	2 X 0.50	4.00	6.50	460	17	4.7-12.0
URSGWR-05-34	05/48UD195	KESH4012-20-4/1L2	20/3.3 TS	7.8/1.3	80/20 TS	0.60/0.15	95 VFC	2 X 0.50	4.00	6.50	460	17	4.7-12.0
URSGWR-05-38	05/48UD195	KESH4012-20-4/1L2	20/3.3 TS	7.8/1.3	80/20 TS	0.60/0.15	95 VFC	2 X 0.50	4.00	6.50	460	17	4.7-12.0
URSGWR-05-42	05/48UD195	KESH4012-20-4/1L2	20/3.3 TS	7.8/1.3	80/20 TS	0.60/0.15	95 VFC	2 X 0.50	4.00	6.50	460	17	4.7-12.0
URSGWR-05-46	05/48UD195	KESH4012-20-4/1L2	20/3.3 TS	7.8/1.3	80/20 TS	0.60/0.15	95 VFC	2 X 0.50	4.00	6.50	460	17	4.7-12.0
URSGWR-05-50	05/60UD195	KESH4012-20-4/1L2	20/3.3 TS	7.8/1.3	80/20 TS	0.60/0.15	95 VFC	2 X 0.75	4.00	6.50	460	19	4.7-12.0
URSGWR-05-54	05/60UD195	KESH4012-20-4/1L2	20/3.3 TS	7.8/1.3	80/20 TS	0.60/0.15	95 VFC	2 X 0.75	4.00	6.50	460	19	4.7-12.0
URSGWR-05-58	05/60UD195	KESH4012-20-4/1L2	20/3.3 TS	7.8/1.3	80/20 TS	0.60/0.15	95 VFC	2 X 0.75	4.00	6.50	460	19	4.7-12.0

SPEED CODES:	SS	SINGLE SPEED OPERATION WITH SOFT START
	TS	TWO SPEED OPERATION WITH SOFT START
	VFC	VARIABLE SPEED CONTROL 2-STEP INFINITELY VARIABLE

\* TROLLEY OPTION AVAILABLE AT 40/10 FPM T/S OR 80FPM VFC  
 \*\* BRIDGE OPTION AVAILABLE AT 65, 115, or 135 FPM VFC

GENERAL NOTES:

DIMENSIONS "RH" AND "TH" ARE SPECIFIED BY CUSTOMER  
 DIMENSION "A" IS APPROX. AND DOES NOT CONSIDER MAINLINE  
 WHEEL LOAD "R" DOES NOT INCLUDE IMPACT  
 CRANE ALSO AVAILABLE AT 230/3/60 AND 575/3/60 POWER  
 ENDTRUCKS FOR RUNWAY FLANGE WIDTH 4.6"-12"