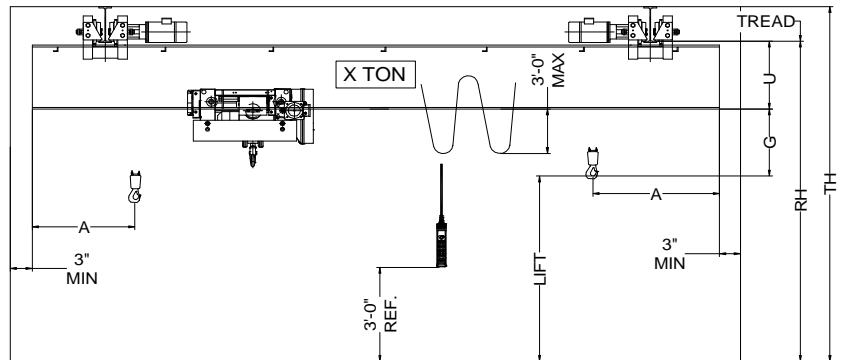
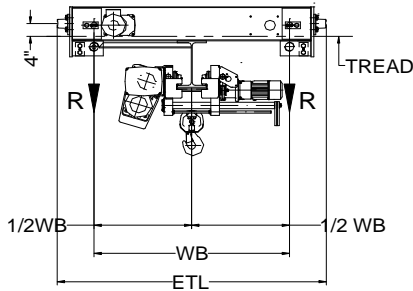
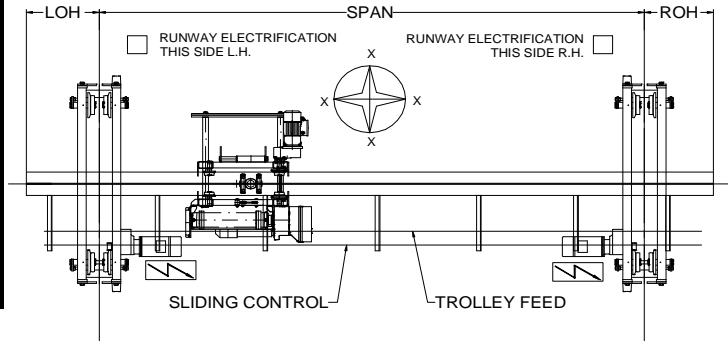




42827 Irwin Drive
 Harrison Twp. MI 48045 USA
 P/ 586-468-0909 F/ 586-468-2711
 E/ info@mccrane.com W/ mccrane.com

**DIMENSIONS & WEIGHTS - TYPE URSGWR
 3-TON UNDER RUNNING SINGLE
 GIRDER CRANE WITH WIRE ROPE HOIST**



HOIST MFG: STAHL TROLLEY MFG: STAHL ENDTRUCK MFG.: CRANESOURCE

CRANE DATA TABLE PART-A

CRANE MODEL #	CRANE CAP. U.S. TONS	SPAN FEET	DIMENSIONS								BRIDGE WT. LBS.	TROLLEY WT. LBS.	SHIP WT. LBS.	MAX. W/L R (LBS)
			A (IN)	OH (IN)	G (IN)	U (IN)	WB (IN)	REEVING	ETL (IN)	LIFT (FT)				
URSGWR-03-18	3	18	31	12	18	15	54	4PS-7mm	68	20	1,515	640	2,155	3,407
URSGWR-03-22	3	22	31	12	18	15	54	4PS-7mm	68	20	1,835	640	2,475	3,540
URSGWR-03-26	3	26	31	12	18	15	54	4PS-7mm	68	20	2,195	640	2,835	3,667
URSGWR-03-30	3	30	31	12	18	17	54	4PS-7mm	68	20	2,691	640	3,331	3,818
URSGWR-03-34	3	34	31	12	18	17	54	4PS-7mm	68	20	3,251	640	3,891	3,978
URSGWR-03-38	3	38	31	12	18	19	72	4PS-7mm	90	20	4,595	640	5,235	4,330
URSGWR-03-42	3	42	31	12	18	21	72	4PS-7mm	90	20	5,319	640	5,959	4,525
URSGWR-03-46	3	46	31	12	18	21	72	4PS-7mm	90	20	6,163	640	6,803	4,746
URSGWR-03-50	3	50	31	12	18	24	90	4PS-7mm	112	20	7,477	640	8,117	5,084
URSGWR-03-54	3	54	31	12	22	24	90	4PS-7mm	112	20	7,941	640	8,581	5,208
URSGWR-03-58	3	58	31	12	22	28	90	4PS-7mm	112	20	9,365	640	10,005	5,571

(R OR L)

CRANE DATA TABLE PART-B

CRANE MODEL #	ENDTRUCK MODEL #	TROLLEY-HOIST MODEL #	HOIST SPD FPM	HOIST HP	TROLLEY SPD FPM	TROLLEY HP	BRIDGE SPD FPM	BRIDGE HP.	TROLLEY WD (IN)	BRIDGE WD (IN)	STD. POWER	FULL LOAD AMPS 460V	R.WAY FLG (IN)
URSGWR-03-18	B03/36UD1110	KESH3008-20-4/1L2	20/3.3 TS	4.9/0.7	80/20 TS	0.60/0.15	110 VFC	2 X 0.50	3.13	4.00	460	13	3.4-10.5
URSGWR-03-22	B03/36UD1110	KESH3008-20-4/1L2	20/3.3 TS	4.9/0.7	80/20 TS	0.60/0.15	110 VFC	2 X 0.50	3.13	4.00	460	13	3.4-10.5
URSGWR-03-26	B03/36UD1110	KESH3008-20-4/1L2	20/3.3 TS	4.9/0.7	80/20 TS	0.60/0.15	110 VFC	2 X 0.50	3.13	4.00	460	13	3.4-10.5
URSGWR-03-30	B03/36UD1110	KESH3008-20-4/1L2	20/3.3 TS	4.9/0.7	80/20 TS	0.60/0.15	110 VFC	2 X 0.50	3.13	4.00	460	13	3.4-10.5
URSGWR-03-34	B03/36UD1110	KESH3008-20-4/1L2	20/3.3 TS	4.9/0.7	80/20 TS	0.60/0.15	110 VFC	2 X 0.50	3.13	4.00	460	13	3.4-10.5
URSGWR-03-38	B03/48UD1110	KESH3008-20-4/1L2	20/3.3 TS	4.9/0.7	80/20 TS	0.60/0.15	110 VFC	2 X 0.50	3.13	4.00	460	13	4.0-11.5
URSGWR-03-42	B03/48UD1110	KESH3008-20-4/1L2	20/3.3 TS	4.9/0.7	80/20 TS	0.60/0.15	110 VFC	2 X 0.50	3.13	4.00	460	13	4.0-11.5
URSGWR-03-46	B03/48UD1110	KESH3008-20-4/1L2	20/3.3 TS	4.9/0.7	80/20 TS	0.60/0.15	110 VFC	2 X 0.50	3.13	4.00	460	13	4.0-11.5
URSGWR-03-50	05/60UD195	KESH3008-20-4/1L2	20/3.3 TS	4.9/0.7	80/20 TS	0.60/0.15	95 VFC	2 X 0.75	3.13	6.50	460	15	4.6-12.0
URSGWR-03-54	05/60UD195	KESH3008-20-4/1L2	20/3.3 TS	4.9/0.7	80/20 TS	0.60/0.15	95 VFC	2 X 0.75	3.13	6.50	460	15	4.6-12.0
URSGWR-03-58	05/60UD195	KESH3008-20-4/1L2	20/3.3 TS	4.9/0.7	80/20 TS	0.60/0.15	95 VFC	2 X 0.75	3.13	6.50	460	15	4.6-12.0

SPEED CODES:	SS	SINGLE SPEED OPERATION WITH SOFT START
	TS	TWO SPEED OPERATION WITH SOFT START
	VFC	VARIABLE SPEED CONTROL 2-STEP INFINITELY VARIABLE

* TROLLEY OPTION AVAILABLE AT 40/10 FPM T/S OR 80FPM VFC

** BRIDGE OPTION AVAILABLE AT 55 OR 70 FPM VFC. OR SPAN >=38FT: 65, 115, 135 FPM VFC ENDTRUCKS FOR RUNWAY FLANGE WIDTH 4.6"-12"

GENERAL NOTES:

DIMENSIONS "RH" AND "TH" ARE SPECIFIED BY CUSTOMER
 DIMENSION "A" IS APPROX. AND DOES NOT CONSIDER MAINLINE
 WHEEL LOAD "R" DOES NOT INCLUDE IMPACT
 CRANE ALSO AVAILABLE AT 230/3/60 AND 575/3/60 POWER