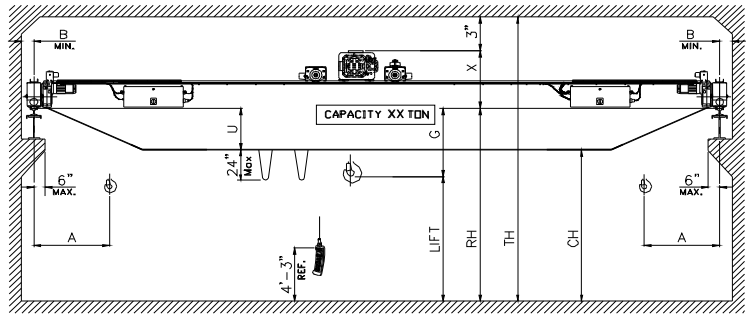
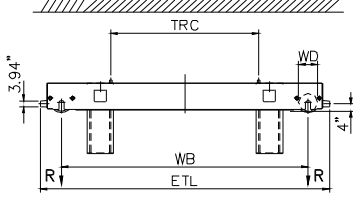
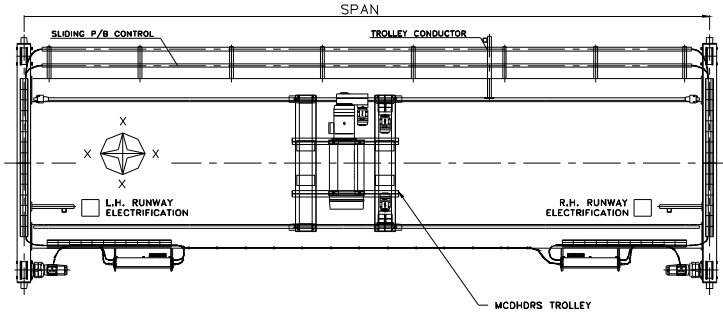




42827 Irwin Drive
Harrison Twp. MI 48045 USA
P/ 586-468-0909 F/ 586-468-2711
E/ info@mccrane.com W/ mccrane.com

DIMENSIONS & WEIGHTS - TYPE TRDGWDH
50-TON TOP RUNNING DOUBLE
GIRDER CRANE WITH WIRE ROPE HOIST
CRANE DATA FOR CLASS-C SERVICE ONLY



HOIST MFG.: DEMAG TROLLEY MFG.: DEMAG ENDTRUCK MFG.: DEMAG

CRANE DATA TABLE PART-A

CRANE MODEL #	CRANE CAP. U.S. TONS	SPAN FEET	DIMENSIONS										REEVING	LIFT (FT)	BRIDGE WT. LBS.	TROLLEY WT. LBS.	SHIP WT. LBS.	MAX. WL R (LBS)
			A (IN)	B (IN)	G (IN)	U (IN)	X (IN)	WB (IN)	ETL (IN)									
TRDGWD-50-20	50	20	70	10	14	0	60	158	189	4PS-25mm	29	11,540	8,400	19,940	41,277			
TRDGWD-50-24	50	24	70	10	14	0	60	158	189	4PS-25mm	29	13,408	8,400	21,808	44,378			
TRDGWD-50-28	50	28	70	10	14	3	60	158	189	4PS-25mm	29	15,572	8,400	23,972	46,801			
TRDGWD-50-32	50	32	70	10	14	3	60	158	189	4PS-25mm	29	18,760	8,400	27,160	49,010			
TRDGWD-50-36	50	36	70	10	14	8	60	158	189	4PS-25mm	29	21,532	8,400	29,932	50,801			
TRDGWD-50-40	50	40	70	10	14	17	60	158	189	4PS-25mm	29	22,880	8,400	31,280	52,016			
TRDGWD-50-44	50	44	70	10	14	22	60	158	189	4PS-25mm	29	25,028	8,400	33,428	53,271			
TRDGWD-50-48	50	48	70	10	14	22	60	158	189	4PS-25mm	29	27,640	8,400	36,040	54,523			
TRDGWD-50-52	50	52	70	10	14	24	60	158	189	4PS-25mm	29	31,436	8,400	39,836	55,979			
TRDGWD-50-56	50	56	70	10	14	28	60	158	189	4PS-25mm	29	33,856	8,400	42,256	57,018			
TRDGWD-50-60	50	60	70	10	14	30	60	158	189	4PS-25mm	29	37,060	8,400	45,460	58,196			
TRDGWD-50-64	50	64	70	9	16	34	58	197	253	4PS-25mm	29	41,184	8,600	49,784	59,647			
TRDGWD-50-68	50	68	70	9	16	34	58	197	253	4PS-25mm	29	43,988	8,600	52,588	60,639			
TRDGWD-50-72	50	72	70	9	16	36	58	197	253	4PS-25mm	29	48,744	8,600	57,344	62,087			
TRDGWD-50-76	50	76	70	9	16	38	58	197	253	4PS-25mm	29	51,812	8,600	60,412	63,085			
TRDGWD-50-80	50	80	70	9	16	40	58	197	253	4PS-25mm	29	54,960	8,600	63,560	64,081			
TRDGWD-50-84	50	84	70	9	16	42	58	197	253	4PS-25mm	29	58,860	8,600	67,460	65,244			
TRDGWD-50-88	50	88	70	9	16	44	58	197	253	4PS-25mm	29	62,200	8,600	70,800	66,251			
TRDGWD-50-92	50	92	70	9	16	46	58	197	253	4PS-25mm	29	65,620	8,600	74,220	67,262			
TRDGWD-50-96	50	96	70	9	16	48	58	197	253	4PS-25mm	29	69,888	8,600	78,488	68,473			
TRDGWD-50-100	50	100	70	9	16	50	58	197	253	4PS-25mm	29	74,500	8,600	83,100	69,758			

DASHED RED LINE INDICATES SINGLE WEB BEAM TO DOUBLE WEB TORSIONAL BOX TRANSITION LINE

CRANE DATA TABLE PART-B

CRANE MODEL #	TROLLEY-HOIST MODEL #	ENDTRUCK MODEL #	HOIST			TROLLEY			BRIDGE		TROLLEY WD (IN)	BRIDGE WD (IN)	STD. POWER (V)	FULL LOAD AMPS 460V	ASCE RAIL
			TRC (IN)	SPD FPM	HP	SPD FPM	HP	SPD FPM	HP						
TRDGWD-50-20	FDH2125H18KN1-4/1F10	DFWLZ400/4000	104.25	8/0.8 TS	28.7/3.6	80 VFC	2 X 2.4	160 VFC	2 X 6.4	12.4	15.8	460	76	80/100	
TRDGWD-50-24	FDH2125H18KN1-4/1F10	DFWLZ400/4000	104.25	8/0.8 TS	28.7/3.6	80 VFC	2 X 2.4	160 VFC	2 X 6.4	12.4	15.8	460	76	80/100	
TRDGWD-50-28	FDH2125H18KN1-4/1F10	DFWLZ400/4000	104.25	8/0.8 TS	28.7/3.6	80 VFC	2 X 2.4	160 VFC	2 X 6.4	12.4	15.8	460	76	80/100	
TRDGWD-50-32	FDH2125H18KN1-4/1F10	DFWLZ400/4000	104.25	8/0.8 TS	28.7/3.6	80 VFC	2 X 2.4	160 VFC	2 X 6.4	12.4	15.8	460	76	80/100	
TRDGWD-50-36	FDH2125H18KN1-4/1F10	DFWLZ400/4000	104.25	8/0.8 TS	28.7/3.6	80 VFC	2 X 2.4	160 VFC	2 X 6.4	12.4	15.8	460	76	80/100	
TRDGWD-50-40	FDH2125H18KN1-4/1F10	DFWLZ400/4000	88.13	8/0.8 TS	28.7/3.6	80 VFC	2 X 2.4	160 VFC	2 X 6.4	12.4	15.8	460	76	80/100	
TRDGWD-50-44	FDH2125H18KN1-4/1F10	DFWLZ400/4000	88.13	8/0.8 TS	28.7/3.6	80 VFC	2 X 2.4	160 VFC	2 X 6.4	12.4	15.8	460	76	80/100	
TRDGWD-50-48	FDH2125H18KN1-4/1F10	DFWLZ400/4000	88.13	8/0.8 TS	28.7/3.6	80 VFC	2 X 2.4	160 VFC	2 X 6.4	12.4	15.8	460	76	80/100	
TRDGWD-50-52	FDH2125H18KN1-4/1F10	DFWLZ400/4000	88.13	8/0.8 TS	28.7/3.6	80 VFC	2 X 2.4	160 VFC	2 X 6.4	12.4	15.8	460	76	80/100	
TRDGWD-50-56	FDH2125H18KN1-4/1F10	DFWLZ400/4000	88.13	8/0.8 TS	28.7/3.6	80 VFC	2 X 2.4	160 VFC	2 X 6.4	12.4	15.8	460	76	80/100	
TRDGWD-50-60	FDH2125H18KN1-4/1F10	DFWLZ400/4000	88.13	8/0.8 TS	28.7/3.6	80 VFC	2 X 2.4	160 VFC	2 X 6.4	12.4	15.8	460	76	80/100	
TRDGWD-50-64	FDH2125H18KN1-4/1F10	DFWL315/5000 8W	110.32	8/0.8 TS	28.7/3.6	80 VFC	2 X 2.4	160 VFC	4 X 4.8	12.4	12.4	460	86	60/80	
TRDGWD-50-68	FDH2125H18KN1-4/1F10	DFWL315/5000 8W	110.32	8/0.8 TS	28.7/3.6	80 VFC	2 X 2.4	160 VFC	4 X 4.8	12.4	12.4	460	86	60/80	
TRDGWD-50-72	FDH2125H18KN1-4/1F10	DFWL315/5000 8W	110.32	8/0.8 TS	28.7/3.6	80 VFC	2 X 2.4	160 VFC	4 X 4.8	12.4	12.4	460	86	60/80	
TRDGWD-50-76	FDH2125H18KN1-4/1F10	DFWL315/5000 8W	110.32	8/0.8 TS	28.7/3.6	80 VFC	2 X 2.4	160 VFC	4 X 4.8	12.4	12.4	460	86	60/80	
TRDGWD-50-80	FDH2125H18KN1-4/1F10	DFWL315/5000 8W	110.32	8/0.8 TS	28.7/3.6	80 VFC	2 X 2.4	160 VFC	4 X 4.8	12.4	12.4	460	86	60/80	
TRDGWD-50-84	FDH2125H18KN1-4/1F10	DFWL315/5000 8W	110.32	8/0.8 TS	28.7/3.6	80 VFC	2 X 2.4	160 VFC	4 X 4.8	12.4	12.4	460	86	60/80	
TRDGWD-50-88	FDH2125H18KN1-4/1F10	DFWL315/5000 8W	110.32	8/0.8 TS	28.7/3.6	80 VFC	2 X 2.4	160 VFC	4 X 4.8	12.4	12.4	460	86	60/80	
TRDGWD-50-92	FDH2125H18KN1-4/1F10	DFWL315/5000 8W	110.32	8/0.8 TS	28.7/3.6	80 VFC	2 X 2.4	160 VFC	4 X 4.8	12.4	12.4	460	86	60/80	
TRDGWD-50-96	FDH2125H18KN1-4/1F10	DFWL315/5000 8W	110.32	8/0.8 TS	28.7/3.6	80 VFC	2 X 2.4	160 VFC	4 X 4.8	12.4	12.4	460	86	60/80	
TRDGWD-50-100	FDH2125H18KN1-4/1F10	DFWL315/5000 8W	110.32	8/0.8 TS	28.7/3.6	80 VFC	2 X 2.4	160 VFC	4 X 4.8	12.4	12.4	460	86	60/80	

(-G) DIMENSION INDICATES HIGH HOOK ELEVATION HIGHER THAN RAIL HEIGHT (RH)

GENERAL NOTES:

DIMENSIONS "RH" AND "TH" ARE SPECIFIED BY CUSTOMER
DIMENSION "A" IS APPROX. AND DOES NOT CONSIDER MAINLINE
WHEEL LOAD "R" DOES NOT INCLUDE IMPACT
CRANE ALSO AVAILABLE AT 230/3/60 AND 575/3/60 POWER

SPEED CODES:
TS TWO SPEED OPERATION WITH SOFT START
VFC VARIABLE SPEED CONTROL 2-STEP INFINITELY VARIABLE
* TROLLEY OPTION AVAILABLE AT 40 FPM, 128FPM, 160 FPM VFC
** BRIDGE OPTION AVAILABLE AT 80 FPM VFC OR 160FPM VFC