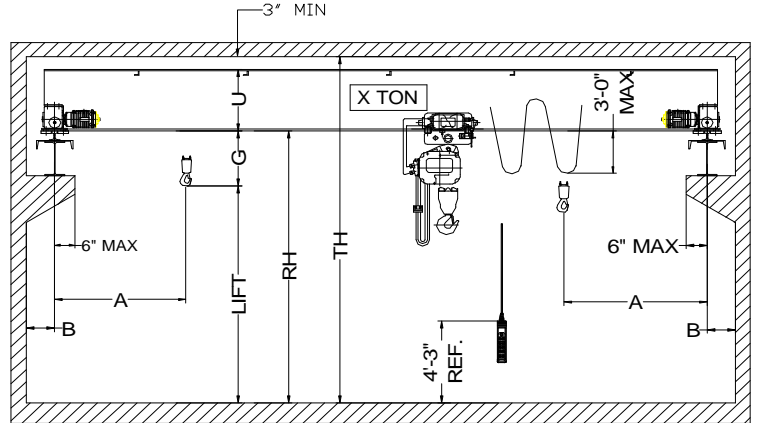
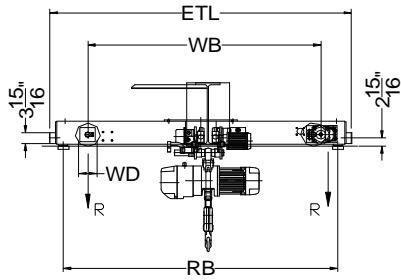
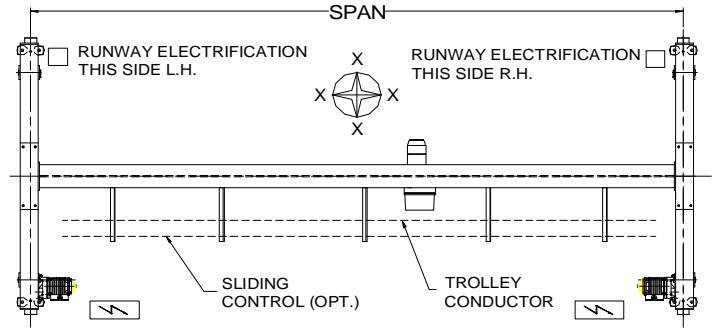




42827 Irwin Drive
 Harrison Twp. MI 48045 USA
 P/ 586-468-0909 F/ 586-468-2711
 E/ info@mccrane.com W/ mccrane.com

**DIMENSIONS & WEIGHTS - TYPE TRSGCH
 3-TON TOP RUNNING SINGLE
 GIRDER CRANE WITH CHAIN HOIST**



HOIST MFG: HARRINGTON TROLLEY MFG: HARRINGTON ENDTRUCK MFG.: HARRINGTON

CRANE DATA TABLE PART-A

CRANE MODEL #	CRANE CAP. U.S. TONS	SPAN FEET	DIMENSIONS								LIFT (FT)	BRIDGE WT. LBS.	TROLLEY WT. LBS.	SHIP WT. LBS.	MAX. WL R (LBS)
			A (IN)	B (IN)	G (IN)	U (IN)	WB (IN)	RB (IN)	ETL (IN)						
TRSGCH-03-18	3	18	28	7	33	13	43	54	62	20	1,380	429	1,809	3,143	
TRSGCH-03-22	3	22	28	7	33	13	43	54	62	20	1,694	429	2,123	3,297	
TRSGCH-03-26	3	26	28	7	33	13	43	54	62	20	2,048	429	2,477	3,438	
TRSGCH-03-30	3	30	28	7	33	15	43	54	62	20	2,532	429	2,961	3,597	
TRSGCH-03-34	3	34	28	7	33	15	43	54	62	20	3,080	429	3,509	3,764	
TRSGCH-03-38	3	38	28	7	33	17	80	91	99	20	3,733	429	4,162	3,950	
TRSGCH-03-42	3	42	28	7	33	19	80	91	99	20	4,443	429	4,872	4,147	
TRSGCH-03-46	3	46	28	7	33	19	80	91	99	20	5,271	429	5,700	4,369	
TRSGCH-03-50	3	50	28	7	33	22	80	91	99	20	6,429	429	6,858	4,672	
TRSGCH-03-54	3	54	28	7	33	22	80	91	99	20	6,897	429	7,326	4,800	
TRSGCH-03-58	3	58	28	7	33	25	80	91	99	20	7,539	429	7,968	4,970	

CRANE DATA TABLE PART-B

CRANE MODEL #	ENDTRUCK MODEL #	TROLLEY-HOIST MODEL #	HOIST SPD FPM	HOIST HP	TROLLEY SPD FPM	TROLLEY HP	BRIDGE SPD FPM	BRIDGE HP.	TROLLEY WD (IN)	BRIDGE WD (IN)	STD. POWER	FULL LOAD AMPS 460V	ASCE RAIL
TRSGCH-03-18	TMS-3-0335	NERM-030CD-L-20	17/3 TS	4.70	40 SS	0.50	80 VFC	2 X 0.33	4.92	6.10	460	14	30/40
TRSGCH-03-22	TMS-3-0335	NERM-030CD-L-20	17/3 TS	4.70	40 SS	0.50	80 VFC	2 X 0.33	4.92	6.10	460	14	30/40
TRSGCH-03-26	TMS-3-0335	NERM-030CD-L-20	17/3 TS	4.70	40 SS	0.50	80 VFC	2 X 0.33	4.92	6.10	460	14	30/40
TRSGCH-03-30	TMS-3-0335	NERM-030CD-L-20	17/3 TS	4.70	40 SS	0.50	80 VFC	2 X 0.33	4.92	6.10	460	14	30/40
TRSGCH-03-34	TMS-3-0335	NERM-030CD-L-20	17/3 TS	4.70	40 SS	0.50	80 VFC	2 X 0.33	4.92	6.10	460	14	30/40
TRSGCH-03-38	TMS-3-0360	NERM-030CD-L-20	17/3 TS	4.70	40 SS	0.50	80 VFC	2 X 0.33	4.92	6.10	460	14	30/40
TRSGCH-03-42	TMS-3-0360	NERM-030CD-L-20	17/3 TS	4.70	40 SS	0.50	80 VFC	2 X 0.33	4.92	6.10	460	14	30/40
TRSGCH-03-46	TMS-3-0360	NERM-030CD-L-20	17/3 TS	4.70	40 SS	0.50	80 VFC	2 X 0.33	4.92	6.10	460	14	30/40
TRSGCH-03-50	TMS-3-0360	NERM-030CD-L-20	17/3 TS	4.70	40 SS	0.50	80 VFC	2 X 0.33	4.92	6.10	460	14	30/40
TRSGCH-03-54	TMS-3-0360	NERM-030CD-L-20	17/3 TS	4.70	40 SS	0.50	80 VFC	2 X 0.33	4.92	6.10	460	14	30/40
TRSGCH-03-58	TMS-3-0360	NERM-030CD-L-20	17/3 TS	4.70	40 SS	0.50	80 VFC	2 X 0.33	4.92	6.10	460	14	30/40

SPEED CODES:	SS	SINGLE SPEED OPERATION WITH SOFT START
	TS	TWO SPEED OPERATION WITH SOFT START
	VFC	VARIABLE SPEED CONTROL 2-STEP INFINITELY VARIABLE

GENERAL NOTES:
 DIMENSIONS "RH" AND "TH" ARE SPECIFIED BY CUSTOMER
 DIMENSION "A" IS APPROX. AND DOES NOT CONSIDER MAINLINE
 WHEEL LOAD "R" DOES NOT INCLUDE IMPACT
 CRANE ALSO AVAILABLE AT 208V/3/60 AND 230/3/60 POWER