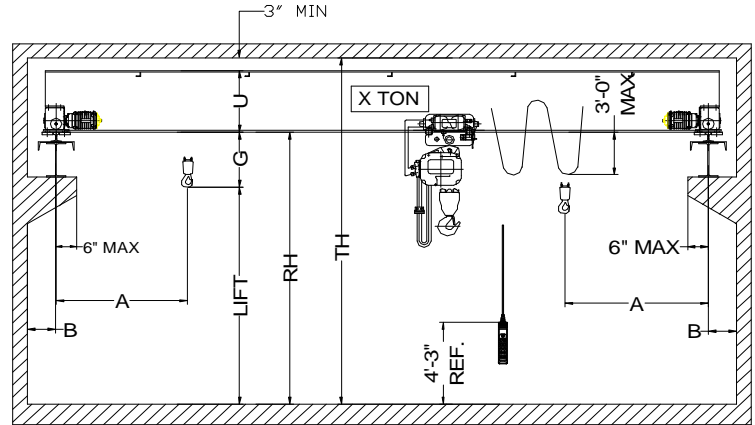
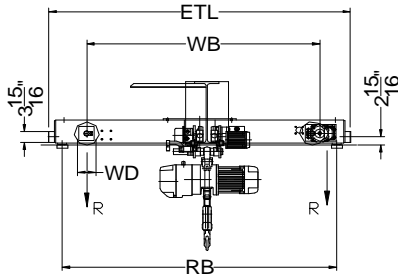
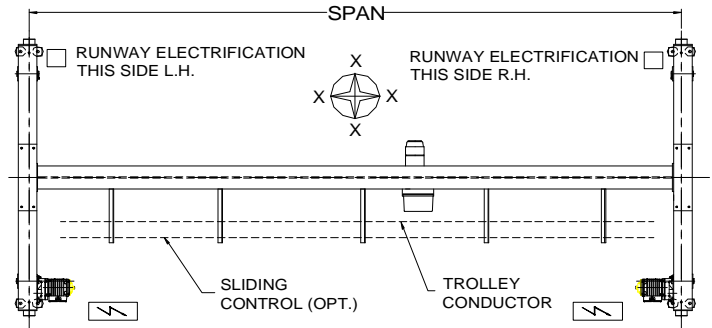




42827 Irwin Drive
 Harrison Twp. MI 48045 USA
 P/ 586-468-0909 F/ 586-468-2711
 E/ info@mccrane.com W/ mccrane.com

**DIMENSIONS & WEIGHTS - TYPE TRSGCH
 2-TON TOP RUNNING SINGLE
 GIRDER CRANE WITH CHAIN HOIST**



HOIST MFG: HARRINGTON TROLLEY MFG: HARRINGTON ENDTRUCK MFG.: HARRINGTON

CRANE DATA TABLE PART-A

CRANE MODEL #	CRANE CAP. U.S. TONS	SPAN FEET	DIMENSIONS								LIFT (FT)	BRIDGE WT. LBS.	TROLLEY WT. LBS.	SHIP WT. LBS.	MAX. WL R (LBS)
			A (IN)	B (IN)	G (IN)	U (IN)	WB (IN)	RB (IN)	ETL (IN)						
TRSGCH-02-18	2	18	24	7	23	11	43	54	62	20	1,272	271	1,543	2,216	
TRSGCH-02-22	2	22	24	7	23	11	43	54	62	20	1,518	271	1,789	2,321	
TRSGCH-02-26	2	26	24	7	23	13	43	54	62	20	1,892	271	2,163	2,444	
TRSGCH-02-30	2	30	24	7	23	13	43	54	62	20	2,112	271	2,383	2,521	
TRSGCH-02-34	2	34	24	7	23	15	43	54	62	20	2,774	271	3,045	2,703	
TRSGCH-02-38	2	38	24	7	23	15	80	91	99	20	3,467	271	3,738	2,890	
TRSGCH-02-42	2	42	24	7	23	15	80	91	99	20	3,771	271	4,042	2,977	
TRSGCH-02-46	2	46	24	7	23	17	80	91	99	20	4,351	271	4,622	3,130	
TRSGCH-02-50	2	50	24	7	23	19	80	91	99	20	5,129	271	5,400	3,332	
TRSGCH-02-54	2	54	24	7	23	19	80	91	99	20	6,627	271	6,898	3,713	
TRSGCH-02-58	2	58	24	7	23	22	80	91	99	20	7,307	271	7,578	3,889	

CRANE DATA TABLE PART-B

CRANE MODEL #	ENDTRUCK MODEL #	TROLLEY-HOIST MODEL #	HOIST SPD FPM	HOIST HP	TROLLEY SPD FPM	TROLLEY HP	BRIDGE SPD FPM	BRIDGE HP.	TROLLEY WD (IN)	BRIDGE WD (IN)	STD. POWER	FULL LOAD AMPS 460V	ASCE RAIL
TRSGCH-02-18	TMS-3-0335	NERM-020LD-L-20	14/2.5 TS	2.40	40 SS	0.50	80 VFC	2 X 0.33	4.33	6.10	460	9	30/40
TRSGCH-02-22	TMS-3-0335	NERM-020LD-L-20	14/2.5 TS	2.40	40 SS	0.50	80 VFC	2 X 0.33	4.33	6.10	460	9	30/40
TRSGCH-02-26	TMS-3-0335	NERM-020LD-L-20	14/2.5 TS	2.40	40 SS	0.50	80 VFC	2 X 0.33	4.33	6.10	460	9	30/40
TRSGCH-02-30	TMS-3-0335	NERM-020LD-L-20	14/2.5 TS	2.40	40 SS	0.50	80 VFC	2 X 0.33	4.33	6.10	460	9	30/40
TRSGCH-02-34	TMS-3-0335	NERM-020LD-L-20	14/2.5 TS	2.40	40 SS	0.50	80 VFC	2 X 0.33	4.33	6.10	460	9	30/40
TRSGCH-02-38	TMS-3-0360	NERM-020LD-L-20	14/2.5 TS	2.40	40 SS	0.50	80 VFC	2 X 0.33	4.33	6.10	460	9	30/40
TRSGCH-02-42	TMS-3-0360	NERM-020LD-L-20	14/2.5 TS	2.40	40 SS	0.50	80 VFC	2 X 0.33	4.33	6.10	460	9	30/40
TRSGCH-02-46	TMS-3-0360	NERM-020LD-L-20	14/2.5 TS	2.40	40 SS	0.50	80 VFC	2 X 0.33	4.33	6.10	460	9	30/40
TRSGCH-02-50	TMS-3-0360	NERM-020LD-L-20	14/2.5 TS	2.40	40 SS	0.50	80 VFC	2 X 0.33	4.33	6.10	460	9	30/40
TRSGCH-02-54	TMS-3-0360	NERM-020LD-L-20	14/2.5 TS	2.40	40 SS	0.50	80 VFC	2 X 0.33	4.33	6.10	460	9	30/40
TRSGCH-02-58	TMS-3-0360	NERM-020LD-L-20	14/2.5 TS	2.40	40 SS	0.50	80 VFC	2 X 0.33	4.33	6.10	460	9	30/40

SPEED CODES:	SS	SINGLE SPEED OPERATION WITH SOFT START
	TS	TWO SPEED OPERATION WITH SOFT START
	VFC	VARIABLE SPEED CONTROL 2-STEP INFINITELY VARIABLE

GENERAL NOTES:
 DIMENSIONS "RH" AND "TH" ARE SPECIFIED BY CUSTOMER
 DIMENSION "A" IS APPROX. AND DOES NOT CONSIDER MAINLINE
 WHEEL LOAD "R" DOES NOT INCLUDE IMPACT
 CRANE ALSO AVAILABLE AT 208V/3/60 AND 230/3/60 POWER