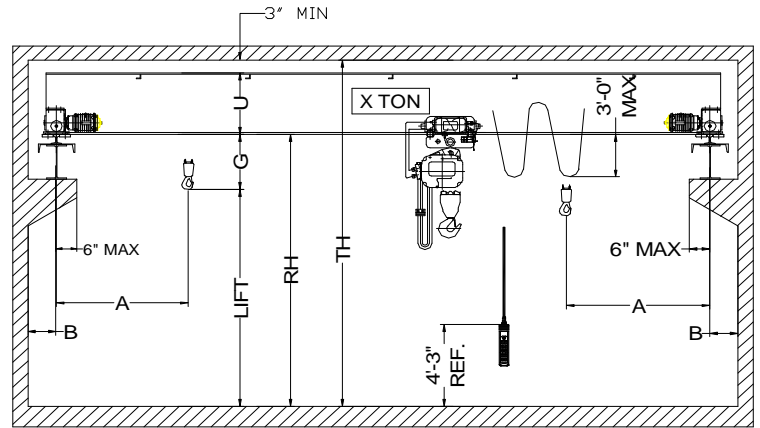
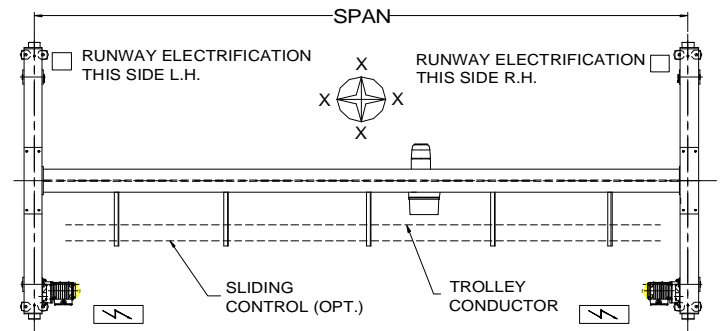
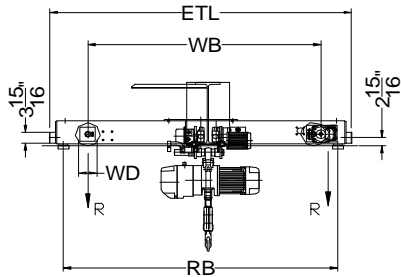




42827 Irwin Drive
 Harrison Twp. MI 48045 USA
 P/ 586-468-0909 F/ 586-468-2711
 E/ info@mccrane.com W/ mccrane.com

**DIMENSIONS & WEIGHTS - TYPE TRSGCH
 1-TON TOP RUNNING SINGLE
 GIRDER CRANE WITH CHAIN HOIST**



HOIST MFG: HARRINGTON TROLLEY MFG: HARRINGTON ENDTRUCK MFG.: HARRINGTON

CRANE DATA TABLE PART-A

CRANE MODEL #	CRANE CAP. U.S. TONS	SPAN FEET	DIMENSIONS								LIFT (FT)	BRIDGE WT. LBS.	TROLLEY WT. LBS.	SHIP WT. LBS.	MAX. WL R (LBS)
			A (IN)	B (IN)	G (IN)	U (IN)	WB (IN)	RB (IN)	ETL (IN)						
TRSGCH-01-18	1	18	24	7	18	11	43	53	61	20	1,098	186	1,284	1,246	
TRSGCH-01-22	1	22	24	7	18	11	43	53	61	20	1,278	186	1,464	1,313	
TRSGCH-01-26	1	26	24	7	18	11	43	53	61	20	1,458	186	1,644	1,373	
TRSGCH-01-30	1	30	24	7	18	11	43	53	61	20	1,728	186	1,914	1,452	
TRSGCH-01-34	1	34	24	7	18	13	43	53	61	20	2,158	186	2,344	1,568	
TRSGCH-01-38	1	38	24	7	18	15	80	90	98	20	2,588	186	2,774	1,682	
TRSGCH-01-42	1	42	24	7	18	15	80	90	98	20	3,576	186	3,762	1,935	
TRSGCH-01-46	1	46	24	7	18	15	80	90	98	20	3,880	186	4,066	2,015	
TRSGCH-01-50	1	50	24	7	18	17	80	90	98	20	4,484	186	4,670	2,170	
TRSGCH-01-54	1	54	24	7	18	19	80	90	98	20	5,298	186	5,484	2,377	
TRSGCH-01-58	1	58	24	7	18	19	80	90	98	20	6,242	186	6,428	2,616	

CRANE DATA TABLE PART-B

CRANE MODEL #	ENDTRUCK MODEL #	TROLLEY-HOIST MODEL #	HOIST SPD FPM	HOIST HP	TROLLEY SPD FPM	TROLLEY HP	BRIDGE SPD FPM	BRIDGE HP.	TROLLEY WD (IN)	BRIDGE WD (IN)	STD. POWER	FULL LOAD AMPS 460V	ASCE RAIL
TRSGCH-01-18	TMS-3-0135	NERM-010LD-L-20	14/2.5 TS	1.20	40 SS	0.50	80 VFC	2 X 0.33	3.74	3.74	460	7	30/40
TRSGCH-01-22	TMS-3-0135	NERM-010LD-L-20	14/2.5 TS	1.20	40 SS	0.50	80 VFC	2 X 0.33	3.74	3.74	460	7	30/40
TRSGCH-01-26	TMS-3-0135	NERM-010LD-L-20	14/2.5 TS	1.20	40 SS	0.50	80 VFC	2 X 0.33	3.74	3.74	460	7	30/40
TRSGCH-01-30	TMS-3-0135	NERM-010LD-L-20	14/2.5 TS	1.20	40 SS	0.50	80 VFC	2 X 0.33	3.74	3.74	460	7	30/40
TRSGCH-01-34	TMS-3-0135	NERM-010LD-L-20	14/2.5 TS	1.20	40 SS	0.50	80 VFC	2 X 0.33	3.74	3.74	460	7	30/40
TRSGCH-01-38	TMS-3-0160	NERM-010LD-L-20	14/2.5 TS	1.20	40 SS	0.50	80 VFC	2 X 0.33	3.74	3.74	460	7	30/40
TRSGCH-01-42	TMS-3-0160	NERM-010LD-L-20	14/2.5 TS	1.20	40 SS	0.50	80 VFC	2 X 0.33	3.74	3.74	460	7	30/40
TRSGCH-01-46	TMS-3-0160	NERM-010LD-L-20	14/2.5 TS	1.20	40 SS	0.50	80 VFC	2 X 0.33	3.74	3.74	460	7	30/40
TRSGCH-01-50	TMS-3-0160	NERM-010LD-L-20	14/2.5 TS	1.20	40 SS	0.50	80 VFC	2 X 0.33	3.74	3.74	460	7	30/40
TRSGCH-01-54	TMS-3-0160	NERM-010LD-L-20	14/2.5 TS	1.20	40 SS	0.50	80 VFC	2 X 0.33	3.74	3.74	460	7	30/40
TRSGCH-01-58	TMS-3-0160	NERM-010LD-L-20	14/2.5 TS	1.20	40 SS	0.50	80 VFC	2 X 0.33	3.74	3.74	460	7	30/40

SPEED CODES:	SS	SINGLE SPEED OPERATION WITH SOFT START
	TS	TWO SPEED OPERATION WITH SOFT START
	VFC	VARIABLE SPEED CONTROL 2-STEP INFINITELY VARIABLE

GENERAL NOTES:
 DIMENSIONS "RH" AND "TH" ARE SPECIFIED BY CUSTOMER
 DIMENSION "A" IS APPROX. AND DOES NOT CONSIDER MAINLINE
 WHEEL "R" DOES NOT INCLUDE IMPACT
 CRANE ALSO AVAILABLE AT 208V/3/60 AND 230/3/60 POWER