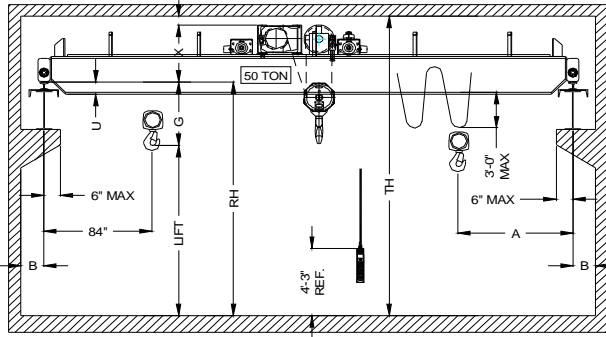
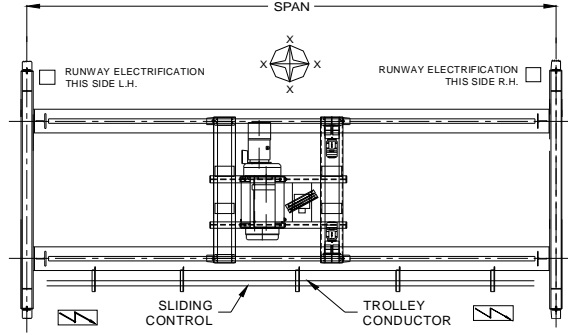
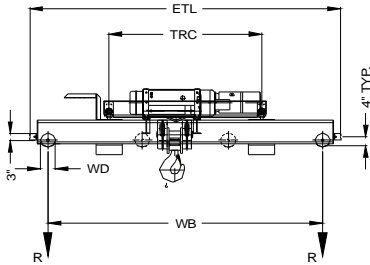




42827 Irwin Drive
 Harrison Twp. MI 48045 USA
 P/ 586-468-0909 F/ 586-468-2711
 E/ info@mccrane.com W/ mccrane.com

DIMENSIONS & WEIGHTS - TYPE TRDGWR
50-TON TOP RUNNING DOUBLE
GIRDER CRANE WITH WIRE ROPE HOIST
CRANE DATA FOR CLASS-C SERVICE ONLY



HOIST MFG: STAHL TROLLEY MFG: MCC/DEMAG ENDTRUCK MFG.: DEMAG

CRANE DATA TABLE PART-A

CRANE MODEL #	CRANE CAP. U.S. TONS	SPAN FEET	DIMENSIONS										BRIDGE WT. LBS.	TROLLEY WT. LBS.	SHIP WT. LBS.	MAX. WL R (LBS)
			A (IN)	B (IN)	G (IN)	U (IN)	X (IN)	WB (IN)	ETL (IN)	REEVING	LIFT (FT)					
TRDGWR-50-20	50	20	66	9	66	3	54	158	189	6PS-25mm	39	11,224	10,190	21,414	42,750	
TRDGWR-50-24	50	24	66	9	66	3	54	158	189	6PS-25mm	39	13,092	10,190	23,282	45,742	
TRDGWR-50-28	50	28	66	9	66	6	54	158	189	6PS-25mm	39	15,256	10,190	25,446	48,087	
TRDGWR-50-32	50	32	66	9	66	6	54	158	189	6PS-25mm	39	18,444	10,190	28,634	50,237	
TRDGWR-50-36	50	36	66	9	66	11	54	158	189	6PS-25mm	39	21,216	10,190	31,406	51,982	
TRDGWR-50-40	50	40	66	9	66	23	54	158	189	6PS-25mm	39	22,564	10,190	32,754	53,160	
TRDGWR-50-44	50	44	66	9	66	25	54	158	189	6PS-25mm	39	24,712	10,190	34,902	54,386	
TRDGWR-50-48	50	48	66	9	66	29	54	158	189	6PS-25mm	39	27,324	10,190	37,514	55,613	
TRDGWR-50-52	50	52	66	9	66	33	54	158	189	6PS-25mm	39	31,120	10,190	41,310	57,048	
TRDGWR-50-56	50	56	66	9	66	35	54	158	189	6PS-25mm	39	33,540	10,190	43,730	58,069	
TRDGWR-50-60	50	60	66	9	66	39	54	158	189	6PS-25mm	39	36,744	10,190	46,934	59,231	
TRDGWR-50-64	50	64	66	9	68	43	52	197	253	6PS-25mm	39	40,988	10,590	51,578	60,790	
TRDGWR-50-68	50	68	66	9	68	45	52	197	253	6PS-25mm	39	43,792	10,590	54,382	61,771	
TRDGWR-50-72	50	72	66	9	68	49	52	197	253	6PS-25mm	39	48,548	10,590	59,138	63,208	
TRDGWR-50-76	50	76	66	9	68	51	52	197	253	6PS-25mm	39	51,616	10,590	62,206	64,197	
TRDGWR-50-80	50	80	66	9	68	53	52	197	253	6PS-25mm	39	54,764	10,590	65,354	65,184	
TRDGWR-50-84	50	84	66	9	68	57	52	197	253	6PS-25mm	39	58,664	10,590	69,254	66,340	
TRDGWR-50-88	50	88	66	9	68	59	52	197	253	6PS-25mm	39	62,004	10,590	72,594	67,340	
TRDGWR-50-92	50	92	66	9	68	61	52	197	253	6PS-25mm	39	65,424	10,590	76,014	68,345	
TRDGWR-50-96	50	96	66	9	68	65	52	197	253	6PS-25mm	39	69,692	10,590	80,282	69,550	
TRDGWR-50-100	50	100	66	9	68	65	52	197	253	6PS-25mm	39	74,304	10,590	84,894	70,830	

DASHED RED LINE INDICATES SINGLE WEB BEAM TO DOUBLE WEB TORSIONAL BOX TRANSITION LINE

CRANE DATA TABLE PART-B

CRANE MODEL #	TROLLEY-HOIST MODEL #	ENDTRUCK MODEL #	TRC (IN)	HOIST SPD FPM	HOIST HP	TROLLEY SPD FPM	TROLLEY HP	BRIDGE SPD FPM	BRIDGE HP.	TROLLEY WD (IN)	BRIDGE WD (IN)	STD. POWER (V)	FULL LOAD AMPS 460V	ASCE RAIL
TRDGWR-50-20	AS7080-19-6/1L3	DFWLZ400/4000	88.13	10/1.6 TS	39.4/6.3	80 VFC	2 X 2.4	125 VFC	2 X 6.4	12.41	16	460	86	80/100
TRDGWR-50-24	AS7080-19-6/1L3	DFWLZ400/4000	88.13	10/1.6 TS	39.4/6.3	80 VFC	2 X 2.4	125 VFC	2 X 6.4	12.41	16	460	86	80/100
TRDGWR-50-28	AS7080-19-6/1L3	DFWLZ400/4000	88.13	10/1.6 TS	39.4/6.3	80 VFC	2 X 2.4	125 VFC	2 X 6.4	12.41	16	460	86	80/100
TRDGWR-50-32	AS7080-19-6/1L3	DFWLZ400/4000	88.13	10/1.6 TS	39.4/6.3	80 VFC	2 X 2.4	125 VFC	2 X 6.4	12.41	16	460	86	80/100
TRDGWR-50-36	AS7080-19-6/1L3	DFWLZ400/4000	88.13	10/1.6 TS	39.4/6.3	80 VFC	2 X 2.4	125 VFC	2 X 6.4	12.41	16	460	86	80/100
TRDGWR-50-40	AS7080-19-6/1L3	DFWLZ400/4000	88.13	10/1.6 TS	39.4/6.3	80 VFC	2 X 2.4	125 VFC	2 X 6.4	12.41	16	460	86	80/100
TRDGWR-50-44	AS7080-19-6/1L3	DFWLZ400/4000	88.13	10/1.6 TS	39.4/6.3	80 VFC	2 X 2.4	125 VFC	2 X 6.4	12.41	16	460	86	80/100
TRDGWR-50-48	AS7080-19-6/1L3	DFWLZ400/4000	88.13	10/1.6 TS	39.4/6.3	80 VFC	2 X 2.4	125 VFC	2 X 6.4	12.41	16	460	86	80/100
TRDGWR-50-52	AS7080-19-6/1L3	DFWLZ400/4000	88.13	10/1.6 TS	39.4/6.3	80 VFC	2 X 2.4	125 VFC	2 X 6.4	12.41	16	460	86	80/100
TRDGWR-50-56	AS7080-19-6/1L3	DFWLZ400/4000	88.13	10/1.6 TS	39.4/6.3	80 VFC	2 X 2.4	125 VFC	2 X 6.4	12.41	16	460	86	80/100
TRDGWR-50-60	AS7080-19-6/1L3	DFWLZ400/4000	88.13	10/1.6 TS	39.4/6.3	80 VFC	2 X 2.4	125 VFC	2 X 6.4	12.41	16	460	86	80/100
TRDGWR-50-64	AS7080-19-6/1L3	DFWLT315/5000 8W	110.32	10/1.6 TS	39.4/6.3	80 VFC	2 X 2.4	125 VFC	4 X 4.8	12.41	12	460	96	60/80
TRDGWR-50-68	AS7080-19-6/1L3	DFWLT315/5000 8W	110.32	10/1.6 TS	39.4/6.3	80 VFC	2 X 2.4	125 VFC	4 X 4.8	12.41	12	460	96	60/80
TRDGWR-50-72	AS7080-19-6/1L3	DFWLT315/5000 8W	110.32	10/1.6 TS	39.4/6.3	80 VFC	2 X 2.4	125 VFC	4 X 4.8	12.41	12	460	96	60/80
TRDGWR-50-76	AS7080-19-6/1L3	DFWLT315/5000 8W	110.32	10/1.6 TS	39.4/6.3	80 VFC	2 X 2.4	125 VFC	4 X 4.8	12.41	12	460	96	60/80
TRDGWR-50-80	AS7080-19-6/1L3	DFWLT315/5000 8W	110.32	10/1.6 TS	39.4/6.3	80 VFC	2 X 2.4	125 VFC	4 X 4.8	12.41	12	460	96	60/80
TRDGWR-50-84	AS7080-19-6/1L3	DFWLT315/5000 8W	110.32	10/1.6 TS	39.4/6.3	80 VFC	2 X 2.4	125 VFC	4 X 4.8	12.41	12	460	96	60/80
TRDGWR-50-88	AS7080-19-6/1L3	DFWLT315/5000 8W	110.32	10/1.6 TS	39.4/6.3	80 VFC	2 X 2.4	125 VFC	4 X 4.8	12.41	12	460	96	60/80
TRDGWR-50-92	AS7080-19-6/1L3	DFWLT315/5000 8W	110.32	10/1.6 TS	39.4/6.3	80 VFC	2 X 2.4	125 VFC	4 X 4.8	12.41	12	460	96	60/80
TRDGWR-50-96	AS7080-19-6/1L3	DFWLT315/5000 8W	110.32	10/1.6 TS	39.4/6.3	80 VFC	2 X 2.4	125 VFC	4 X 4.8	12.41	12	460	96	60/80
TRDGWR-50-100	AS7080-19-6/1L3	DFWLT315/5000 8W	110.32	10/1.6 TS	39.4/6.3	80 VFC	2 X 2.4	125 VFC	4 X 4.8	12.41	12	460	96	60/80

(-G) DIMENSION INDICATES HIGH HOOK ELEVATION HIGHER THAN RAIL HEIGHT (RH)

SPEED CODES: TS TWO SPEED OPERATION WITH SOFT START
 VFC VARIABLE SPEED CONTROL 2-STEP INFINITELY VARIABLE

* TROLLEY OPTION AVAILABLE AT 40 FPM, 128FPM, 160 FPM VFC

** BRIDGE OPTION AVAILABLE AT 80 FPM VFC OR 160FPM VFC

GENERAL NOTES:

DIMENSIONS "RH" AND "TH" ARE SPECIFIED BY CUSTOMER
 DIMENSION "A" IS APPROX. AND DOES NOT CONSIDER MAINLINE
 WHEEL LOAD "R" DOES NOT INCLUDE IMPACT
 CRANE ALSO AVAILABLE AT 230/3/60 AND 575/3/60 POWER