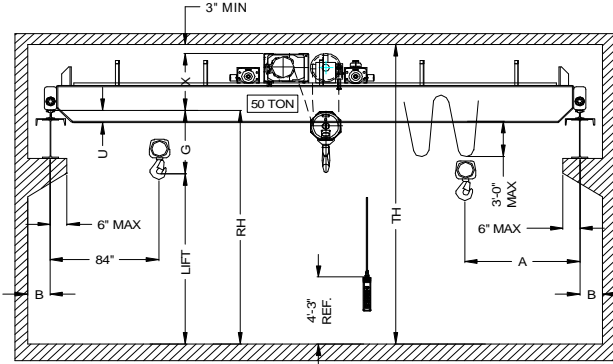
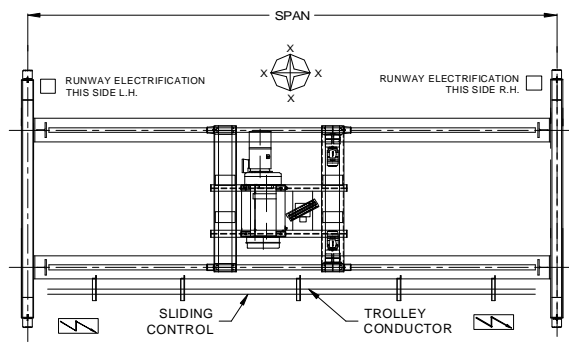
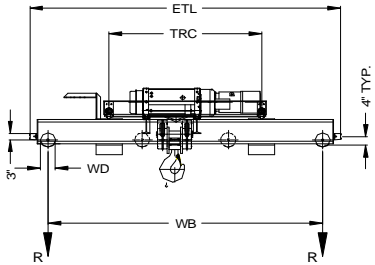




42827 Irwin Drive
 Harrison Twp. MI 48045 USA
 P/ 586-468-0909 F/ 586-468-2711
 E/ info@mccrane.com W/ mccrane.com

DIMENSIONS & WEIGHTS - TYPE TRDGWR
50-TON TOP RUNNING DOUBLE
GIRDER CRANE WITH WIRE ROPE HOIST
CRANE DATA FOR CLASS-C SERVICE ONLY



HOIST MFG: STAHL TROLLEY MFG: MCC/DEMAG ENDTRUCK MFG.: DEMAG

CRANE DATA TABLE PART-A

CRANE MODEL #	CRANE CAP. U.S. TONS	SPAN FEET	DIMENSIONS								REEVING	LIFT (FT)	BRIDGE WT. LBS.	TROLLEY WT. LBS.	SHIP WT. LBS.	MAX. WL R (LBS)
			A (IN)	B (IN)	G (IN)	U (IN)	X (IN)	WB (IN)	ETL (IN)							
TRDGWR-50-20	50	20	66	9	66	3	54	158	189	6PS-25mm	39	11,224	10,190	21,414	42,750	
TRDGWR-50-24	50	24	66	9	66	3	54	158	189	6PS-25mm	39	13,092	10,190	23,282	45,742	
TRDGWR-50-28	50	28	66	9	66	6	54	158	189	6PS-25mm	39	15,256	10,190	25,446	48,087	
TRDGWR-50-32	50	32	66	9	66	6	54	158	189	6PS-25mm	39	18,444	10,190	28,634	50,237	
TRDGWR-50-36	50	36	66	9	66	11	54	158	189	6PS-25mm	39	21,216	10,190	31,406	51,982	
TRDGWR-50-40	50	40	66	9	66	20	54	158	189	6PS-25mm	39	19,764	10,190	29,954	52,460	
TRDGWR-50-44	50	44	66	9	66	25	54	158	189	6PS-25mm	39	22,072	10,190	32,262	53,726	
TRDGWR-50-48	50	48	66	9	66	25	54	158	189	6PS-25mm	39	24,924	10,190	35,114	55,013	
TRDGWR-50-52	50	52	66	9	66	27	54	158	189	6PS-25mm	39	26,960	10,190	37,150	56,008	
TRDGWR-50-56	50	56	66	9	66	31	54	158	189	6PS-25mm	39	29,508	10,190	39,698	57,061	
TRDGWR-50-60	50	60	66	9	66	33	54	158	189	6PS-25mm	39	32,424	10,190	42,614	58,151	
TRDGWR-50-64	50	64	66	9	68	37	52	197	253	6PS-25mm	39	36,124	10,590	46,714	59,574	
TRDGWR-50-68	50	68	66	9	68	37	52	197	253	6PS-25mm	39	39,440	10,590	50,300	60,683	
TRDGWR-50-72	50	72	66	9	68	39	52	197	253	6PS-25mm	39	40,772	10,590	51,362	61,264	
TRDGWR-50-76	50	76	66	9	68	41	52	197	253	6PS-25mm	39	44,168	10,590	54,758	62,335	
TRDGWR-50-80	50	80	66	9	68	43	52	197	253	6PS-25mm	39	48,364	10,590	58,954	63,584	
TRDGWR-50-84	50	84	66	9	68	45	52	197	253	6PS-25mm	39	50,768	10,590	61,358	64,366	
TRDGWR-50-88	50	88	66	9	68	47	52	197	253	6PS-25mm	39	52,676	10,590	63,266	65,008	
TRDGWR-50-92	50	92	66	9	68	49	52	197	253	6PS-25mm	39	56,408	10,590	66,998	66,091	
TRDGWR-50-96	50	96	66	9	68	51	52	197	253	6PS-25mm	39	60,284	10,590	70,874	67,198	
TRDGWR-50-100	50	100	66	9	68	53	52	197	253	6PS-25mm	39	64,104	10,590	74,694	68,280	

DASHED RED LINE INDICATES SINGLE WEB BEAM TO DOUBLE WEB TORSIONAL BOX TRANSITION LINE

CRANE DATA TABLE PART-B

CRANE MODEL #	TROLLEY-HOIST MODEL #	ENDTRUCK MODEL #	TRC (IN)	HOIST SPD FPM	HOIST HP	TROLLEY SPD FPM	TROLLEY HP	BRIDGE SPD FPM	BRIDGE HP.	TROLLEY WD (IN)	BRIDGE WD (IN)	STD. POWER (V)	FULL LOAD AMPS 460V	ASCE RAIL
TRDGWR-50-20	AS7080-19-6/1L3	DFWLZ400/4000	88.13	10/1.6 TS	39.4/6.3	80 VFC	2 X 2.4	125 VFC	2 X 6.4	12.41	16	460	86	80/100
TRDGWR-50-24	AS7080-19-6/1L3	DFWLZ400/4000	88.13	10/1.6 TS	39.4/6.3	80 VFC	2 X 2.4	125 VFC	2 X 6.4	12.41	16	460	86	80/100
TRDGWR-50-28	AS7080-19-6/1L3	DFWLZ400/4000	88.13	10/1.6 TS	39.4/6.3	80 VFC	2 X 2.4	125 VFC	2 X 6.4	12.41	16	460	86	80/100
TRDGWR-50-32	AS7080-19-6/1L3	DFWLZ400/4000	88.13	10/1.6 TS	39.4/6.3	80 VFC	2 X 2.4	125 VFC	2 X 6.4	12.41	16	460	86	80/100
TRDGWR-50-36	AS7080-19-6/1L3	DFWLZ400/4000	88.13	10/1.6 TS	39.4/6.3	80 VFC	2 X 2.4	125 VFC	2 X 6.4	12.41	16	460	86	80/100
TRDGWR-50-40	AS7080-19-6/1L3	DFWLZ400/4000	88.13	10/1.6 TS	39.4/6.3	80 VFC	2 X 2.4	125 VFC	2 X 6.4	12.41	16	460	86	80/100
TRDGWR-50-44	AS7080-19-6/1L3	DFWLZ400/4000	88.13	10/1.6 TS	39.4/6.3	80 VFC	2 X 2.4	125 VFC	2 X 6.4	12.41	16	460	86	80/100
TRDGWR-50-48	AS7080-19-6/1L3	DFWLZ400/4000	88.13	10/1.6 TS	39.4/6.3	80 VFC	2 X 2.4	125 VFC	2 X 6.4	12.41	16	460	86	80/100
TRDGWR-50-52	AS7080-19-6/1L3	DFWLZ400/4000	88.13	10/1.6 TS	39.4/6.3	80 VFC	2 X 2.4	125 VFC	2 X 6.4	12.41	16	460	86	80/100
TRDGWR-50-56	AS7080-19-6/1L3	DFWLZ400/4000	88.13	10/1.6 TS	39.4/6.3	80 VFC	2 X 2.4	125 VFC	2 X 6.4	12.41	16	460	86	80/100
TRDGWR-50-60	AS7080-19-6/1L3	DFWLZ400/4000	88.13	10/1.6 TS	39.4/6.3	80 VFC	2 X 2.4	125 VFC	2 X 6.4	12.41	16	460	86	80/100
TRDGWR-50-64	AS7080-19-6/1L3	DFWLT315/5000 8W	110.32	10/1.6 TS	39.4/6.3	80 VFC	2 X 2.4	125 VFC	4 X 4.8	12.41	12	460	96	60/80
TRDGWR-50-68	AS7080-19-6/1L3	DFWLT315/5000 8W	110.32	10/1.6 TS	39.4/6.3	80 VFC	2 X 2.4	125 VFC	4 X 4.8	12.41	12	460	96	60/80
TRDGWR-50-72	AS7080-19-6/1L3	DFWLT315/5000 8W	110.32	10/1.6 TS	39.4/6.3	80 VFC	2 X 2.4	125 VFC	4 X 4.8	12.41	12	460	96	60/80
TRDGWR-50-76	AS7080-19-6/1L3	DFWLT315/5000 8W	110.32	10/1.6 TS	39.4/6.3	80 VFC	2 X 2.4	125 VFC	4 X 4.8	12.41	12	460	96	60/80
TRDGWR-50-80	AS7080-19-6/1L3	DFWLT315/5000 8W	110.32	10/1.6 TS	39.4/6.3	80 VFC	2 X 2.4	125 VFC	4 X 4.8	12.41	12	460	96	60/80
TRDGWR-50-84	AS7080-19-6/1L3	DFWLT315/5000 8W	110.32	10/1.6 TS	39.4/6.3	80 VFC	2 X 2.4	125 VFC	4 X 4.8	12.41	12	460	96	60/80
TRDGWR-50-88	AS7080-19-6/1L3	DFWLT315/5000 8W	110.32	10/1.6 TS	39.4/6.3	80 VFC	2 X 2.4	125 VFC	4 X 4.8	12.41	12	460	96	60/80
TRDGWR-50-92	AS7080-19-6/1L3	DFWLT315/5000 8W	110.32	10/1.6 TS	39.4/6.3	80 VFC	2 X 2.4	125 VFC	4 X 4.8	12.41	12	460	96	60/80
TRDGWR-50-96	AS7080-19-6/1L3	DFWLT315/5000 8W	110.32	10/1.6 TS	39.4/6.3	80 VFC	2 X 2.4	125 VFC	4 X 4.8	12.41	12	460	96	60/80
TRDGWR-50-100	AS7080-19-6/1L3	DFWLT315/5000 8W	110.32	10/1.6 TS	39.4/6.3	80 VFC	2 X 2.4	125 VFC	4 X 4.8	12.41	12	460	96	60/80

(-G) DIMENSION INDICATES HIGH HOOK ELEVATION HIGHER THAN RAIL HEIGHT (RH)

SPEED CODES: TS TWO SPEED OPERATION WITH SOFT START
 VFC VARIABLE SPEED CONTROL 2-STEP INFINITELY VARIABLE

* TROLLEY OPTION AVAILABLE AT 40 FPM, 128FPM, 160 FPM VFC

** BRIDGE OPTION AVAILABLE AT 80 FPM VFC OR 160FPM VFC

GENERAL NOTES:

DIMENSIONS "RH" AND "TH" ARE SPECIFIED BY CUSTOMER
 DIMENSION "A" IS APPROX. AND DOES NOT CONSIDER MAINLINE
 WHEEL LOAD "R" DOES NOT INCLUDE IMPACT
 CRANE ALSO AVAILABLE AT 230/3/60 AND 575/3/60 POWER