

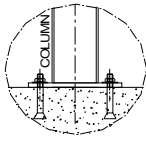
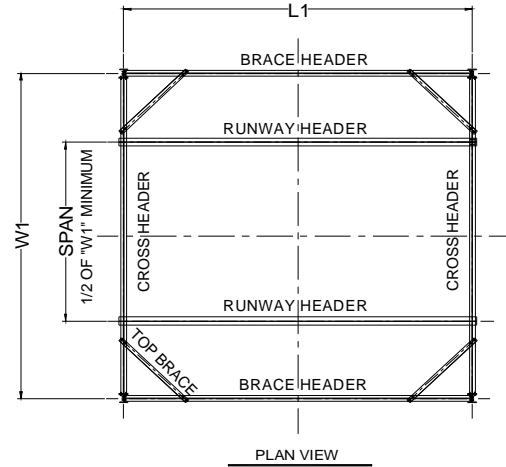


42827 Irwin Drive  
 Harrison Twp. MI 48045 USA  
 P/ 586-468-0909 F/ 586-468-2711  
 E/ info@mccrane.com W/ mccrane.com

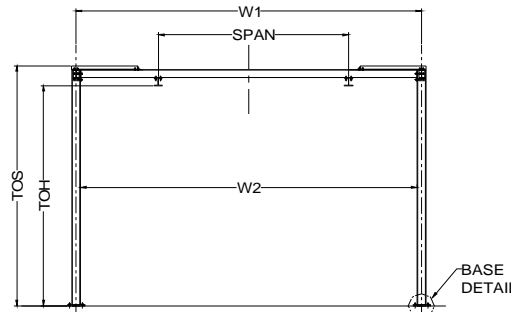
**DIMENSIONS & WEIGHTS - TYPE FSET**  
**2,000# CAPACITY FREE STANDING RUNWAY**  
**STRUCTURE FOR HAND OPERATED CRANE**

**GENERAL NOTES:**

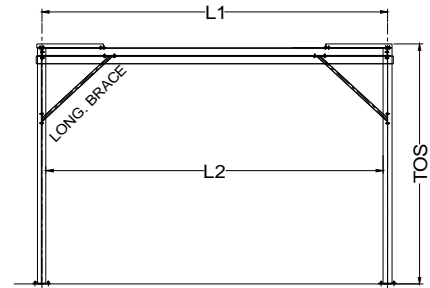
- System capacity shown is for the sum of live loads and dead loads suspended from bridge. Structures listed are for hand operated enclosed track crane or monorail systems only.
- Capacities shown are for One-(2) runway rail or One (1) monorail system only.
- Crane spans for runway systems must equal 1/2 the system width or greater (within limits of structure width). Loads must be kept within footprint of structure.
- For non-standard lengths, widths, or heights; use next larger structure and order with exact dimensions required.
- Structure kit include: ACAD system installation drawing specific for order, all structural steel work per attached concept drawing, bolting hardware, anchoring hardware for 8" minimum floor thickness, and gray primer paint finish.



BASE DETAIL



END VIEW



LONGITUDINAL VIEW

**2,000# CAPACITY / 15 FT (TOS) SYSTEM HEIGHT**

**2,000# CAPACITY / 20 FT (TOS) SYSTEM HEIGHT**

ITEM #	SYSTEM I.D. NUMBER	LENGTH L1 (FT)	WIDTH W1 (FT)	HEIGHT TOS (FT)	HEIGHT TOH (FT)	SYSTEM WT. (LBS)	LENGTH L2 (FT)	WIDTH W2 (FT)	# COL'S. TOTAL
1	FSET-2000-09-10-15	9.00	10.00	15.00	13.75	2,023	8.5	9.5	4
2	FSET-2000-19-10-15	19.00	10.00	15.00	13.75	2,623	18.5	9.5	4
3	FSET-2000-29-10-15	29.00	10.00	15.00	13.75	3,571	28.5	9.5	4
4	FSET-2000-39-10-15	39.00	10.00	15.00	13.75	4,655	38.5	9.5	6
5	FSET-2000-49-10-15	49.00	10.00	15.00	13.75	5,843	48.5	9.5	6
6	FSET-2000-59-10-15	59.00	10.00	15.00	13.75	6,563	58.5	9.5	6
7	FSET-2000-69-10-15	69.00	10.00	15.00	13.75	8,115	68.5	9.5	8
8	FSET-2000-79-10-15	79.00	10.00	15.00	13.75	8,835	78.5	9.5	8
9	FSET-2000-89-10-15	89.00	10.00	15.00	13.75	9,555	88.5	9.5	8
10	FSET-2000-99-10-15	99.00	10.00	15.00	13.75	11,107	98.5	9.5	10
11	FSET-2000-09-20-15	9.00	20.00	15.00	13.75	2,443	8.5	19.5	4
12	FSET-2000-19-20-15	19.00	20.00	15.00	13.75	3,043	18.5	19.5	4
13	FSET-2000-29-20-15	29.00	20.00	15.00	13.75	3,991	28.5	19.5	4
14	FSET-2000-39-20-15	39.00	20.00	15.00	13.75	5,285	38.5	19.5	6
15	FSET-2000-49-20-15	49.00	20.00	15.00	13.75	6,473	48.5	19.5	6
16	FSET-2000-59-20-15	59.00	20.00	15.00	13.75	7,193	58.5	19.5	6
17	FSET-2000-69-20-15	69.00	20.00	15.00	13.75	8,955	68.5	19.5	8
18	FSET-2000-79-20-15	79.00	20.00	15.00	13.75	9,675	78.5	19.5	8
19	FSET-2000-89-20-15	89.00	20.00	15.00	13.75	10,395	88.5	19.5	8
20	FSET-2000-99-20-15	99.00	20.00	15.00	13.75	12,157	98.5	19.5	10
21	FSET-2000-09-25-15	9.00	25.00	15.00	13.75	2,893	8.5	24.5	4
22	FSET-2000-19-25-15	19.00	25.00	15.00	13.75	3,493	18.5	24.5	4
23	FSET-2000-29-25-15	29.00	25.00	15.00	13.75	4,441	28.5	24.5	4
24	FSET-2000-39-25-15	39.00	25.00	15.00	13.75	5,960	38.5	24.5	6
25	FSET-2000-49-25-15	49.00	25.00	15.00	13.75	7,148	48.5	24.5	6
26	FSET-2000-59-25-15	59.00	25.00	15.00	13.75	7,868	58.5	24.5	6
27	FSET-2000-69-25-15	69.00	25.00	15.00	13.75	9,855	68.5	24.5	8
28	FSET-2000-79-25-15	79.00	25.00	15.00	13.75	10,575	78.5	24.5	8
29	FSET-2000-89-25-15	89.00	25.00	15.00	13.75	11,295	88.5	24.5	8
30	FSET-2000-99-25-15	99.00	25.00	15.00	13.75	13,282	98.5	24.5	10

ITEM #	SYSTEM I.D. NUMBER	LENGTH L1 (FT)	WIDTH W1 (FT)	HEIGHT TOS (FT)	HEIGHT TOH (FT)	SYSTEM WT. (LBS)	LENGTH L2 (FT)	WIDTH W2 (FT)	# COL'S. TOTAL
31	FSET-2000-09-10-20	9.00	10.00	20.00	18.75	3,096	8.45	9.33	4
32	FSET-2000-19-10-20	19.00	10.00	20.00	18.75	3,696	18.45	9.33	4
33	FSET-2000-29-10-20	29.00	10.00	20.00	18.75	4,644	28.45	9.33	4
34	FSET-2000-39-10-20	39.00	10.00	20.00	18.75	6,255	38.45	9.33	6
35	FSET-2000-49-10-20	49.00	10.00	20.00	18.75	7,443	48.45	9.33	6
36	FSET-2000-59-10-20	59.00	10.00	20.00	18.75	8,163	58.45	9.33	6
37	FSET-2000-69-10-20	69.00	10.00	20.00	18.75	10,242	68.45	9.33	8
38	FSET-2000-79-10-20	79.00	10.00	20.00	18.75	10,962	78.45	9.33	8
39	FSET-2000-89-10-20	89.00	10.00	20.00	18.75	11,682	88.45	9.33	8
40	FSET-2000-99-10-20	99.00	10.00	20.00	18.75	13,761	98.45	9.33	10
41	FSET-2000-09-20-20	9.00	20.00	20.00	18.75	3,463	8.45	19.33	4
42	FSET-2000-19-20-20	19.00	20.00	20.00	18.75	4,063	18.45	19.33	4
43	FSET-2000-29-20-20	29.00	20.00	20.00	18.75	5,011	28.45	19.33	4
44	FSET-2000-39-20-20	39.00	20.00	20.00	18.75	6,815	38.45	19.33	6
45	FSET-2000-49-20-20	49.00	20.00	20.00	18.75	8,003	48.45	19.33	6
46	FSET-2000-59-20-20	59.00	20.00	20.00	18.75	8,723	58.45	19.33	6
47	FSET-2000-69-20-20	69.00	20.00	20.00	18.75	10,995	68.45	19.33	8
48	FSET-2000-79-20-20	79.00	20.00	20.00	18.75	11,715	78.45	19.33	8
49	FSET-2000-89-20-20	89.00	20.00	20.00	18.75	12,435	88.45	19.33	8
50	FSET-2000-99-20-20	99.00	20.00	20.00	18.75	14,707	98.45	19.33	10
51	FSET-2000-09-25-20	9.00	25.00	20.00	18.75	3,913	8.45	24.33	4
52	FSET-2000-19-25-20	19.00	25.00	20.00	18.75	4,513	18.45	24.33	4
53	FSET-2000-29-25-20	29.00	25.00	20.00	18.75	5,461	28.45	24.33	4
54	FSET-2000-39-25-20	39.00	25.00	20.00	18.75	7,490	38.45	24.33	6
55	FSET-2000-49-25-20	49.00	25.00	20.00	18.75	8,678	48.45	24.33	6
56	FSET-2000-59-25-20	59.00	25.00	20.00	18.75	9,398	58.45	24.33	6
57	FSET-2000-69-25-20	69.00	25.00	20.00	18.75	11,895	68.45	24.33	8
58	FSET-2000-79-25-20	79.00	25.00	20.00	18.75	12,615	78.45	24.33	8
59	FSET-2000-89-25-20	89.00	25.00	20.00	18.75	13,335	88.45	24.33	8
60	FSET-2000-99-25-20	99.00	25.00	20.00	18.75	15,832	98.45	24.33	10