

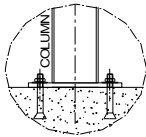
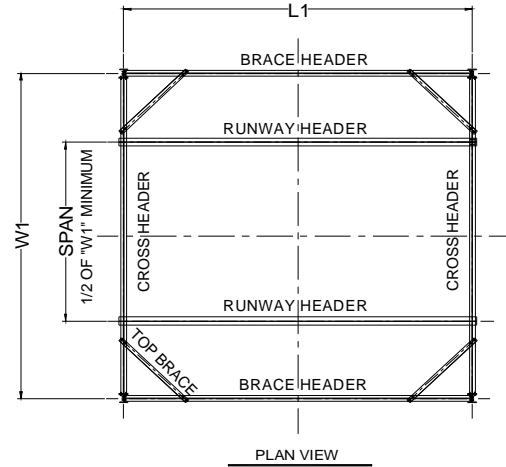


42827 Irwin Drive
 Harrison Twp. MI 48045 USA
 P/ 586-468-0909 F/ 586-468-2711
 E/ info@mccrane.com W/ mccrane.com

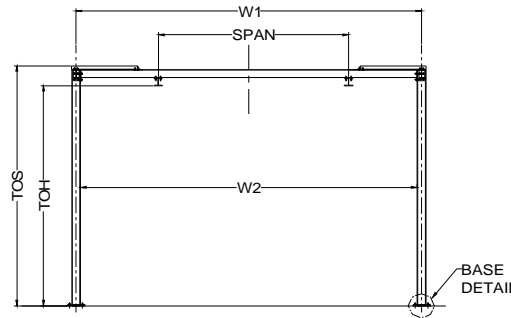
DIMENSIONS & WEIGHTS - TYPE FSET
1,000# CAPACITY FREE STANDING RUNWAY
STRUCTURE FOR HAND OPERATED CRANE

GENERAL NOTES:

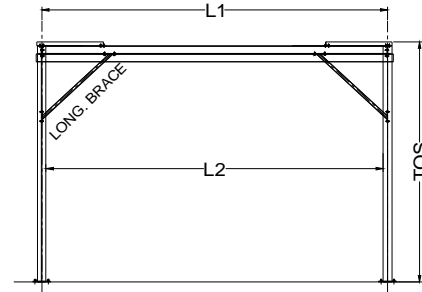
- System capacity shown is for the sum of live loads and dead loads suspended from bridge. Structures listed are for hand operated enclosed track crane or monorail systems only.
- Capacities shown are for One-(2) runway rail or One (1) monorail system only.
- Crane spans for runway systems must equal 1/2 the system width or greater (within limits of structure width). Loads must be kept within footprint of structure.
- For non-standard lengths, widths, or heights; use next larger structure and order with exact dimensions required.
- Structure kit include: ACAD system installation drawing specific for order, all structural steel work per attached concept drawing, bolting hardware, anchoring hardware for 8" minimum floor thickness, and gray primer paint finish.



BASE DETAIL



END VIEW



LONGITUDINAL VIEW

1,000# CAPACITY / 15 FT (TOS) SYSTEM HEIGHT

1,000# CAPACITY / 20 FT (TOS) SYSTEM HEIGHT

ITEM #	SYSTEM I.D. NUMBER	LENGTH L1 (FT)	WIDTH W1 (FT)	HEIGHT TOS (FT)	HEIGHT TOH (FT)	SYSTEM WT. (LBS)	LENGTH L2 (FT)	WIDTH W2 (FT)	# COL'S. TOTAL
1	FSET-1000-09-10-15	9.00	10.00	15.00	13.75	2,023	8.5	9.5	4
2	FSET-1000-19-10-15	19.00	10.00	15.00	13.75	2,623	18.5	9.5	4
3	FSET-1000-29-10-15	29.00	10.00	15.00	13.75	3,397	28.5	9.5	4
4	FSET-1000-39-10-15	39.00	10.00	15.00	13.75	4,655	38.5	9.5	6
5	FSET-1000-49-10-15	49.00	10.00	15.00	13.75	5,549	48.5	9.5	6
6	FSET-1000-59-10-15	59.00	10.00	15.00	13.75	6,209	58.5	9.5	6
7	FSET-1000-69-10-15	69.00	10.00	15.00	13.75	7,701	68.5	9.5	8
8	FSET-1000-79-10-15	79.00	10.00	15.00	13.75	8,361	78.5	9.5	8
9	FSET-1000-89-10-15	89.00	10.00	15.00	13.75	9,021	88.5	9.5	8
10	FSET-1000-99-10-15	99.00	10.00	15.00	13.75	10,513	98.5	9.5	10
11	FSET-1000-09-20-15	9.00	20.00	15.00	13.75	2,323	8.5	19.5	4
12	FSET-1000-19-20-15	19.00	20.00	15.00	13.75	2,923	18.5	19.5	4
13	FSET-1000-29-20-15	29.00	20.00	15.00	13.75	3,697	28.5	19.5	4
14	FSET-1000-39-20-15	39.00	20.00	15.00	13.75	5,105	38.5	19.5	6
15	FSET-1000-49-20-15	49.00	20.00	15.00	13.75	5,999	48.5	19.5	6
16	FSET-1000-59-20-15	59.00	20.00	15.00	13.75	6,659	58.5	19.5	6
17	FSET-1000-69-20-15	69.00	20.00	15.00	13.75	8,301	68.5	19.5	8
18	FSET-1000-79-20-15	79.00	20.00	15.00	13.75	8,961	78.5	19.5	8
19	FSET-1000-89-20-15	89.00	20.00	15.00	13.75	9,621	88.5	19.5	8
20	FSET-1000-99-20-15	99.00	20.00	15.00	13.75	11,263	98.5	19.5	10
21	FSET-1000-09-25-15	9.00	25.00	15.00	13.75	2,593	8.5	24.5	4
22	FSET-1000-19-25-15	19.00	25.00	15.00	13.75	3,193	18.5	24.5	4
23	FSET-1000-29-25-15	29.00	25.00	15.00	13.75	3,967	28.5	24.5	4
24	FSET-1000-39-25-15	39.00	25.00	15.00	13.75	5,510	38.5	24.5	6
25	FSET-1000-49-25-15	49.00	25.00	15.00	13.75	6,404	48.5	24.5	6
26	FSET-1000-59-25-15	59.00	25.00	15.00	13.75	7,064	58.5	24.5	6
27	FSET-1000-69-25-15	69.00	25.00	15.00	13.75	8,841	68.5	24.5	8
28	FSET-1000-79-25-15	79.00	25.00	15.00	13.75	9,501	78.5	24.5	8
29	FSET-1000-89-25-15	89.00	25.00	15.00	13.75	10,161	88.5	24.5	8
30	FSET-1000-99-25-15	99.00	25.00	15.00	13.75	11,938	98.5	24.5	10

ITEM #	SYSTEM I.D. NUMBER	LENGTH L1 (FT)	WIDTH W1 (FT)	HEIGHT TOS (FT)	HEIGHT TOH (FT)	SYSTEM WT. (LBS)	LENGTH L2 (FT)	WIDTH W2 (FT)	# COL'S. TOTAL
31	FSET-1000-09-10-20	9.00	10.00	20.00	18.75	2,563	8.5	9.33	4
32	FSET-1000-19-10-20	19.00	10.00	20.00	18.75	3,163	18.5	9.33	4
33	FSET-1000-29-10-20	29.00	10.00	20.00	18.75	3,937	28.5	9.33	4
34	FSET-1000-39-10-20	39.00	10.00	20.00	18.75	5,465	38.5	9.33	6
35	FSET-1000-49-10-20	49.00	10.00	20.00	18.75	6,359	48.5	9.33	6
36	FSET-1000-59-10-20	59.00	10.00	20.00	18.75	7,019	58.5	9.33	6
37	FSET-1000-69-10-20	69.00	10.00	20.00	18.75	8,781	68.5	9.33	8
38	FSET-1000-79-10-20	79.00	10.00	20.00	18.75	9,441	78.5	9.33	8
39	FSET-1000-89-10-20	89.00	10.00	20.00	18.75	10,101	88.5	9.33	8
40	FSET-1000-99-10-20	99.00	10.00	20.00	18.75	11,863	98.5	9.33	10
41	FSET-1000-09-20-20	9.00	20.00	20.00	18.75	2,863	8.5	19.33	4
42	FSET-1000-19-20-20	19.00	20.00	20.00	18.75	3,463	18.5	19.33	4
43	FSET-1000-29-20-20	29.00	20.00	20.00	18.75	4,237	28.5	19.33	4
44	FSET-1000-39-20-20	39.00	20.00	20.00	18.75	5,915	38.5	19.33	6
45	FSET-1000-49-20-20	49.00	20.00	20.00	18.75	6,809	48.5	19.33	6
46	FSET-1000-59-20-20	59.00	20.00	20.00	18.75	7,469	58.5	19.33	6
47	FSET-1000-69-20-20	69.00	20.00	20.00	18.75	9,381	68.5	19.33	8
48	FSET-1000-79-20-20	79.00	20.00	20.00	18.75	10,041	78.5	19.33	8
49	FSET-1000-89-20-20	89.00	20.00	20.00	18.75	10,701	88.5	19.33	8
50	FSET-1000-99-20-20	99.00	20.00	20.00	18.75	12,613	98.5	19.33	10
51	FSET-1000-09-25-20	9.00	25.00	20.00	18.75	3,133	8.5	24.33	4
52	FSET-1000-19-25-20	19.00	25.00	20.00	18.75	3,733	18.5	24.33	4
53	FSET-1000-29-25-20	29.00	25.00	20.00	18.75	4,507	28.5	24.33	4
54	FSET-1000-39-25-20	39.00	25.00	20.00	18.75	6,320	38.5	24.33	6
55	FSET-1000-49-25-20	49.00	25.00	20.00	18.75	7,214	48.5	24.33	6
56	FSET-1000-59-25-20	59.00	25.00	20.00	18.75	7,874	58.5	24.33	6
57	FSET-1000-69-25-20	69.00	25.00	20.00	18.75	9,921	68.5	24.33	8
58	FSET-1000-79-25-20	79.00	25.00	20.00	18.75	10,581	78.5	24.33	8
59	FSET-1000-89-25-20	89.00	25.00	20.00	18.75	11,241	88.5	24.33	8
60	FSET-1000-99-25-20	99.00	25.00	20.00	18.75	13,288	98.5	24.33	10