

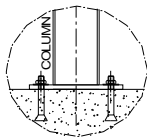
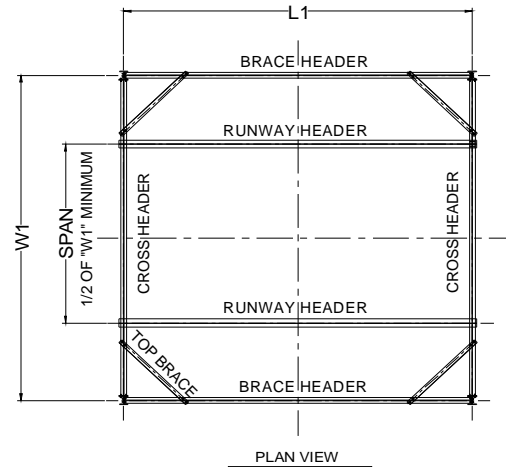


42827 Irwin Drive
 Harrison Twp. MI 48045 USA
 P/ 586-468-0909 F/ 586-468-2711
 E/ info@mccrane.com W/ mccrane.com

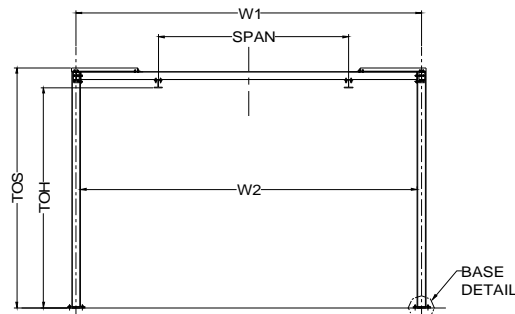
DIMENSIONS & WEIGHTS - TYPE FSET
500# CAPACITY FREE STANDING RUNWAY
STRUCTURE FOR HAND OPERATED CRANE

GENERAL NOTES:

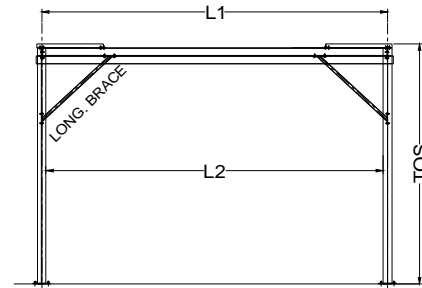
- System capacity shown is for the sum of live loads and dead loads suspended from bridge. Structures listed are for hand operated enclosed track crane or monorail systems only.
- Capacities shown are for One-(2) runway rail or One (1) monorail system only.
- Crane spans for runway systems must equal 1/2 the system width or greater (within limits of structure width). Loads must be kept within footprint of structure.
- For non-standard lengths, widths, or heights; use next larger structure and order with exact dimensions required.
- Structure kit include: ACAD system installation drawing specific for order, all structural steel work per attached concept drawing, bolting hardware, anchoring hardware for 8" minimum floor thickness, and gray primer paint finish.



BASE DETAIL



END VIEW



LONGITUDINAL VIEW

500# CAPACITY / 15 FT (TOS) SYSTEM HEIGHT

ITEM #	SYSTEM I.D. NUMBER	LENGTH L1 (FT)	WIDTH W1 (FT)	HEIGHT TOS (FT)	HEIGHT TOH (FT)	SYSTEM WT. (LBS)	LENGTH L2 (FT)	WIDTH W2 (FT)	# COL'S. TOTAL
1	FSET-0500-09-10-15	9.00	10.00	15.00	13.75	1,447	8.5	9.5	4
2	FSET-0500-19-10-15	19.00	10.00	15.00	13.75	1,807	18.5	9.5	4
3	FSET-0500-29-10-15	29.00	10.00	15.00	13.75	2,515	28.5	9.5	4
4	FSET-0500-39-10-15	39.00	10.00	15.00	13.75	3,179	38.5	9.5	6
5	FSET-0500-49-10-15	49.00	10.00	15.00	13.75	4,127	48.5	9.5	6
6	FSET-0500-59-10-15	59.00	10.00	15.00	13.75	4,607	58.5	9.5	6
7	FSET-0500-69-10-15	69.00	10.00	15.00	13.75	5,739	68.5	9.5	8
8	FSET-0500-79-10-15	79.00	10.00	15.00	13.75	6,219	78.5	9.5	8
9	FSET-0500-89-10-15	89.00	10.00	15.00	13.75	6,699	88.5	9.5	8
10	FSET-0500-99-10-15	99.00	10.00	15.00	13.75	7,831	98.5	9.5	10
11	FSET-0500-09-20-15	9.00	20.00	15.00	13.75	1,747	8.5	19.5	4
12	FSET-0500-19-20-15	19.00	20.00	15.00	13.75	2,107	18.5	19.5	4
13	FSET-0500-29-20-15	29.00	20.00	15.00	13.75	2,815	28.5	19.5	4
14	FSET-0500-39-20-15	39.00	20.00	15.00	13.75	3,629	38.5	19.5	6
15	FSET-0500-49-20-15	49.00	20.00	15.00	13.75	4,577	48.5	19.5	6
16	FSET-0500-59-20-15	59.00	20.00	15.00	13.75	5,057	58.5	19.5	6
17	FSET-0500-69-20-15	69.00	20.00	15.00	13.75	6,339	68.5	19.5	8
18	FSET-0500-79-20-15	79.00	20.00	15.00	13.75	6,819	78.5	19.5	8
19	FSET-0500-89-20-15	89.00	20.00	15.00	13.75	7,299	88.5	19.5	8
20	FSET-0500-99-20-15	99.00	20.00	15.00	13.75	8,581	98.5	19.5	10
21	FSET-0500-09-25-15	9.00	25.00	15.00	13.75	2,017	8.5	24.5	4
22	FSET-0500-19-25-15	19.00	25.00	15.00	13.75	2,377	18.5	24.5	4
23	FSET-0500-29-25-15	29.00	25.00	15.00	13.75	3,085	28.5	24.5	4
24	FSET-0500-39-25-15	39.00	25.00	15.00	13.75	4,034	38.5	24.5	6
25	FSET-0500-49-25-15	49.00	25.00	15.00	13.75	4,982	48.5	24.5	6
26	FSET-0500-59-25-15	59.00	25.00	15.00	13.75	5,462	58.5	24.5	6
27	FSET-0500-69-25-15	69.00	25.00	15.00	13.75	6,879	68.5	24.5	8
28	FSET-0500-79-25-15	79.00	25.00	15.00	13.75	7,359	78.5	24.5	8
29	FSET-0500-89-25-15	89.00	25.00	15.00	13.75	7,839	88.5	24.5	8
30	FSET-0500-99-25-15	99.00	25.00	15.00	13.75	9,256	98.5	24.5	10

500# CAPACITY / 20 FT (TOS) SYSTEM HEIGHT

ITEM #	SYSTEM I.D. NUMBER	LENGTH L1 (FT)	WIDTH W1 (FT)	HEIGHT TOS (FT)	HEIGHT TOH (FT)	SYSTEM WT. (LBS)	LENGTH L2 (FT)	WIDTH W2 (FT)	# COL'S. TOTAL
31	FSET-0500-09-10-20	9.00	10.00	20.00	18.75	2,107	8.5	9.5	4
32	FSET-0500-19-10-20	19.00	10.00	20.00	18.75	2,467	18.5	9.5	4
33	FSET-0500-29-10-20	29.00	10.00	20.00	18.75	3,175	28.5	9.5	4
34	FSET-0500-39-10-20	39.00	10.00	20.00	18.75	4,169	38.5	9.5	6
35	FSET-0500-49-10-20	49.00	10.00	20.00	18.75	5,117	48.5	9.5	6
36	FSET-0500-59-10-20	59.00	10.00	20.00	18.75	5,597	58.5	9.5	6
37	FSET-0500-69-10-20	69.00	10.00	20.00	18.75	7,059	68.5	9.5	8
38	FSET-0500-79-10-20	79.00	10.00	20.00	18.75	7,539	78.5	9.5	8
39	FSET-0500-89-10-20	89.00	10.00	20.00	18.75	8,019	88.5	9.5	8
40	FSET-0500-99-10-20	99.00	10.00	20.00	18.75	9,481	98.5	9.5	10
41	FSET-0500-09-20-20	9.00	20.00	20.00	18.75	2,407	8.5	19.5	4
42	FSET-0500-19-20-20	19.00	20.00	20.00	18.75	2,767	18.5	19.5	4
43	FSET-0500-29-20-20	29.00	20.00	20.00	18.75	3,475	28.5	19.5	4
44	FSET-0500-39-20-20	39.00	20.00	20.00	18.75	4,619	38.5	19.5	6
45	FSET-0500-49-20-20	49.00	20.00	20.00	18.75	5,567	48.5	19.5	6
46	FSET-0500-59-20-20	59.00	20.00	20.00	18.75	6,047	58.5	19.5	6
47	FSET-0500-69-20-20	69.00	20.00	20.00	18.75	7,659	68.5	19.5	8
48	FSET-0500-79-20-20	79.00	20.00	20.00	18.75	8,139	78.5	19.5	8
49	FSET-0500-89-20-20	89.00	20.00	20.00	18.75	8,619	88.5	19.5	8
50	FSET-0500-99-20-20	99.00	20.00	20.00	18.75	10,231	98.5	19.5	10
51	FSET-0500-09-25-20	9.00	25.00	20.00	18.75	2,677	8.5	24.5	4
52	FSET-0500-19-25-20	19.00	25.00	20.00	18.75	3,037	18.5	24.5	4
53	FSET-0500-29-25-20	29.00	25.00	20.00	18.75	3,745	28.5	24.5	4
54	FSET-0500-39-25-20	39.00	25.00	20.00	18.75	5,024	38.5	24.5	6
55	FSET-0500-49-25-20	49.00	25.00	20.00	18.75	5,972	48.5	24.5	6
56	FSET-0500-59-25-20	59.00	25.00	20.00	18.75	6,452	58.5	24.5	6
57	FSET-0500-69-25-20	69.00	25.00	20.00	18.75	8,199	68.5	24.5	8
58	FSET-0500-79-25-20	79.00	25.00	20.00	18.75	8,679	78.5	24.5	8
59	FSET-0500-89-25-20	89.00	25.00	20.00	18.75	9,159	88.5	24.5	8
60	FSET-0500-99-25-20	99.00	25.00	20.00	18.75	10,906	98.5	24.5	10