

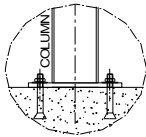
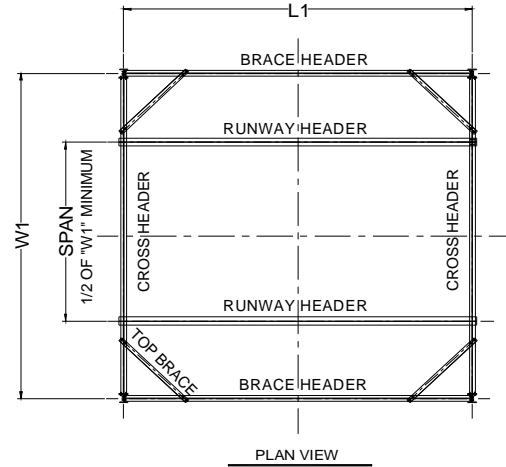


42827 Irwin Drive
 Harrison Twp. MI 48045 USA
 P/ 586-468-0909 F/ 586-468-2711
 E/ info@mccrane.com W/ mccrane.com

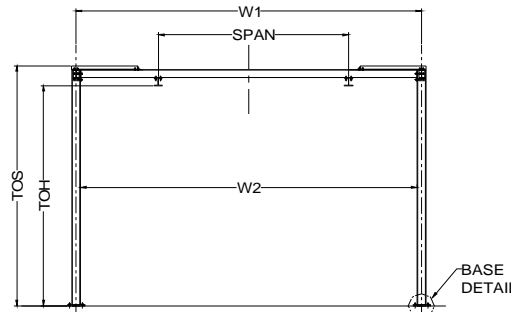
DIMENSIONS & WEIGHTS - TYPE FSET
250# CAPACITY FREE STANDING RUNWAY
STRUCTURE FOR HAND OPERATED CRANE

GENERAL NOTES:

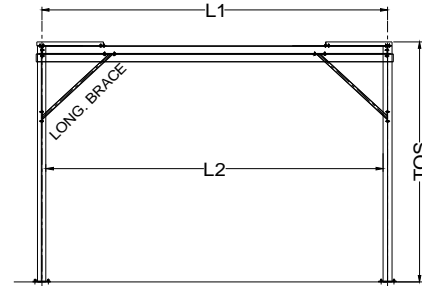
- System capacity shown is for the sum of live loads and dead loads suspended from bridge. Structures listed are for hand operated enclosed track crane or monorail systems only.
- Capacities shown are for One-(2) runway rail or One (1) monorail system only.
- Crane spans for runway systems must equal 1/2 the system width or greater (within limits of structure width). Loads must be kept within footprint of structure.
- For non-standard lengths, widths, or heights; use next larger structure and order with exact dimensions required.
- Structure kit include: ACAD system installation drawing specific for order, all structural steel work per attached concept drawing, bolting hardware, anchoring hardware for 8" minimum floor thickness, and gray primer paint finish.



BASE DETAIL



END VIEW



LONGITUDINAL VIEW

250# CAPACITY / 15 FT (TOS) SYSTEM HEIGHT

ITEM #	SYSTEM I.D. NUMBER	LENGTH L1 (FT)	WIDTH W1 (FT)	HEIGHT TOS (FT)	HEIGHT TOH (FT)	SYSTEM WT. (LBS)	LENGTH L2 (FT)	WIDTH W2 (FT)	# COL'S. TOTAL
1	FSET-0250-09-10-15	9.00	10.00	15.00	13.75	1,447	8.66	9.5	4
2	FSET-0250-19-10-15	19.00	10.00	15.00	13.75	1,807	18.66	9.5	4
3	FSET-0250-29-10-15	29.00	10.00	15.00	13.75	2,515	28.66	9.5	4
4	FSET-0250-39-10-15	39.00	10.00	15.00	13.75	3,179	38.66	9.5	6
5	FSET-0250-49-10-15	49.00	10.00	15.00	13.75	4,127	48.66	9.5	6
6	FSET-0250-59-10-15	59.00	10.00	15.00	13.75	4,607	58.66	9.5	6
7	FSET-0250-69-10-15	69.00	10.00	15.00	13.75	5,739	68.66	9.5	8
8	FSET-0250-79-10-15	79.00	10.00	15.00	13.75	6,219	78.66	9.5	8
9	FSET-0250-89-10-15	89.00	10.00	15.00	13.75	6,699	88.66	9.5	8
10	FSET-0250-99-10-15	99.00	10.00	15.00	13.75	7,831	98.66	9.5	10
11	FSET-0250-09-20-15	9.00	20.00	15.00	13.75	1,627	8.66	19.5	4
12	FSET-0250-19-20-15	19.00	20.00	15.00	13.75	1,987	18.66	19.5	4
13	FSET-0250-29-20-15	29.00	20.00	15.00	13.75	2,695	28.66	19.5	4
14	FSET-0250-39-20-15	39.00	20.00	15.00	13.75	3,449	38.66	19.5	6
15	FSET-0250-49-20-15	49.00	20.00	15.00	13.75	4,397	48.66	19.5	6
16	FSET-0250-59-20-15	59.00	20.00	15.00	13.75	4,877	58.66	19.5	6
17	FSET-0250-69-20-15	69.00	20.00	15.00	13.75	6,099	68.66	19.5	8
18	FSET-0250-79-20-15	79.00	20.00	15.00	13.75	6,579	78.66	19.5	8
19	FSET-0250-89-20-15	89.00	20.00	15.00	13.75	7,059	88.66	19.5	8
20	FSET-0250-99-20-15	99.00	20.00	15.00	13.75	8,281	98.66	19.5	10
21	FSET-0250-09-25-15	9.00	25.00	15.00	13.75	1,867	8.66	24.5	4
22	FSET-0250-19-25-15	19.00	25.00	15.00	13.75	2,227	18.66	24.5	4
23	FSET-0250-29-25-15	29.00	25.00	15.00	13.75	2,935	28.66	24.5	4
24	FSET-0250-39-25-15	39.00	25.00	15.00	13.75	3,809	38.66	24.5	6
25	FSET-0250-49-25-15	49.00	25.00	15.00	13.75	4,757	48.66	24.5	6
26	FSET-0250-59-25-15	59.00	25.00	15.00	13.75	5,237	58.66	24.5	6
27	FSET-0250-69-25-15	69.00	25.00	15.00	13.75	6,579	68.66	24.5	8
28	FSET-0250-79-25-15	79.00	25.00	15.00	13.75	7,059	78.66	24.5	8
29	FSET-0250-89-25-15	89.00	25.00	15.00	13.75	7,539	88.66	24.5	8
30	FSET-0250-99-25-15	99.00	25.00	15.00	13.75	8,881	98.66	24.5	10

250# CAPACITY / 20 FT (TOS) SYSTEM HEIGHT

ITEM #	SYSTEM I.D. NUMBER	LENGTH L1 (FT)	WIDTH W1 (FT)	HEIGHT TOS (FT)	HEIGHT TOH (FT)	SYSTEM WT. (LBS)	LENGTH L2 (FT)	WIDTH W2 (FT)	# COL'S. TOTAL
31	FSET-0250-09-10-20	9.00	10.00	20.00	18.75	2,107	8.66	9.5	4
32	FSET-0250-19-10-20	19.00	10.00	20.00	18.75	2,467	18.66	9.5	4
33	FSET-0250-29-10-20	29.00	10.00	20.00	18.75	3,175	28.66	9.5	4
34	FSET-0250-39-10-20	39.00	10.00	20.00	18.75	4,169	38.66	9.5	6
35	FSET-0250-49-10-20	49.00	10.00	20.00	18.75	5,117	48.66	9.5	6
36	FSET-0250-59-10-20	59.00	10.00	20.00	18.75	5,597	58.66	9.5	6
37	FSET-0250-69-10-20	69.00	10.00	20.00	18.75	7,059	68.66	9.5	8
38	FSET-0250-79-10-20	79.00	10.00	20.00	18.75	7,539	78.66	9.5	8
39	FSET-0250-89-10-20	89.00	10.00	20.00	18.75	8,019	88.66	9.5	8
40	FSET-0250-99-10-20	99.00	10.00	20.00	18.75	9,481	98.66	9.5	10
41	FSET-0250-09-20-20	9.00	20.00	20.00	18.75	2,287	8.66	19.5	4
42	FSET-0250-19-20-20	19.00	20.00	20.00	18.75	2,647	18.66	19.5	4
43	FSET-0250-29-20-20	29.00	20.00	20.00	18.75	3,355	28.66	19.5	4
44	FSET-0250-39-20-20	39.00	20.00	20.00	18.75	4,439	38.66	19.5	6
45	FSET-0250-49-20-20	49.00	20.00	20.00	18.75	5,387	48.66	19.5	6
46	FSET-0250-59-20-20	59.00	20.00	20.00	18.75	5,867	58.66	19.5	6
47	FSET-0250-69-20-20	69.00	20.00	20.00	18.75	7,419	68.66	19.5	8
48	FSET-0250-79-20-20	79.00	20.00	20.00	18.75	7,899	78.66	19.5	8
49	FSET-0250-89-20-20	89.00	20.00	20.00	18.75	8,379	88.66	19.5	8
50	FSET-0250-99-20-20	99.00	20.00	20.00	18.75	9,931	98.66	19.5	10
51	FSET-0250-09-25-20	9.00	25.00	20.00	18.75	2,527	8.66	24.5	4
52	FSET-0250-19-25-20	19.00	25.00	20.00	18.75	2,887	18.66	24.5	4
53	FSET-0250-29-25-20	29.00	25.00	20.00	18.75	3,595	28.66	24.5	4
54	FSET-0250-39-25-20	39.00	25.00	20.00	18.75	4,799	38.66	24.5	6
55	FSET-0250-49-25-20	49.00	25.00	20.00	18.75	5,747	48.66	24.5	6
56	FSET-0250-59-25-20	59.00	25.00	20.00	18.75	6,227	58.66	24.5	6
57	FSET-0250-69-25-20	69.00	25.00	20.00	18.75	7,899	68.66	24.5	8
58	FSET-0250-79-25-20	79.00	25.00	20.00	18.75	8,379	78.66	24.5	8
59	FSET-0250-89-25-20	89.00	25.00	20.00	18.75	8,859	88.66	24.5	8
60	FSET-0250-99-25-20	99.00	25.00	20.00	18.75	10,531	98.66	24.5	10