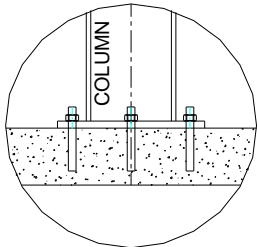
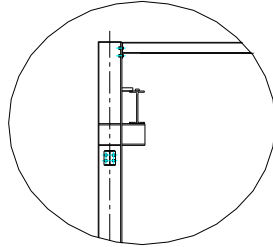


42827 Irwin Drive  
 Harrison Twp. MI 48045 USA  
 P/ 586-468-0909 F/ 586-468-2711  
 E/ [info@mccrane.com](mailto:info@mccrane.com) W/ [mccrane.com](http://mccrane.com)

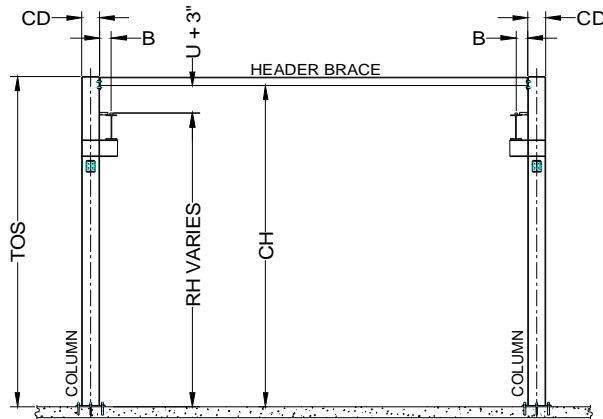
## DIMENSIONS & WEIGHTS - TYPE FSTM-6000 3-TON CAPACITY FREE STANDING RUNWAY STRUCTURE FOR MOTORIZED CRANE - 20FT TOS



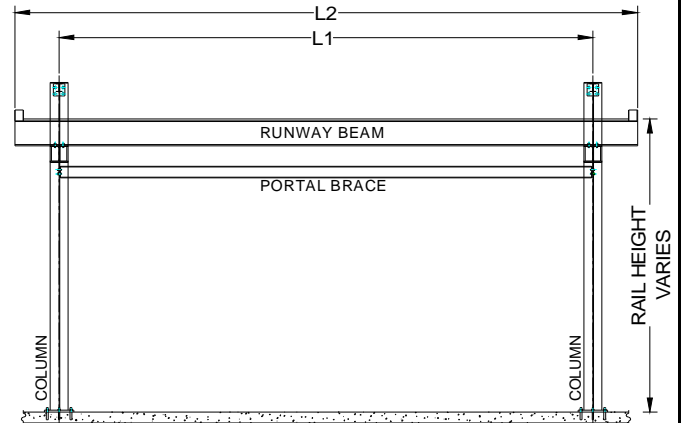
**BASE DETAIL**



**BEAM/COL. DETAIL**



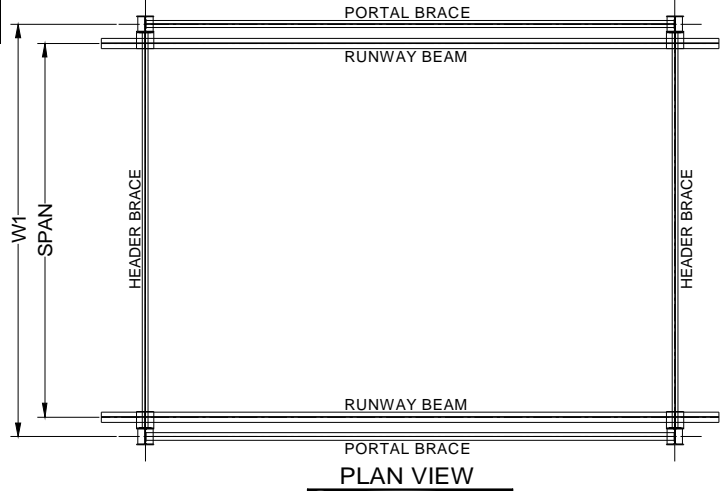
**END VIEW**



**LONGITUDINAL VIEW**

**GENERAL NOTES:**

- Runway rail is rectangular square bar welded to runway beam.  
Additional field welding is required at splice joints that overlap beam splices.
- Capacities shown are for One (1) Crane at rated capacity.
- Runway designed for MCC standard crane types: TRSGCH, TRSGWR, TRSGWD, or TRSGWS.  
Special or customer supplied cranes require review of structure for specific crane design
- For non-standard lengths, widths, or heights; use next larger structure and order with exact dimensions required.
- Structure kit includes: ACAD system installation drawing specific for order, all structural steel work per attached concept drawing, bolting hardware, anchoring hardware for 8" minimum floor thickness, and gray primer paint finish.
- Structure deflection is approximately 1/2" maximum in all directions. Please contact MCC if additional deflection control is required.
- Runway rail height "RH" is calculated for each structure for specific crane to be used.  
Formula: Rail Height RH = Clear Height (CH) - Crane Height (U)-3" clearance
- Minimum 8" reinforced concrete (min.4000psi) floor required for all structures.
- Base runway cell is a braced cell. Additional cells can be unbraced cell up to (3). Every fourth cell must be a braced cell.



**PLAN VIEW**

**3-TON CAPACITY / 20 FT (TOS) SYSTEM HEIGHT**

ITEM #	SYSTEM I.D. NUMBER	LENGTH L1 (FT)	WIDTH W1 (FT)	HEIGHT TOS (FT)	HEIGHT CH (FT)	SPAN (FT)	LENGTH L2 (FT)	HEIGHT RH (FT)	WIDTH CD (IN)	WIDTH B (IN)	SYSTEM WT. (LBS)	# COL'S. TOTAL
1	FSTM-6000-20-20-20	20.00	20.00	20.00	19.50	18.00	25.00	CH-U-3"	10.00	7.00	7,914	4
2	FSTM-6000-25-20-20	25.00	20.00	20.00	19.50	18.00	30.00	CH-U-3"	10.00	7.00	9,217	4
3	FSTM-6000-30-20-20	30.00	20.00	20.00	19.50	18.00	35.00	CH-U-3"	10.00	7.00	10,834	4
4	FSTM-6000-20-25-20	20.00	25.00	20.00	19.33	23.00	25.00	CH-U-3"	10.00	7.00	8,460	4
5	FSTM-6000-25-25-20	25.00	25.00	20.00	19.33	23.00	30.00	CH-U-3"	10.00	7.00	9,500	4
6	FSTM-6000-30-25-20	30.00	25.00	20.00	19.33	23.00	35.00	CH-U-3"	10.00	7.00	11,118	4
7	FSTM-6000-20-30-20	20.00	30.00	20.00	19.33	28.00	25.00	CH-U-3"	10.00	7.00	8,996	4
8	FSTM-6000-25-30-20	25.00	30.00	20.00	19.33	28.00	30.00	CH-U-3"	10.00	7.00	10,036	4
9	FSTM-6000-30-30-20	30.00	30.00	20.00	19.33	28.00	35.00	CH-U-3"	10.00	7.00	11,653	4
10	FSTM-6000-20-35-20	20.00	35.00	20.00	19.17	33.00	25.00	CH-U-3"	10.00	7.00	9,290	4
11	FSTM-6000-25-35-20	25.00	35.00	20.00	19.17	33.00	30.00	CH-U-3"	10.00	7.00	10,330	4
12	FSTM-6000-30-35-20	30.00	35.00	20.00	19.17	33.00	35.00	CH-U-3"	10.00	7.00	12,315	4
13	FSTM-6000-20-40-20	20.00	40.00	20.00	19.00	38.00	25.00	CH-U-3"	10.00	7.00	9,594	4
14	FSTM-6000-25-40-20	25.00	40.00	20.00	19.00	38.00	30.00	CH-U-3"	10.00	7.00	10,897	4
15	FSTM-6000-30-40-20	30.00	40.00	20.00	19.00	38.00	35.00	CH-U-3"	10.00	7.00	12,514	4
16	FSTM-6000-20-45-20	20.00	45.00	20.00	18.83	43.00	25.00	CH-U-3"	10.00	7.00	10,508	4
17	FSTM-6000-25-45-20	25.00	45.00	20.00	18.83	43.00	30.00	CH-U-3"	10.00	7.00	11,548	4
18	FSTM-6000-30-45-20	30.00	45.00	20.00	18.83	43.00	35.00	CH-U-3"	10.00	7.00	13,165	4
19	FSTM-6000-20-50-20	20.00	50.00	20.00	18.67	48.00	25.00	CH-U-3"	10.00	7.00	11,453	4
20	FSTM-6000-25-50-20	25.00	50.00	20.00	18.67	48.00	30.00	CH-U-3"	10.00	7.00	12,493	4
21	FSTM-6000-30-50-20	30.00	50.00	20.00	18.67	48.00	35.00	CH-U-3"	10.00	7.00	14,478	4

**ADDTL. CELL LENGTH**

ADDTL. LGTH (FT)	ADDTL. WT. (LBS)	ADDTL. COL'S. (EA)
20.00	3,557	2
25.00	4,471	2
30.00	5,469	2
20.00	3,908	2
25.00	4,612	2
30.00	5,610	2
20.00	4,176	2
25.00	4,880	2
30.00	5,878	2
20.00	4,323	2
25.00	5,027	2
30.00	6,340	2
20.00	4,397	2
25.00	5,311	2
30.00	6,309	2
20.00	4,932	2
25.00	5,636	2
30.00	6,634	2
20.00	5,405	2
25.00	6,109	2
30.00	7,422	2