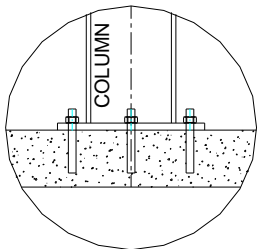
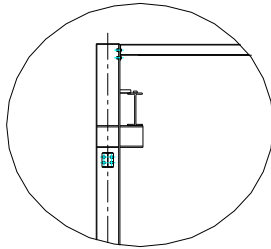


42827 Irwin Drive
 Harrison Twp. MI 48045 USA
 P/ 586-468-0909 F/ 586-468-2711
 E/ info@mccrane.com W/ mccrane.com

DIMENSIONS & WEIGHTS - TYPE FSTM-4000 2-TON CAPACITY FREE STANDING RUNWAY STRUCTURE FOR MOTORIZED CRANE - 20FT TOS



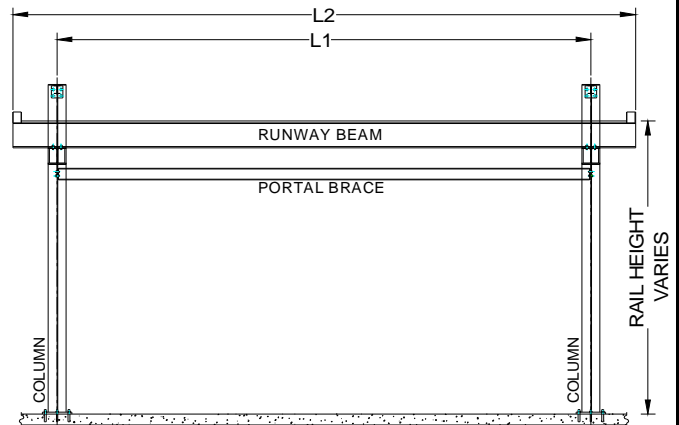
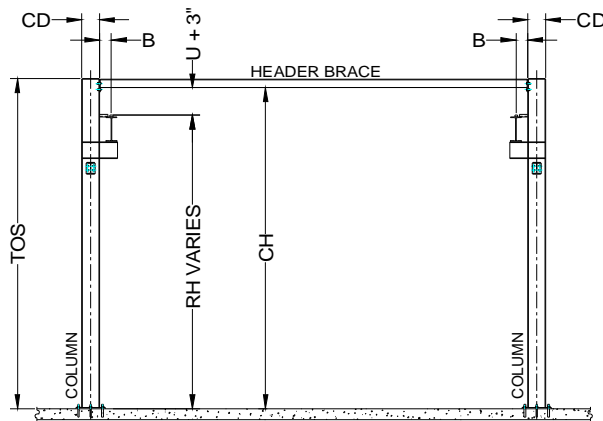
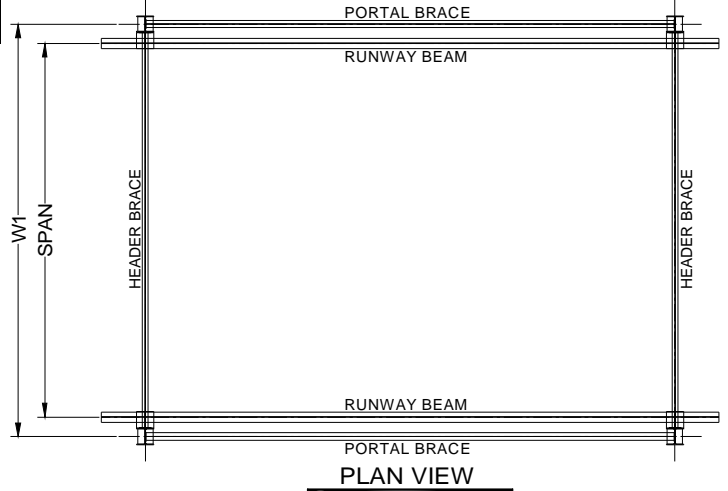
BASE DETAIL



BEAM/COL. DETAIL

GENERAL NOTES:

- Runway rail is rectangular square bar welded to runway beam.
Additional field welding is required at splice joints that overlap beam splices.
- Capacities shown are for One (1) Crane at rated capacity.
- Runway designed for MCC standard crane types: TRSGCH, TRSGWR, TRSGWD, or TRSGWS.
Special or customer supplied cranes require review of structure for specific crane design
- For non-standard lengths, widths, or heights; use next larger structure and order with exact dimensions required.
- Structure kit includes: ACAD system installation drawing specific for order, all structural steel work per attached concept drawing, bolting hardware, anchoring hardware for 8" minimum floor thickness, and gray primer paint finish.
- Structure deflection is approximately 1/2" maximum in all directions. Please contact MCC if additional deflection control is required.
- Runway rail height "RH" is calculated for each structure for specific crane to be used.
Formula: Rail Height RH = Clear Height (CH) - Crane Height (U)-3" clearance
- Minimum 8" reinforced concrete (min.4000psi) floor required for all structures.
- Base runway cell is a braced cell. Additional cells can be unbraced cell up to (3). Every fourth cell must be a braced cell.



2-TON CAPACITY / 20 FT (TOS) SYSTEM HEIGHT

ITEM #	SYSTEM I.D. NUMBER	LENGTH L1 (FT)	WIDTH W1 (FT)	HEIGHT TOS (FT)	HEIGHT CH (FT)	SPAN (FT)	LENGTH L2 (FT)	HEIGHT RH (FT)	WIDTH CD (IN)	WIDTH B (IN)	SYSTEM WT. (LBS)	# COL'S. TOTAL
1	FSTM-4000-20-20-20	20.00	20.00	20.00	19.50	18.00	25.00	CH-U-3"	10.00	7.00	7,255	4
2	FSTM-4000-25-20-20	25.00	20.00	20.00	19.50	18.00	30.00	CH-U-3"	10.00	7.00	8,390	4
3	FSTM-4000-30-20-20	30.00	20.00	20.00	19.50	18.00	35.00	CH-U-3"	10.00	7.00	9,797	4
4	FSTM-4000-20-25-20	20.00	25.00	20.00	19.33	23.00	25.00	CH-U-3"	10.00	7.00	7,896	4
5	FSTM-4000-25-25-20	25.00	25.00	20.00	19.33	23.00	30.00	CH-U-3"	10.00	7.00	9,030	4
6	FSTM-4000-30-25-20	30.00	25.00	20.00	19.33	23.00	35.00	CH-U-3"	10.00	7.00	10,438	4
7	FSTM-4000-20-30-20	20.00	30.00	20.00	19.33	28.00	25.00	CH-U-3"	10.00	7.00	8,431	4
8	FSTM-4000-25-30-20	25.00	30.00	20.00	19.33	28.00	30.00	CH-U-3"	10.00	7.00	9,629	4
9	FSTM-4000-30-30-20	30.00	30.00	20.00	19.33	28.00	35.00	CH-U-3"	10.00	7.00	10,973	4
10	FSTM-4000-20-35-20	20.00	35.00	20.00	19.17	33.00	25.00	CH-U-3"	10.00	7.00	8,935	4
11	FSTM-4000-25-35-20	25.00	35.00	20.00	19.17	33.00	30.00	CH-U-3"	10.00	7.00	9,923	4
12	FSTM-4000-30-35-20	30.00	35.00	20.00	19.17	33.00	35.00	CH-U-3"	10.00	7.00	11,267	4
13	FSTM-4000-20-40-20	20.00	40.00	20.00	19.00	38.00	25.00	CH-U-3"	10.00	7.00	9,292	4
14	FSTM-4000-25-40-20	25.00	40.00	20.00	19.00	38.00	30.00	CH-U-3"	10.00	7.00	10,490	4
15	FSTM-4000-30-40-20	30.00	40.00	20.00	19.00	38.00	35.00	CH-U-3"	10.00	7.00	11,834	4
16	FSTM-4000-20-45-20	20.00	45.00	20.00	18.83	43.00	25.00	CH-U-3"	10.00	7.00	9,943	4
17	FSTM-4000-25-45-20	25.00	45.00	20.00	18.83	43.00	30.00	CH-U-3"	10.00	7.00	11,141	4
18	FSTM-4000-30-45-20	30.00	45.00	20.00	18.83	43.00	35.00	CH-U-3"	10.00	7.00	12,706	4
19	FSTM-4000-20-50-20	20.00	50.00	20.00	18.67	48.00	25.00	CH-U-3"	10.00	7.00	11,098	4
20	FSTM-4000-25-50-20	25.00	50.00	20.00	18.67	48.00	30.00	CH-U-3"	10.00	7.00	12,086	4
21	FSTM-4000-30-50-20	30.00	50.00	20.00	18.67	48.00	35.00	CH-U-3"	10.00	7.00	13,651	4

ADDTL. CELL LENGTH

ADDTL. LGTH (FT)	ADDTL. WT. (LBS)	ADDTL. COL'S. (EA)
20.00	2,965	2
25.00	3,732	2
30.00	4,541	2
20.00	3,106	2
25.00	3,873	2
30.00	4,682	2
20.00	3,374	2
25.00	4,194	2
30.00	4,950	2
20.00	3,689	2
25.00	4,341	2
30.00	5,097	2
20.00	3,805	2
25.00	4,624	2
30.00	5,381	2
20.00	4,130	2
25.00	4,950	2
30.00	5,895	2
20.00	4,960	2
25.00	5,611	2
30.00	6,557	2