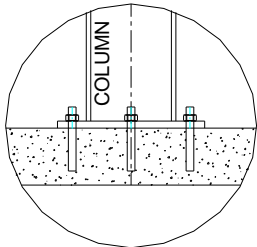


42827 Irwin Drive
 Harrison Twp. MI 48045 USA
 P/ 586-468-0909 F/ 586-468-2711
 E/ info@mccrane.com W/ mccrane.com

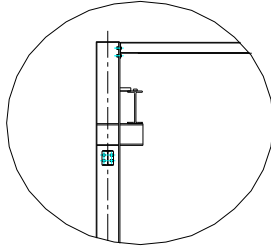
DIMENSIONS & WEIGHTS - TYPE FSTM-20000

10-TON CAPACITY FREE STANDING RUNWAY

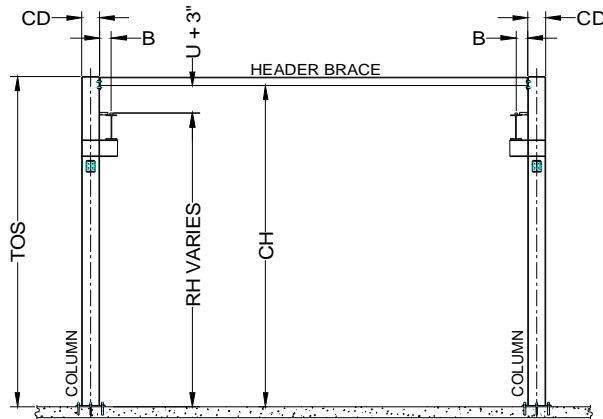
STRUCTURE FOR MOTORIZED CRANE - 20FT TOS



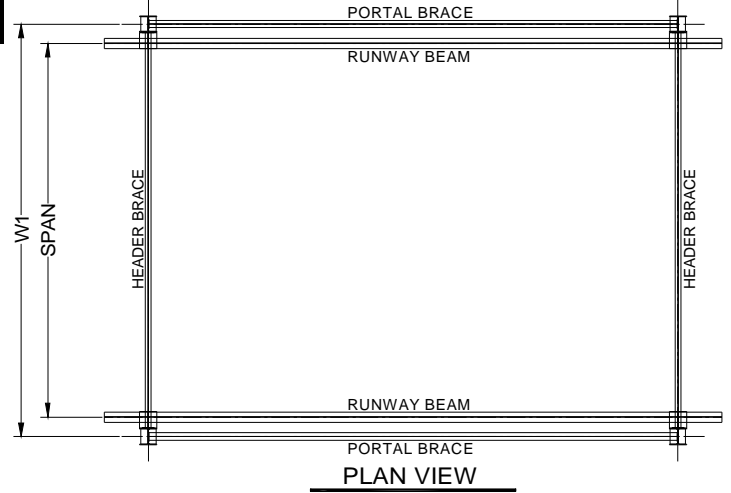
BASE DETAIL



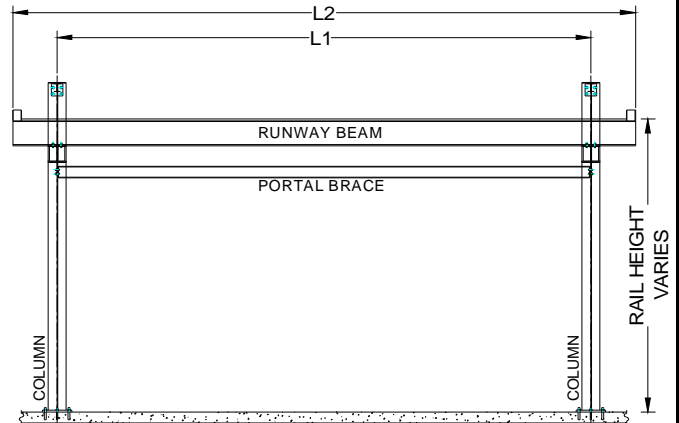
BEAM/COL. DETAIL



END VIEW



PLAN VIEW



LONGITUDINAL VIEW

GENERAL NOTES:

- Runway rail is rectangular square bar welded to runway beam.
Additional field welding is required at splice joints that overlap beam splices.
- Capacities shown are for One (1) Crane at rated capacity.
- Runway designed for MCC standard crane types: TRSGCH, TRSGWR, TRSGWD, or TRSGWS.
Special or customer supplied cranes require review of structure for specific crane design
- For non-standard lengths, widths, or heights; use next larger structure and order with exact dimensions required.
- Structure kit includes: ACAD system installation drawing specific for order, all structural steel work per attached concept drawing, bolting hardware, anchoring hardware for 8" minimum floor thickness, and gray primer paint finish.
- Structure deflection is approximately 1/2" maximum in all directions. Please contact MCC if additional deflection control is required.
- Runway rail height "RH" is calculated for each structure for specific crane to be used.
Formula: Rail Height RH = Clear Height (CH) - Crane Height (U)-3" clearance
- Minimum 8" reinforced concrete (min.4000psi) floor required for all structures.
- Base runway cell is a braced cell. Additional cells can be unbraced cell up to (3). Every fourth cell must be a braced cell.

10-TON CAPACITY / 20 FT (TOS) SYSTEM HEIGHT

ITEM #	SYSTEM I.D. NUMBER	LENGTH L1 (FT)	WIDTH W1 (FT)	HEIGHT TOS (FT)	HEIGHT CH (FT)	SPAN (FT)	LENGTH L2 (FT)	HEIGHT RH (FT)	WIDTH CD (IN)	WIDTH B (IN)	SYSTEM WT. (LBS)	# COL'S. TOTAL
1	FSTM-20000-20-20-20	20.00	20.00	20.00	19.50	18.00	25.00	CH-U-3"	12.00	6.00	11,492	4
2	FSTM-20000-25-20-20	25.00	20.00	20.00	19.50	18.00	30.00	CH-U-3"	12.00	6.00	13,215	4
3	FSTM-20000-30-20-20	30.00	20.00	20.00	19.50	18.00	35.00	CH-U-3"	12.00	6.00	15,610	4
4	FSTM-20000-20-25-20	20.00	25.00	20.00	19.33	23.00	25.00	CH-U-3"	12.00	6.00	11,807	4
5	FSTM-20000-25-25-20	25.00	25.00	20.00	19.33	23.00	30.00	CH-U-3"	12.00	6.00	13,908	4
6	FSTM-20000-30-25-20	30.00	25.00	20.00	19.33	23.00	35.00	CH-U-3"	12.00	6.00	15,925	4
7	FSTM-20000-20-30-20	20.00	30.00	20.00	19.33	28.00	25.00	CH-U-3"	12.00	6.00	13,261	4
8	FSTM-20000-25-30-20	25.00	30.00	20.00	19.33	28.00	30.00	CH-U-3"	12.00	6.00	15,100	4
9	FSTM-20000-30-30-20	30.00	30.00	20.00	19.33	28.00	35.00	CH-U-3"	12.00	6.00	17,117	4
10	FSTM-20000-20-35-20	20.00	35.00	20.00	19.17	33.00	25.00	CH-U-3"	12.00	6.00	13,660	4
11	FSTM-20000-25-35-20	25.00	35.00	20.00	19.17	33.00	30.00	CH-U-3"	12.00	6.00	15,499	4
12	FSTM-20000-30-35-20	30.00	35.00	20.00	19.17	33.00	35.00	CH-U-3"	12.00	6.00	17,589	4
13	FSTM-20000-20-40-20	20.00	40.00	20.00	19.00	38.00	25.00	CH-U-3"	12.00	6.00	14,269	4
14	FSTM-20000-25-40-20	25.00	40.00	20.00	19.00	38.00	30.00	CH-U-3"	12.00	6.00	16,108	4
15	FSTM-20000-30-40-20	30.00	40.00	20.00	19.00	38.00	35.00	CH-U-3"	12.00	6.00	18,860	4
16	FSTM-20000-20-45-20	20.00	45.00	20.00	18.83	42.83	25.00	CH-U-3"	12.00	7.00	14,962	4
17	FSTM-20000-25-45-20	25.00	45.00	20.00	18.83	42.83	30.00	CH-U-3"	12.00	7.00	16,801	4
18	FSTM-20000-30-45-20	30.00	45.00	20.00	18.83	42.83	35.00	CH-U-3"	12.00	7.00	19,553	4
19	FSTM-20000-20-50-20	20.00	50.00	20.00	18.67	47.83	25.00	CH-U-3"	12.00	7.00	15,949	4
20	FSTM-20000-25-50-20	25.00	50.00	20.00	18.67	47.83	30.00	CH-U-3"	12.00	7.00	17,788	4
21	FSTM-20000-30-50-20	30.00	50.00	20.00	18.67	47.83	35.00	CH-U-3"	12.00	7.00	20,540	4

ADDTL. CELL LENGTH

ADDTL. LGTH (FT)	ADDTL. WT. (LBS)	ADDTL. COL'S. (EA)
20.00	5,647	2
25.00	6,919	2
30.00	8,589	2
20.00	5,805	2
25.00	7,391	2
30.00	8,747	2
20.00	6,298	2
25.00	7,675	2
30.00	9,030	2
20.00	6,498	2
25.00	7,874	2
30.00	9,293	2
20.00	6,802	2
25.00	8,179	2
30.00	10,164	2
20.00	7,149	2
25.00	8,525	2
30.00	10,511	2
20.00	7,642	2
25.00	9,019	2
30.00	11,004	2