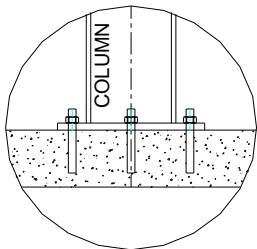
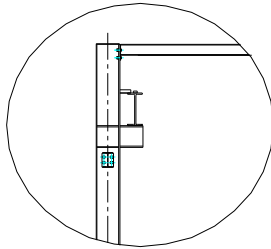


42827 Irwin Drive  
 Harrison Twp. MI 48045 USA  
 P/ 586-468-0909 F/ 586-468-2711  
 E/ info@mccrane.com W/ mccrane.com

## DIMENSIONS & WEIGHTS - TYPE FSTM-15000 7.5-TON CAPACITY FREE STANDING RUNWAY STRUCTURE FOR MOTORIZED CRANE - 20FT TOS



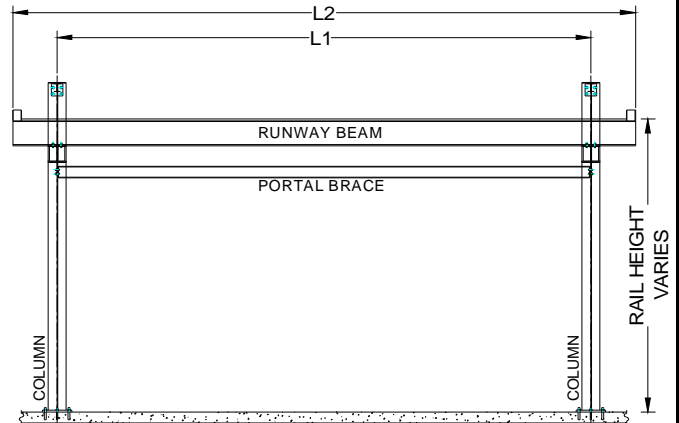
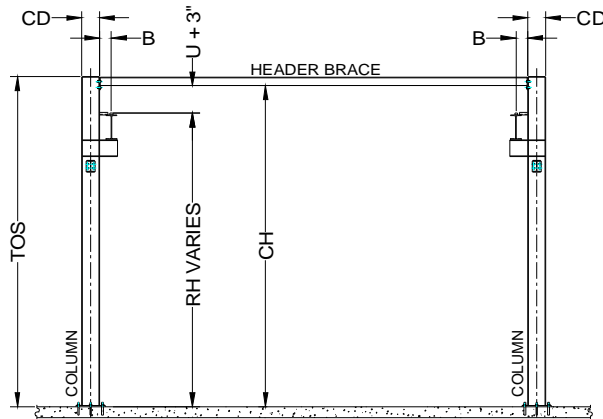
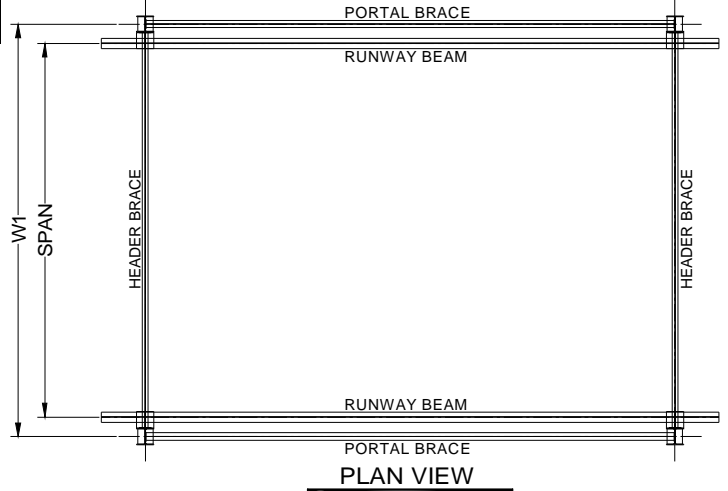
**BASE DETAIL**



**BEAM/COL. DETAIL**

**GENERAL NOTES:**

- Runway rail is rectangular square bar welded to runway beam.  
Additional field welding is required at splice joints that overlap beam splices.
- Capacities shown are for One (1) Crane at rated capacity.
- Runway designed for MCC standard crane types: TRSGCH, TRSGWR, TRSGWD, or TRSGWS.  
Special or customer supplied cranes require review of structure for specific crane design
- For non-standard lengths, widths, or heights; use next larger structure and order with exact dimensions required.
- Structure kit includes: ACAD system installation drawing specific for order, all structural steel work per attached concept drawing, bolting hardware, anchoring hardware for 8" minimum floor thickness, and gray primer paint finish.
- Structure deflection is approximately 1/2" maximum in all directions. Please contact MCC if additional deflection control is required.
- Runway rail height "RH" is calculated for each structure for specific crane to be used.  
Formula: Rail Height RH = Clear Height (CH) - Crane Height (U)-3" clearance
- Minimum 8" reinforced concrete (min.4000psi) floor required for all structures.
- Base runway cell is a braced cell. Additional cells can be unbraced cell up to (3). Every fourth cell must be a braced cell.



**7.5-TON CAPACITY / 20 FT (TOS) SYSTEM HEIGHT**

ITEM #	SYSTEM I.D. NUMBER	LENGTH L1 (FT)	WIDTH W1 (FT)	HEIGHT TOS (FT)	HEIGHT CH (FT)	SPAN (FT)	LENGTH L2 (FT)	HEIGHT RH (FT)	WIDTH CD (IN)	WIDTH B (IN)	SYSTEM WT. (LBS)	# COL'S. TOTAL
1	FSTM-15000-20-20-20	20.00	20.00	20.00	19.50	18.00	25.00	CH-U-3"	12.00	6.00	10,247	4
2	FSTM-15000-25-20-20	25.00	20.00	20.00	19.50	18.00	30.00	CH-U-3"	12.00	6.00	11,886	4
3	FSTM-15000-30-20-20	30.00	20.00	20.00	19.50	18.00	35.00	CH-U-3"	12.00	6.00	14,124	4
4	FSTM-15000-20-25-20	20.00	25.00	25.00	19.33	23.00	25.00	CH-U-3"	12.00	6.00	10,562	4
5	FSTM-15000-25-25-20	25.00	25.00	25.00	19.33	23.00	30.00	CH-U-3"	12.00	6.00	12,201	4
6	FSTM-15000-30-25-20	30.00	25.00	25.00	19.33	23.00	35.00	CH-U-3"	12.00	6.00	14,439	4
7	FSTM-15000-20-30-20	20.00	30.00	20.00	19.33	28.00	25.00	CH-U-3"	12.00	6.00	11,287	4
8	FSTM-15000-25-30-20	25.00	30.00	30.00	19.33	28.00	30.00	CH-U-3"	12.00	6.00	13,272	4
9	FSTM-15000-30-30-20	30.00	30.00	20.00	19.33	28.00	35.00	CH-U-3"	12.00	6.00	15,006	4
10	FSTM-15000-20-35-20	20.00	35.00	35.00	19.17	33.00	25.00	CH-U-3"	12.00	6.00	11,686	4
11	FSTM-15000-25-35-20	25.00	35.00	20.00	19.17	33.00	30.00	CH-U-3"	12.00	6.00	13,671	4
12	FSTM-15000-30-35-20	30.00	35.00	35.00	19.17	33.00	35.00	CH-U-3"	12.00	6.00	15,405	4
13	FSTM-15000-20-40-20	20.00	40.00	20.00	19.00	38.00	25.00	CH-U-3"	12.00	6.00	12,295	4
14	FSTM-15000-25-40-20	25.00	40.00	40.00	19.00	38.00	30.00	CH-U-3"	12.00	6.00	14,280	4
15	FSTM-15000-30-40-20	30.00	40.00	20.00	19.00	38.00	35.00	CH-U-3"	12.00	6.00	16,014	4
16	FSTM-15000-20-45-20	20.00	45.00	45.00	18.83	43.00	25.00	CH-U-3"	12.00	6.00	13,250	4
17	FSTM-15000-25-45-20	25.00	45.00	20.00	18.83	43.00	30.00	CH-U-3"	12.00	6.00	14,973	4
18	FSTM-15000-30-45-20	30.00	45.00	45.00	18.83	43.00	35.00	CH-U-3"	12.00	6.00	17,368	4
19	FSTM-15000-20-50-20	20.00	50.00	20.00	18.67	48.00	25.00	CH-U-3"	12.00	6.00	14,237	4
20	FSTM-15000-25-50-20	25.00	50.00	50.00	18.67	48.00	30.00	CH-U-3"	12.00	6.00	15,960	4
21	FSTM-15000-30-50-20	30.00	50.00	20.00	18.67	48.00	35.00	CH-U-3"	12.00	6.00	18,355	4

**ADDTL. CELL LENGTH**

ADDTL. LGTH (FT)	ADDTL. WT. (LBS)	ADDTL. COL'S. (EA)
20.00	5,070	2
25.00	6,257	2
30.00	7,781	2
20.00	5,227	2
25.00	6,415	2
30.00	7,938	2
20.00	5,637	2
25.00	7,118	2
30.00	8,222	2
20.00	5,836	2
25.00	7,318	2
30.00	8,421	2
20.00	6,141	2
25.00	7,622	2
30.00	8,726	2
20.00	6,697	2
25.00	7,969	2
30.00	9,639	2
20.00	7,191	2
25.00	8,462	2
30.00	10,133	2