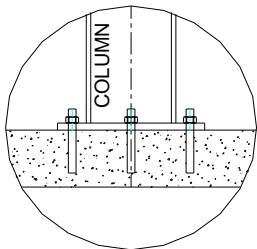
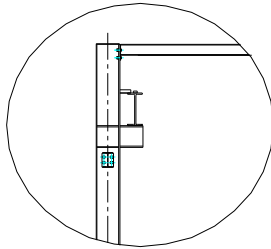


42827 Irwin Drive
 Harrison Twp. MI 48045 USA
 P/ 586-468-0909 F/ 586-468-2711
 E/ info@mccrane.com W/ mccrane.com

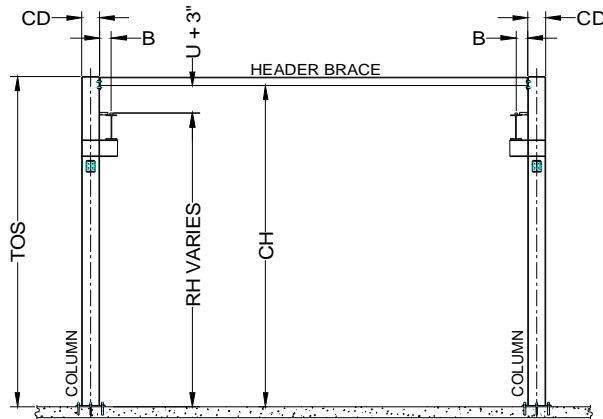
DIMENSIONS & WEIGHTS - TYPE FSTM-10000 5-TON CAPACITY FREE STANDING RUNWAY STRUCTURE FOR MOTORIZED CRANE - 20FT TOS



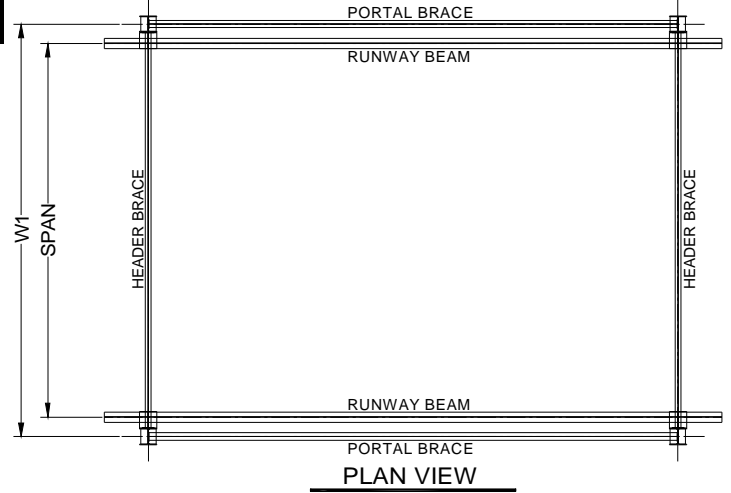
BASE DETAIL



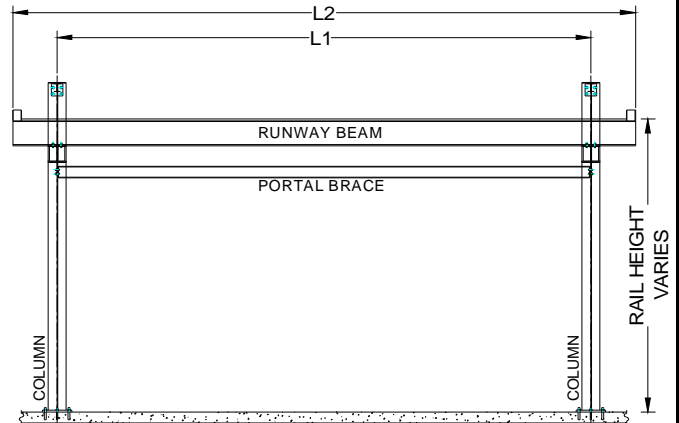
BEAM/COL. DETAIL



END VIEW



PLAN VIEW



LONGITUDINAL VIEW

GENERAL NOTES:

- Runway rail is rectangular square bar welded to runway beam.
Additional field welding is required at splice joints that overlap beam splices.
- Capacities shown are for One (1) Crane at rated capacity.
- Runway designed for MCC standard crane types: TRSGCH, TRSGWR, TRSGWD, or TRSGWS.
Special or customer supplied cranes require review of structure for specific crane design
- For non-standard lengths, widths, or heights; use next larger structure and order with exact dimensions required.
- Structure kit includes: ACAD system installation drawing specific for order, all structural steel work per attached concept drawing, bolting hardware, anchoring hardware for 8" minimum floor thickness, and gray primer paint finish.
- Structure deflection is approximately 1/2" maximum in all directions. Please contact MCC if additional deflection control is required.
- Runway rail height "RH" is calculated for each structure for specific crane to be used.
Formula: Rail Height RH = Clear Height (CH) - Crane Height (U)-3" clearance
- Minimum 8" reinforced concrete (min.4000psi) floor required for all structures.
- Base runway cell is a braced cell. Additional cells can be unbraced cell up to (3). Every fourth cell must be a braced cell.

5-TON CAPACITY / 20 FT (TOS) SYSTEM HEIGHT

ITEM #	SYSTEM I.D. NUMBER	LENGTH L1 (FT)	WIDTH W1 (FT)	HEIGHT TOS (FT)	HEIGHT CH (FT)	SPAN (FT)	LENGTH L2 (FT)	HEIGHT RH (FT)	WIDTH CD (IN)	WIDTH B (IN)	SYSTEM WT. (LBS)	# COL'S. TOTAL
1	FSTM-10000-20-20-20	20.00	20.00	20.00	19.50	17.67	25.00	CH-U-3"	12.00	8.00	9,953	4
2	FSTM-10000-25-20-20	25.00	20.00	20.00	19.50	17.67	30.00	CH-U-3"	12.00	8.00	11,235	4
3	FSTM-10000-30-20-20	30.00	20.00	20.00	19.50	17.67	35.00	CH-U-3"	12.00	8.00	13,304	4
4	FSTM-10000-20-25-20	20.00	25.00	20.00	19.33	22.67	25.00	CH-U-3"	12.00	8.00	10,237	4
5	FSTM-10000-25-25-20	25.00	25.00	20.00	19.33	22.67	30.00	CH-U-3"	12.00	8.00	11,518	4
6	FSTM-10000-30-25-20	30.00	25.00	20.00	19.33	22.67	35.00	CH-U-3"	12.00	8.00	13,587	4
7	FSTM-10000-20-30-20	20.00	30.00	20.00	19.33	27.67	25.00	CH-U-3"	12.00	8.00	10,772	4
8	FSTM-10000-25-30-20	25.00	30.00	20.00	19.33	27.67	30.00	CH-U-3"	12.00	8.00	12,054	4
9	FSTM-10000-30-30-20	30.00	30.00	20.00	19.33	27.67	35.00	CH-U-3"	12.00	8.00	14,123	4
10	FSTM-10000-20-35-20	20.00	35.00	20.00	19.17	32.67	25.00	CH-U-3"	12.00	8.00	11,066	4
11	FSTM-10000-25-35-20	25.00	35.00	20.00	19.17	32.67	30.00	CH-U-3"	12.00	8.00	12,348	4
12	FSTM-10000-30-35-20	30.00	35.00	20.00	19.17	32.67	35.00	CH-U-3"	12.00	8.00	14,417	4
13	FSTM-10000-20-40-20	20.00	40.00	20.00	19.00	37.67	25.00	CH-U-3"	12.00	8.00	11,633	4
14	FSTM-10000-25-40-20	25.00	40.00	20.00	19.00	37.67	30.00	CH-U-3"	12.00	8.00	12,915	4
15	FSTM-10000-30-40-20	30.00	40.00	20.00	19.00	37.67	35.00	CH-U-3"	12.00	8.00	14,984	4
16	FSTM-10000-20-45-20	20.00	45.00	20.00	18.83	42.67	25.00	CH-U-3"	12.00	8.00	12,284	4
17	FSTM-10000-25-45-20	25.00	45.00	20.00	18.83	42.67	30.00	CH-U-3"	12.00	8.00	13,566	4
18	FSTM-10000-30-45-20	30.00	45.00	20.00	18.83	42.67	35.00	CH-U-3"	12.00	8.00	16,076	4
19	FSTM-10000-20-50-20	20.00	50.00	20.00	18.67	47.67	25.00	CH-U-3"	12.00	8.00	13,229	4
20	FSTM-10000-25-50-20	25.00	50.00	20.00	18.67	47.67	30.00	CH-U-3"	12.00	8.00	14,511	4
21	FSTM-10000-30-50-20	30.00	50.00	20.00	18.67	47.67	35.00	CH-U-3"	12.00	8.00	17,021	4

ADDTL. CELL LENGTH

ADDTL. LGTH (FT)	ADDTL. WT. (LBS)	ADDTL. COL'S. (EA)
20.00	4,256	2
25.00	5,170	2
30.00	6,567	2
20.00	4,398	2
25.00	5,312	2
30.00	6,709	2
20.00	4,665	2
25.00	5,579	2
30.00	6,976	2
20.00	4,812	2
25.00	5,726	2
30.00	7,123	2
20.00	5,096	2
25.00	6,010	2
30.00	7,407	2
20.00	5,421	2
25.00	6,335	2
30.00	8,110	2
20.00	5,894	2
25.00	6,808	2
30.00	8,583	2